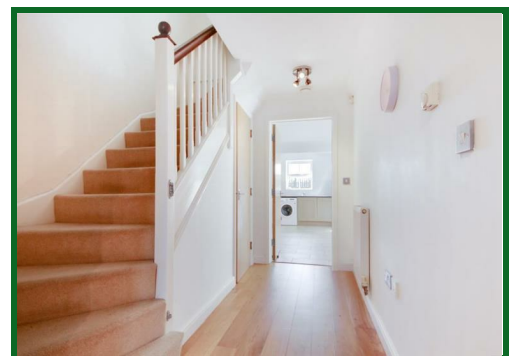
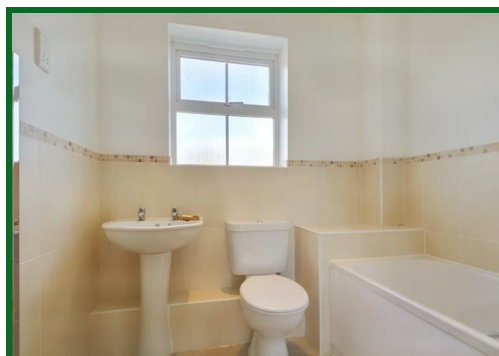




12 Hadleigh Close, Shenley
Hertfordshire WD7 9LT
£2,500 Per Month

Offered for rent and available during September is this well maintained and spacious three bedroom town house located in a popular close on the borders of Radlett and Shenley within the catchment area of Clore Shalom School. . The property features generous living accommodation comprising three bedrooms, three bathrooms, downstairs cloakroom, large kitchen diner and living room as well as integral garage. The property is offered in excellent decorative order and viewing is highly recommended.



Entrance Hall

Downstairs WC

Kitchen Diner

16'11 x 16'8 at max points (5.16m x 5.08m at max points)

Landing

Reception

16'11 x 11'1 (5.16m x 3.38m)

Bedroom Two

13'7 into wardrobes x 9'8 (4.14m into wardrobes x 2.95m)

En-Suite Shower Room

Landing

Bedroom Three

16'11 into wardrobes x 11'7 (5.16m into wardrobes x 3.53m)

Master Bedroom

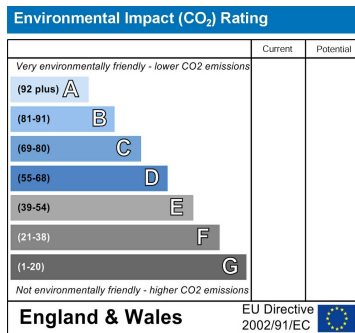
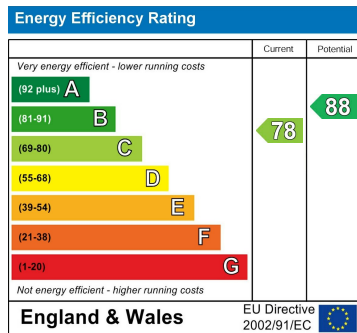
16'11 x 12'7 (5.16m x 3.84m)

En-Suite Shower Room

Rear Garden

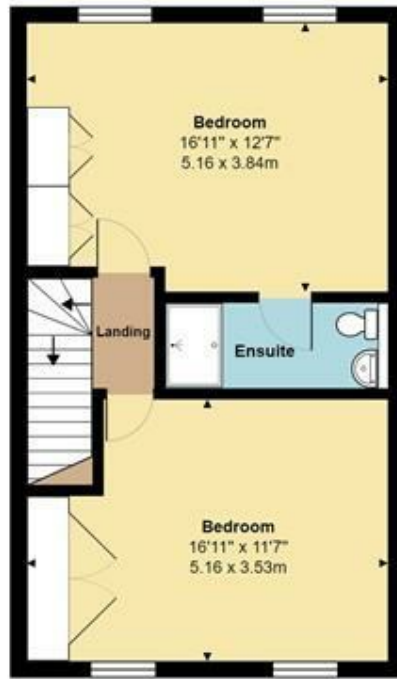
Garage & Driveway

18' x 8'10 (5.49m x 2.69m)



20 Andrew Close, Shenley | Herts WD7 9LP
 Tel: 01923 856464 | Email: info@shenleyestates.com





Second Floor
Area: 507 ft² ... 47.1 m²



Ground Floor
Area: 549 ft² ... 51.0 m²

First Floor
Area: 507 ft² ... 47.1 m²

Total Area: 1562 ft² ... 145.1 m²

All measurements are approximate and for display purposes only

