



**9 Charwood Close, Shenley
Hertfordshire WD7 9LH
Guide Price £940,000**

****CHAIN FREE**** Located at the TOP END of Porters Park in a premier close is this STUNNING four bedroom detached house. Offered in superb decorative order, the property has been maintained to a high standard and offers spacious living accommodation comprising four bedrooms (three doubles and a large single currently used as a dressing room), two bathrooms (including one ensuite shower room) done to a high spec, downstairs WC, fully fitted kitchen, separate utility room, open plan hall and living room, further living room with feature sun room (currently used as dining room) and study there are four different reception 'areas'.

The property also benefits from a landscaped rear garden and block paved driveway for at least two cars and is offered CHAIN FREE.

Immediate viewing is essential to fully appreciate this stunning home.

EPC Rating Band C.



Entrance Hall

Study

8'10 x 7'10 (2.69m x 2.39m)

Reception

17'4 x 9'8 (5.28m x 2.95m)

Kitchen Breakfast Room

14'11 x 9'8 (4.55m x 2.95m)

Utility

Lounge

15' x 11'11 (4.57m x 3.63m)

Conservatory

13'10 x 9'11 (4.22m x 3.02m)

Landing

Master Bedroom

14'4 x 12'11 at max points (4.37m x 3.94m at max points)

En-Suite Shower Room

Bedroom Two

13'10 into wardrobes x 9'1 (4.22m into wardrobes x 2.77m)

Bedroom Three

11'3 x 9'1 (3.43m x 2.77m)

Bedroom Four

8'9 x 7'7 (2.67m x 2.31m)

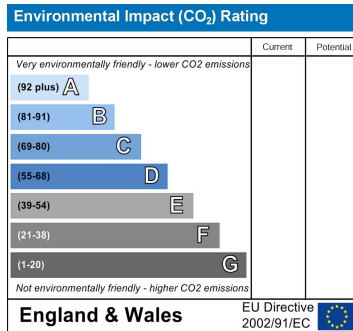
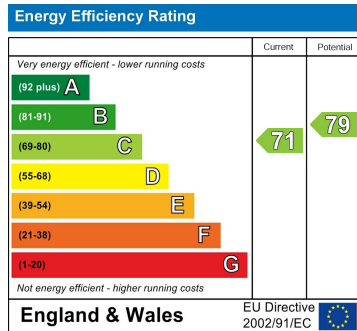
Currently used as a dressing room.

Family Bathroom

Rear Garden

Parking

Driveway for 2 cars in front of the property

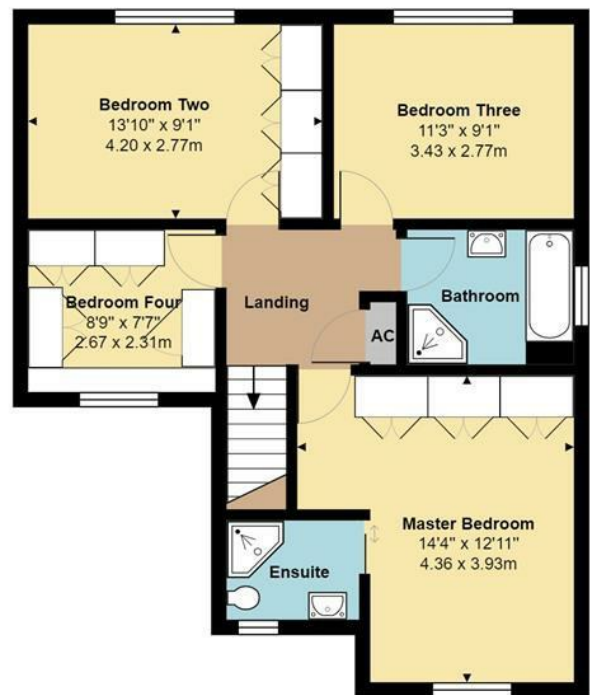




'Your home is our business'



Ground Floor
Area: 906 ft² ... 84.2 m²



First Floor
Area: 641 ft² ... 59.5 m²

Total Area: 1547 ft² ... 143.7 m²
All measurements are approximate and for display purposes only



20 Andrew Close, Shenley | Herts WD7 9LP
Tel: 01923 856464 | Email: info@shenleyestates.com

