



Temple Walk | Whitkirk | LS15 7SG

£350,000

Four bedroom semi-detached house | Council Tax Band C | EPC rating TBC

Emsleys | estate agents

*** FOUR BEDROOM WITH MASTER EN-SUITE AND A FABULOUS OPEN-PLAN DINING/KITCHEN ***

A rare opportunity to acquire this immaculate semi-detached property in a sought-after location. This stunning home boasts four bedrooms, including a spacious master bedroom with an en-suite bathroom, offering an abundance of natural light throughout.

Upon entering, you are greeted by a warm and inviting atmosphere, with two reception rooms ideal for entertaining guests or simply relaxing by the fireplace while enjoying views of the well-maintained garden. The open-plan kitchen is a true focal point, featuring modern appliances and a designated dining space, perfect for family meals or hosting dinner parties. Outside there is ample parking and a brick-built garage.

The property's impeccable condition is evident in every detail, making it a truly desirable home for those seeking comfort and style. With ample space for a growing family, this residence offers a harmonious blend of practicality and elegance.

Ground Floor

Entrance Hall

Enter through a PVCu double-glazed entrance door, with a central heating radiator and a staircase rising to the first floor.

Living Room 3.51m x 3.51m (11'6" x 11'6")

A warm and inviting room with a large bay window and a traditional fireplace.

Kitchen/Dining Room 5.41m x 5.26m (17'9" x 17'3")

A fabulous open-plan family room with a good range of wall and base units, integrated oven and hob, fridge, freezer and a dishwasher. Ample work surfaces incorporating a stainless steel sink and side drainer. The room is zoned into living, dining and kitchen space and has French doors to the rear garden, 'Velux' windows and ample space for a family dining table and chairs.

First Floor

Landing

Access to the first floor rooms and staircase rising to the second floor. Window to the side elevation.

Bedroom 2 3.41m x 3.44m (11'2" x 11'3")

A double bedroom with a large bay window, central heating radiator and fitted wardrobes to the chimney recesses.

Bedroom 3 2.99m x 3.24m (9'10" x 10'8")

A double bedroom with a central heating radiator and a window overlooking the rear garden.

Bedroom 4 2.14m x 1.72m (7'0" x 5'8")

A single bedroom placed to the front and currently used as an office, with a window and a central heating radiator.

Bathroom

Fully tiled with modern ceramics and fitted with a white three piece suite comprising; panelled bath with shower and screen over, a concealed cistern 'back to wall' w.c and a wall hung hand wash basin. Window to the rear elevation and a heated towel rail.

Second Floor

Master Bedroom 4.79m x 3.22m (15'9" x 10'7")

A large double bedroom with two 'Velux' windows to the front and a large dormer window overlooking the rear. Fitted wardrobes to one wall, useful under eaves storage and a central heating radiator.

En-suite Shower Room

Modern and beautifully done. The en-suite offers a large shower enclosure with a 'rainfall' shower, wall mounted hand wash basin and a concealed cistern 'back to wall' w.c. Double-glazed window and a heated towel rail.

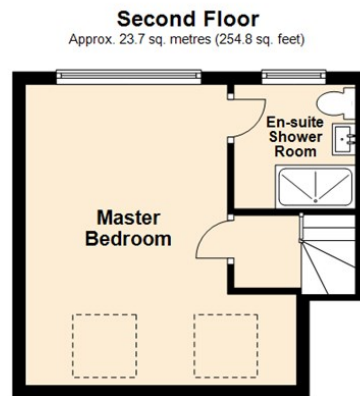
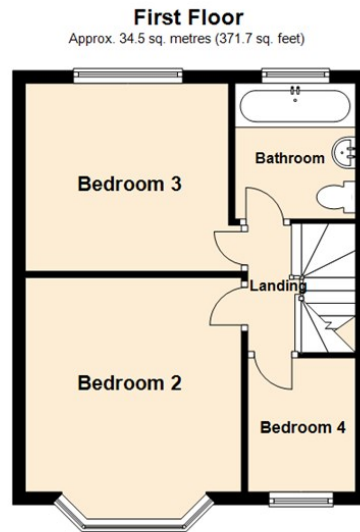
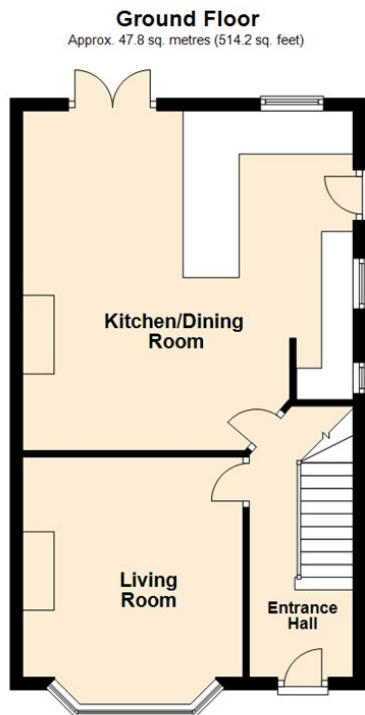
Exterior

Access the property to the side where there is ample off-road parking in front of the brick-built garage which has an up-and-over door, power and light. Being a corner plot the property offers extensive an lawn with a border hedge to the front. A gate to the side encloses the rest of the grounds and leads to the rear garden where there is a raised deck and lawn.

Directions

Leave Crossgates on Austhorpe Road, turning left at the traffic lights on to Station Road. Proceed straight on to the Colton Village roundabout and then take the third exit on to the A63 Selby Road. Continue along where the property can then be found on the right hand side identified by the Emsleys for sale board.





Total area: approx. 106.0 sq. metres (1140.7 sq. feet)

These details are for guidance only and complete accuracy cannot be guaranteed. If there is any point, which is of particular importance, verification should be obtained. They do not constitute a contract or part of a contract. All measurements are approximate. No guarantee can be given with regard to planning permissions or fitness for purpose. No apparatus, equipment, fixture or fitting has been tested. Items shown in photographs are NOT necessarily included. Interested Parties are advised to check availability and make an appointment to view before travelling to see a property.



35 Austhorpe Road | Crossgates | Leeds | LS15 8BA
t: 0113 284 0120 | www.emsleysestateagents.co.uk

Emsleys | estate agents