



Castle Lodge Garth | Rothwell | LS26 0ZE

£525,000

Four bedroom detached | Council Tax Band F | EPC Rating TBC

**Emsleys** | estate agents



\*\*\*RARE OPPORTUNITY. ONLY A HANDFUL OF THIS PROPERTY TYPE BUILT. STUNNING THROUGHOUT.\*\*\*

Nestled away in the small cul de sac is this stunning detached home with the last one its type selling for in excess of £500k around 4 years ago. Offering a perfect blend of modern living and spacious comfort. With four well-proportioned bedrooms, this property is ideal for families seeking both space and style. The house boasts two inviting reception rooms, providing ample opportunity for relaxation/study and entertaining guests.

The heart of the home is undoubtedly the open plan kitchen, dining, and family room, which creates a warm and welcoming atmosphere for family gatherings and social occasions. The contemporary design is complemented by high-quality finishes, ensuring a stylish yet functional space for everyday living, with the added benefit of a utility room and WC to the ground floor.

With three bathrooms, including en-suite facilities incorporating a Jack and Jill set up, this property caters to the needs of a busy household, providing convenience and privacy for all family members. The double garage with part summer house conversion offers secure parking and additional storage, while the generous parking space for up to six vehicles ensures that you and your guests will never be short of room.

The outdoor space is equally impressive, featuring a delightful summer house converted from one of the garages that can serve as a tranquil retreat or a versatile space for hobbies and leisure activities. The well-maintained garden provides a perfect backdrop for outdoor entertaining or simply enjoying the fresh air.

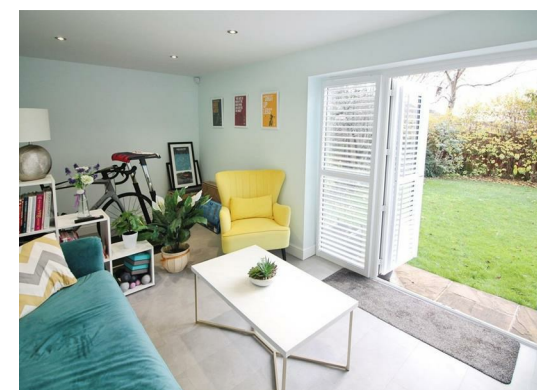
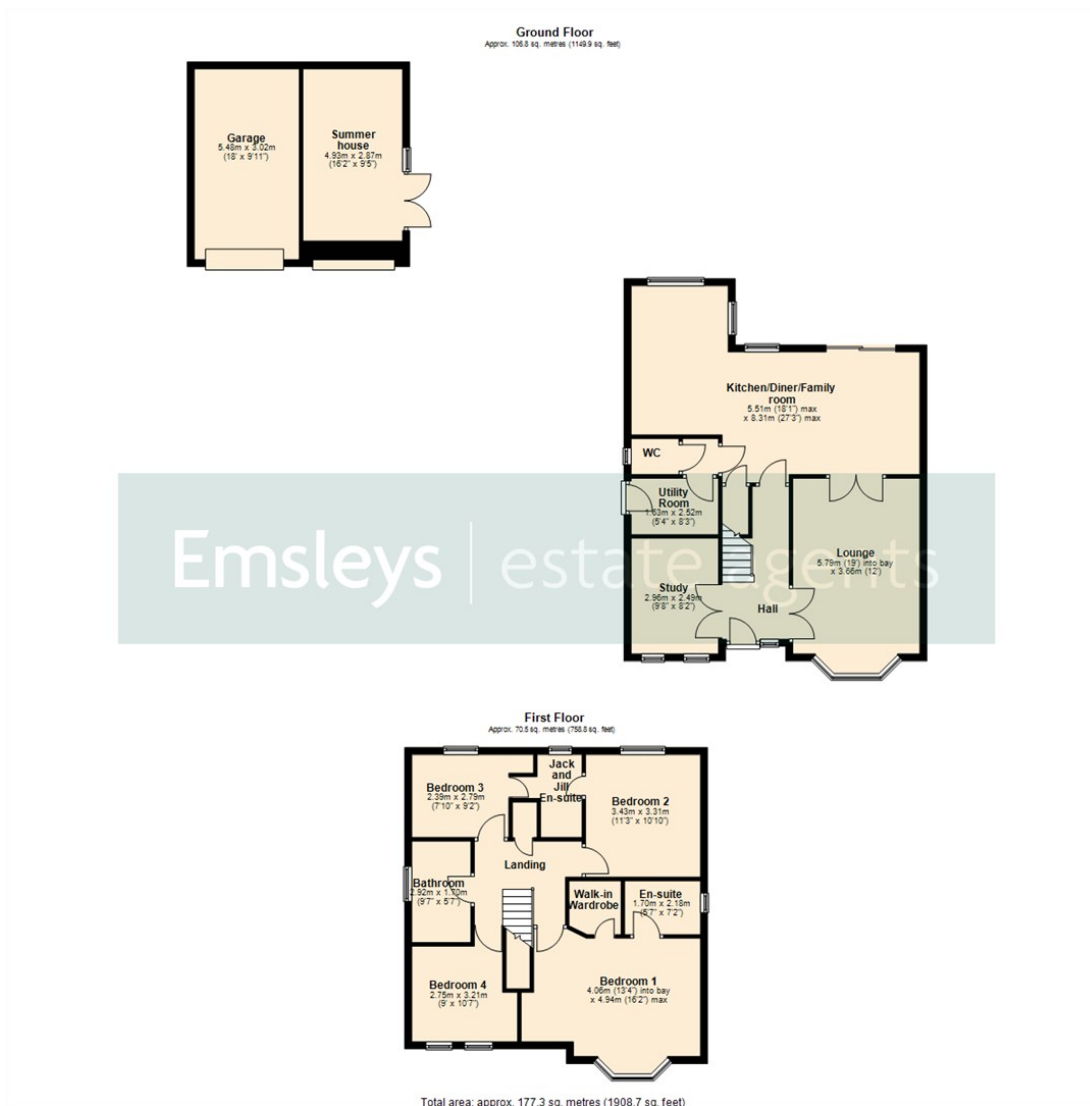
This exceptional property in Rothwell is not just a house; it is a home that promises comfort, style, and a wonderful lifestyle. With its modern amenities and spacious layout, it is a must-see for anyone looking to settle in this desirable area.











These details are for guidance only and complete accuracy cannot be guaranteed. If there is any point, which is of particular importance, verification should be obtained. They do not constitute a contract or part of a contract. All measurements are approximate. No guarantee can be given with regard to planning permissions or fitness for purpose. No apparatus, equipment, fixture or fitting has been tested. Items shown in photographs are NOT necessarily included. Interested Parties are advised to check availability and make an appointment to view before travelling to see a property.

65 Commercial Street | Rothwell | Leeds | LS26 0QD  
t: 0113 201 4040    [www.emsleysestateagents.co.uk](http://www.emsleysestateagents.co.uk)

**Emsleys** | estate agents