



Grosvenor Road, Fairfield, Stockton-On-Tees, TS19 7AF

Nestled in one of Fairfield's most coveted roads, this splendid semi detached residence presents an opportunity for those seeking a spacious family home. Perfectly situated within a short stroll to Ian Ramsey Secondary School and Hartburn Primary School, this property boasts an ideal setting for growing families.

The generously proportioned interior comprises a welcoming hallway, two reception rooms with feature period style fireplaces, and a modern kitchen featuring a Range Cooker and integrated dishwasher. The garage has been cleverly converted into a convenient ground floor shower room whilst retaining a large storage area. A delightful addition is the sizeable garden room, offering picturesque views across the rear garden. A side extension with access from the front and rear provides additional storage but also presents an opportunity for further development.

Upstairs provides three bedrooms, with two featuring built-in wardrobes. The modern family bathroom is fitted with a contemporary suite complete with a separate shower cubicle and bath.

Nestled at the cul-de-sac's head, the property comes with driveway parking for two vehicles. The expansive WESTERLY facing garden at the rear ensures both space and privacy.

Offered for sale with the benefit of NO CHAIN !

Asking Price £299,000



Grosvenor Road, Fairfield, Stockton-On-Tees,

HALL

SHOWER ROOM

7'9" x 3'10" (2.36m x 1.17m)

LOUNGE

13'4" x 16'7" (4.06m x 5.05m)

SITTING ROOM

13'4" x 15'1" (4.06m x 4.60m)

KITCHEN

15'8" x 8'9" (4.78m x 2.67m)

GARDEN ROOM

16'10" x 11'10" (5.13m x 3.61m)

UTILITY/WC

4'10" x 7" (1.47m x 2.13m)

LANDING

BEDROOM ONE

17'1" x 10'1" (5.21m x 3.07m)

BEDROOM TWO

14'10" x 10'1" (4.52m x 3.07m)

BATHROOM

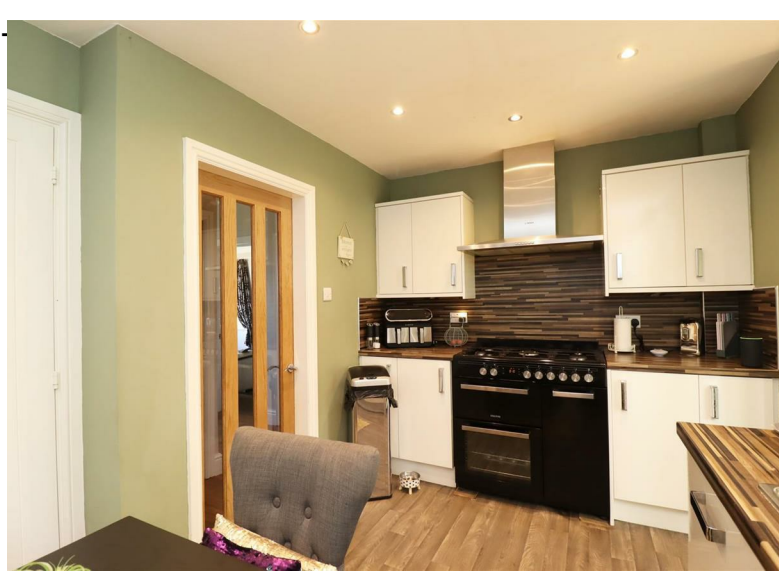
7'10" x 7'8" (2.39m x 2.34m)

BEDROOM THREE

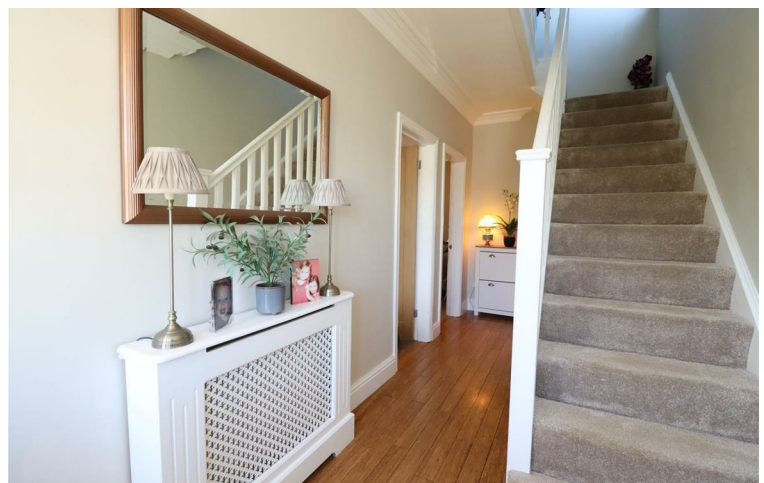
7'11" x 7'8" (2.41m x 2.34m)

AML PROCEDURE

To comply with anti-money laundering regulations (AML) all estate agents must be registered with HMRC. Gowland White complies with this legislation by using an online AML risk assessment company, approved by the UK Government. Please note that all buyers are charged a fee of £36.00 (inc. VAT), for each buyer, to cover this process. These fees are payable before we can progress an agreed sale.

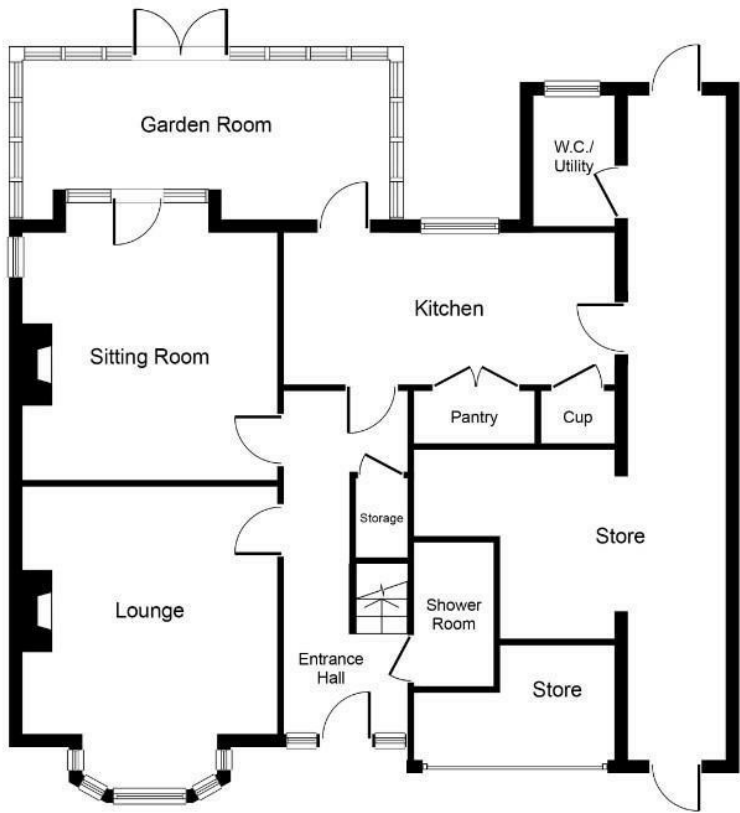
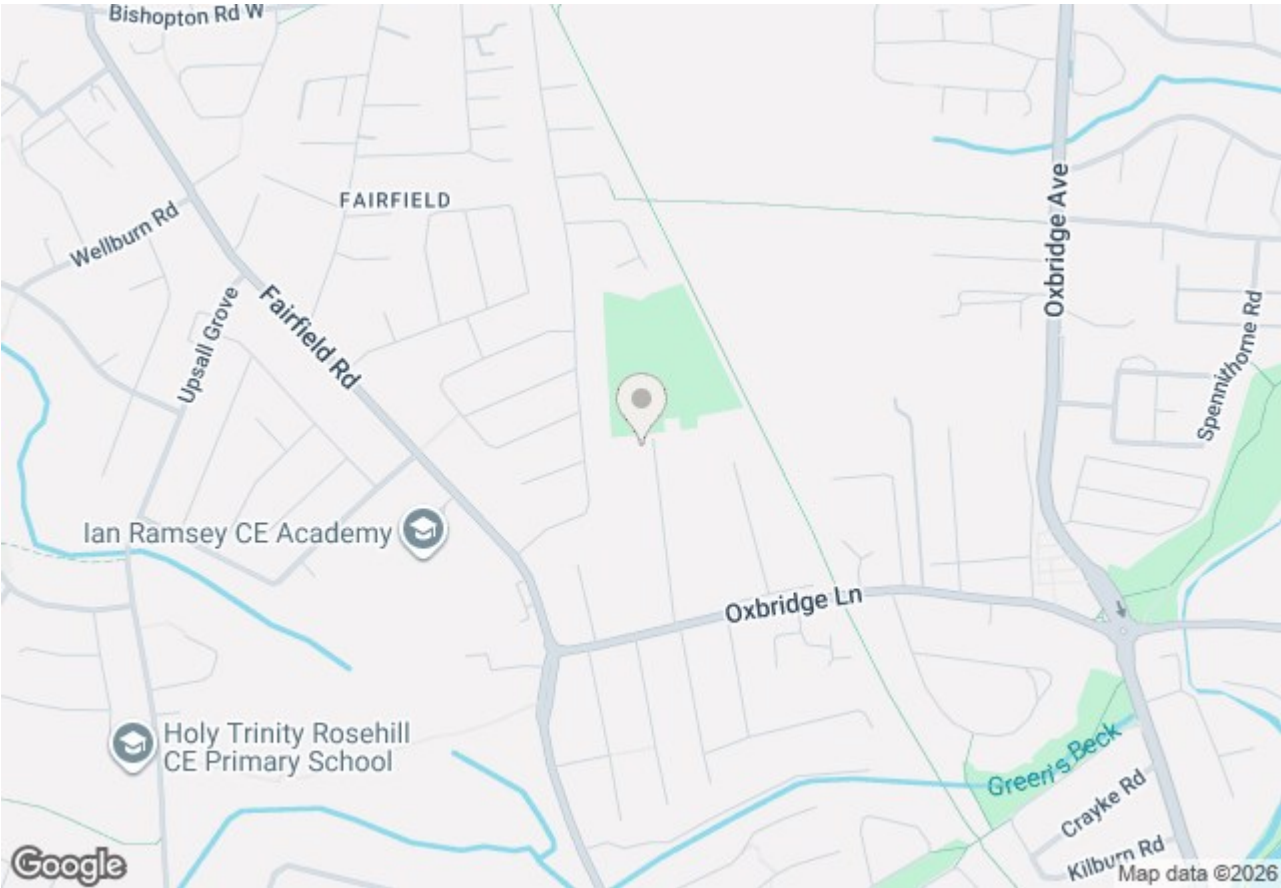


Tel: 01642 615657

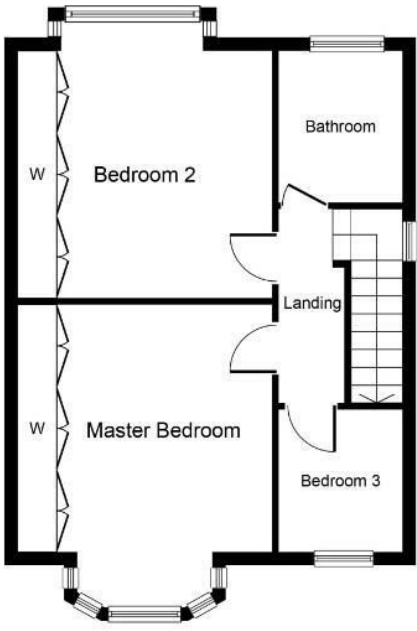




Grosvenor Road, Fairfield, Stockton-On-Tees, TS19



Ground Floor

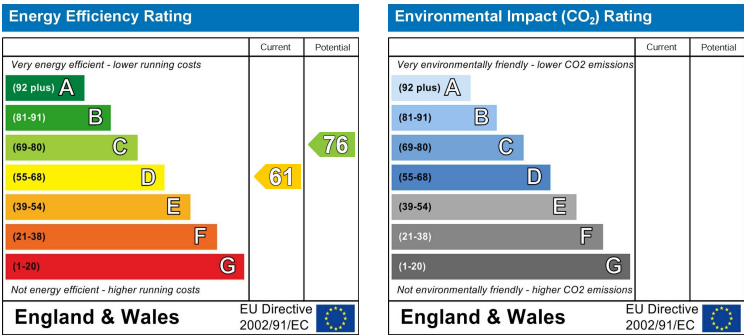


First Floor

Whilst every attempt has been made to ensure the accuracy of the floor plan contained here, measurements of doors, windows, rooms and any other items are approximate and no responsibility is taken for any error, omission, or misstatement. The measurements should not be relied upon for valuation, transaction and/or funding purposes. This plan is for illustrative purposes only and should be used as such by any prospective purchaser or tenant. The services, systems and appliances shown have not been tested and no guarantee as to their operability or efficiency can be given.

Copyright V360 Ltd 2024 | www.houseviz.com

Grosvenor Road, Fairfield, Stockton-On-Tees, TS19



VIEWING

Please contact us on 01642 615657 if you wish to arrange a viewing or would like more information.

These particulars, whilst believed to be accurate are set out as a general outline only for guidance and do not constitute any part of an offer or contract. Intending purchasers should not rely on them as statements of representation of fact, but must satisfy themselves by inspection or otherwise as to their accuracy. No person in this firms employment has the authority to make or give any representation or warranty in respect of the property.