



## Woodborough Lane, Whitehouse Farm, Stockton-On-Tees, TS19

Located in a cul de sac, on the popular residential area of Whitehouse Farm, this well presented DETACHED bungalow has been upgraded throughout and is ready to move into.

The accommodation is warmed by gas central heating, is UPVC double glazed and in brief comprises hallway, lounge with a feature fireplace, kitchen with high gloss units, integrated oven, induction hob and extractor, modern shower room, double bedroom with built in wardrobes and the second double bedroom is currently being used as another sitting room with French doors opening into the rear garden.

The bungalow further benefits from off-street parking on the long driveway and a low maintenance front garden. The rear garden is also low maintenance, decked and gravelled and having access through via French doors to a bar located to the front of the garage.

Woodborough Lane is located within a short walking distance to Sainsburys Supermarket, local primary and secondary schools and bus services to the local area.

£220,000





Woodborough Lane, Whitehouse Farm,  
Stockton-On-Tees, TS19 0QU

HALL

LOUNGE  
16'6" x 12'3" (5.03m x 3.73m)

KITCHEN  
8'11" x 8'5" (2.72m x 2.57m)

INNER HALL

BEDROOM ONE  
11'4" x 10'11" (3.45m x 3.33m)

SHOWER ROOM  
8'6" x 5'6" (2.59m x 1.68m)

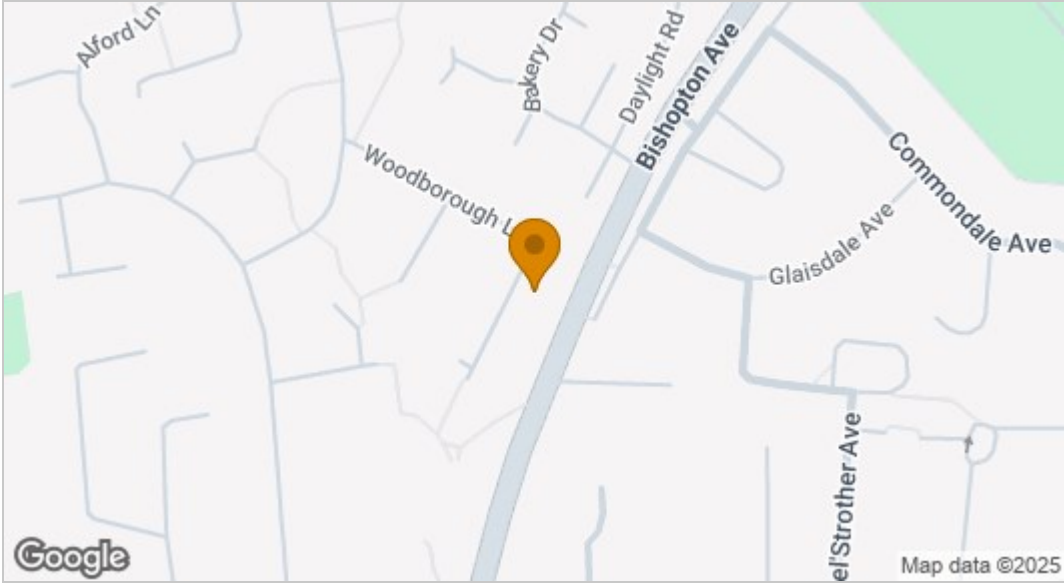
BEDROOM TWO  
9'3" x 13'3" (2.82m x 4.04m)



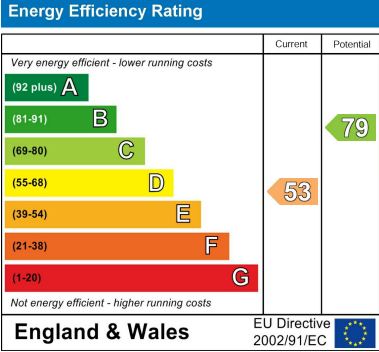




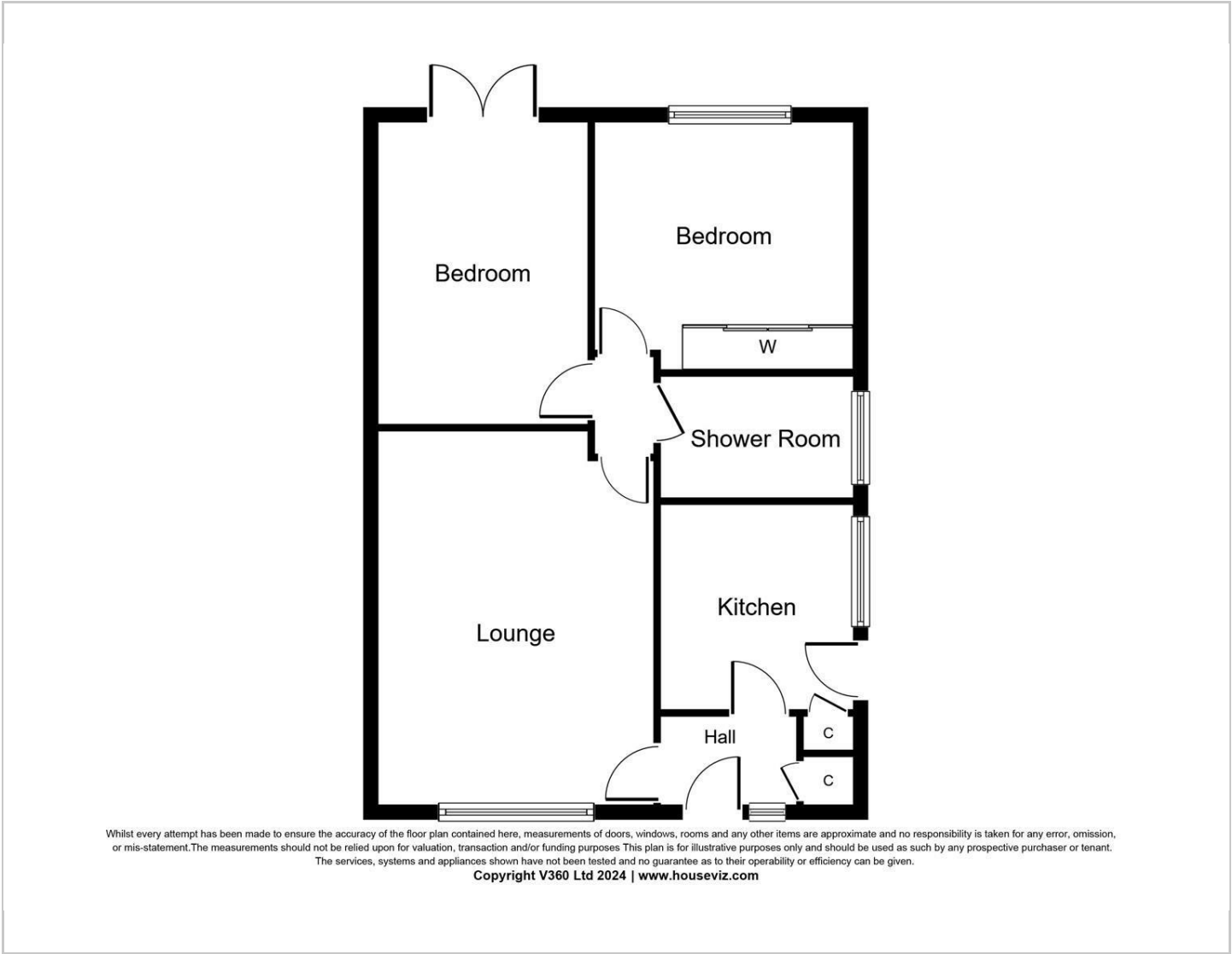
Map



EPC graph



Floor Plan



VIEWING

Please contact us on 01642 615657 if you wish to arrange a viewing or would like more information.

These particulars, whilst believed to be accurate are set out as a general outline only for guidance and do not constitute any part of an offer or contract. Intending purchasers should not rely on them as statements of representation of fact, but must satisfy themselves by inspection or otherwise as to their accuracy. No person in this firms employment has the authority to make or give any representation or warranty in respect of the property.