



## Bakery Drive, Stockton-On-Tees, TS19 0SN

This immaculately presented four bedroom detached home with a double garage occupies a good sized corner plot at the end of a cul-de-sac.

A hallway leads into a spacious lounge with a bay window and feature fireplace, a separate study, and a formal dining room with French doors opening onto the rear garden. The standout feature of the property is the extended kitchen/breakfast room, showcasing elegant tiled flooring, a wide range of high gloss contemporary units, and integrated appliances including a double oven, dishwasher, hob, and microwave. Another set of French doors offers direct access to the garden, while a ground floor W/C adds further convenience.

Upstairs, there are four double bedrooms. The master bedroom includes a bay window and en-suite shower room, while the remaining bedrooms are served by a stylish family bathroom complete with a freestanding bathtub and separate shower.

The property benefits from gas central heating, double glazing, and stylish shutters fitted to many windows.

Outside, a wide driveway leads to a double garage with remote controlled door and a neat lawned front garden. The rear garden is equally well maintained, featuring a lawn, decking area enjoying a sunny aspect, and a paved patio to the side.

Ideal for families and professionals, the home is well placed for access to local amenities including Whitehouse Farm Sainsbury's, sought-after schools and Sixth Form College, Newham Grange Park, and excellent transport links via the A66 and A19.

**£315,000**



4



2



3





Bakery Drive, Stockton-On-Tees, TS19 0SN  
HALL

LOUNGE  
18'1" x 10'8" (5.51m x 3.25m)

KITCHEN/BREAKFAST ROOM  
21'6" x 10'10" (6.55m x 3.30m)

DINING ROOM  
10'8" x 10'1" (3.25m x 3.07m)

STUDY  
10'10" x 7'11" (3.30m x 2.41m)

DOWNSTAIRS WC  
6'4" x 2'8" (1.93m x 0.81m)

LANDING

BEDROOM ONE  
14'11" x 11" (4.55m x 3.35m)

ENSUITE  
5'10" x 5'7" (1.78m x 1.70m)

BEDROOM TWO  
12'5" x 10'8" (3.78m x 3.25m)

BEDROOM THREE  
11'1" x 9'1" (3.38m x 2.77m)

BEDROOM FOUR  
11'1" x 7'4" (3.38m x 2.24m)

BATHROOM  
7'10" x 6'3" (2.39m x 1.91m)

DOUBLE GARAGE  
16'2" x 14'6" (4.93m x 4.42m)

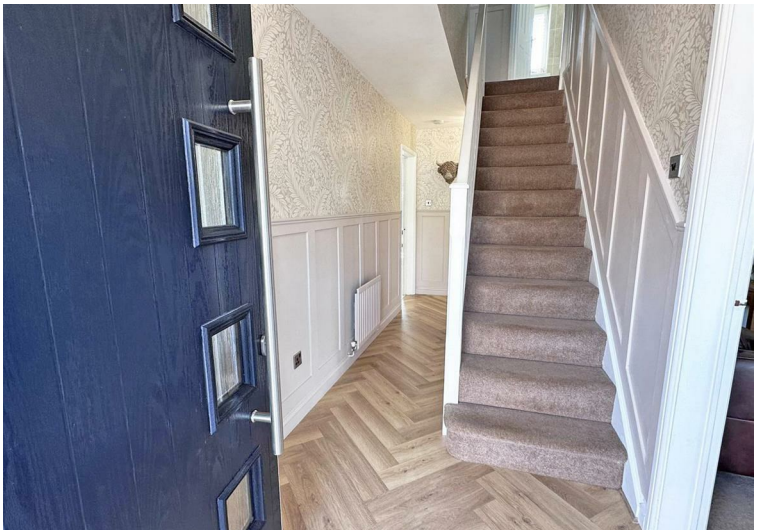
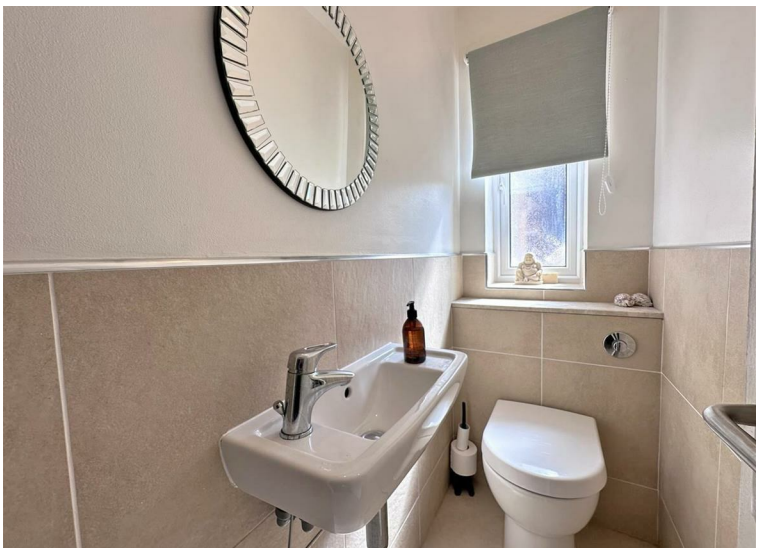
#### AML PROCEDURE

To comply with anti-money laundering regulations (AML) all estate agents must be registered with HMRC. Gowland White complies with this legislation by using an online AML risk assessment company, approved by the UK Government. Please note that all buyers are charged a fee of £36.00 (inc. VAT), for each buyer, to cover this process. These fees are payable before we can progress an agreed sale.

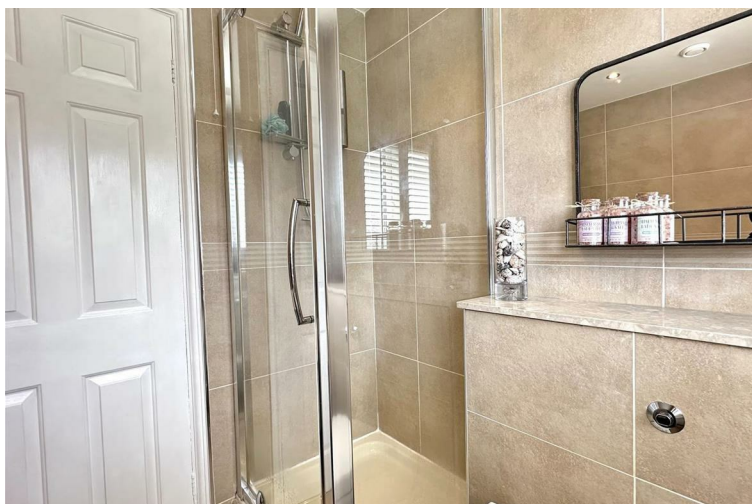


Tel: 01642 615657







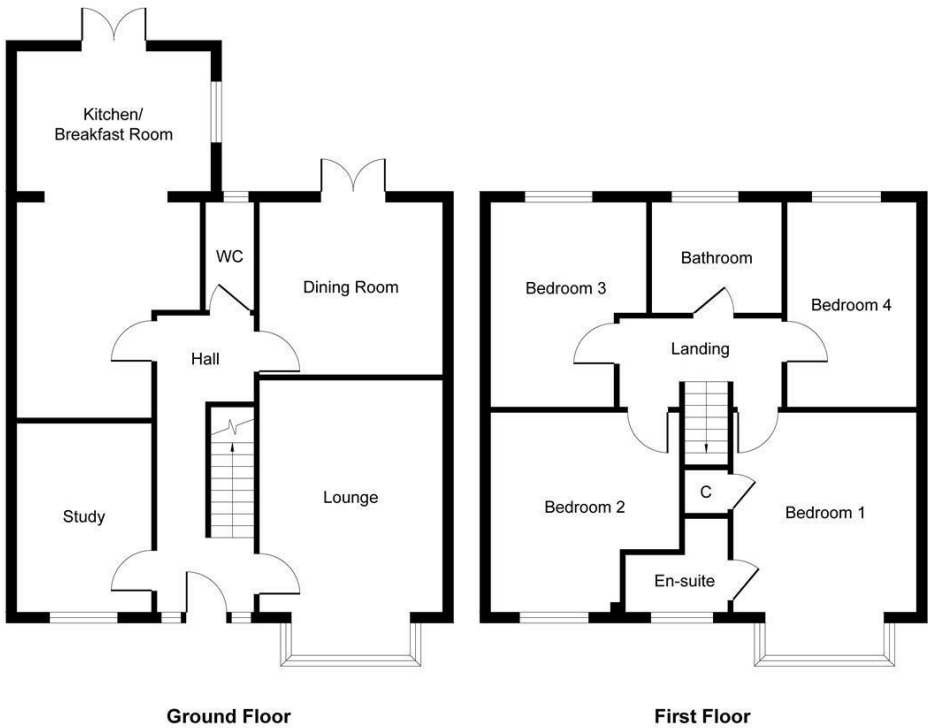




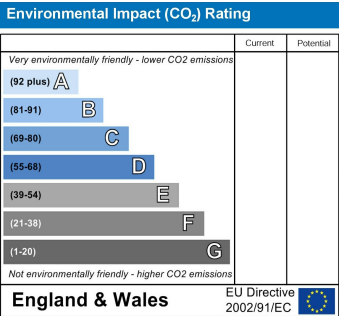
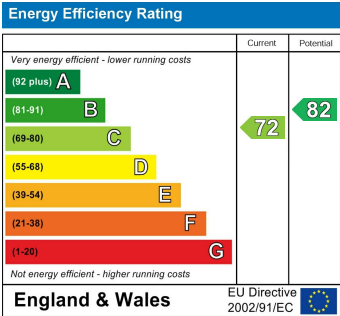
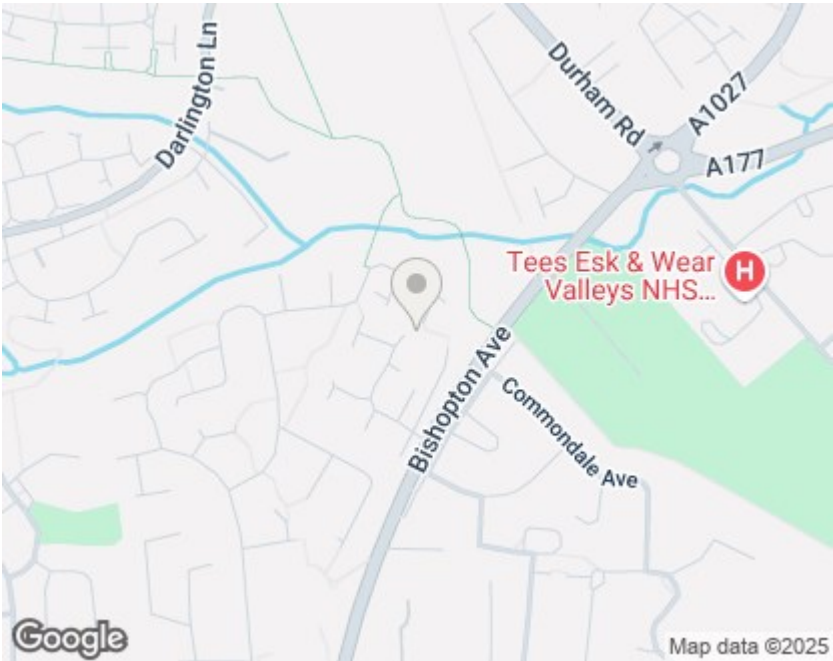




# Bakery Drive, Stockton-On-Tees, TS19 0SN



Whilst every attempt has been made to ensure the accuracy of the floor plan contained here, measurements of doors, windows, rooms and any other items are approximate and no responsibility is taken for any error, omission, or mis-statement. The measurements should not be relied upon for valuation, transaction and/or funding purposes. This plan is for illustrative purposes only and should be used as such by any prospective purchaser or tenant. The services, systems and appliances shown have not been tested and no guarantee as to their operability or efficiency can be given.  
Copyright V360 Ltd 2025 | [www.houseviz.com](http://www.houseviz.com)



**VIEWING**  
Please contact us on 01642 615657 if you wish to arrange a viewing or would like more information.

These particulars, whilst believed to be accurate are set out as a general outline only for guidance and do not constitute any part of an offer or contract. Intending purchasers should not rely on them as statements of representation of fact, but must satisfy themselves by inspection or otherwise as to their accuracy. No person in this firms employment has the authority to make or give any representation or warranty in respect of the property.

17 Bishop Street, Stockton on Tees, TS18 1SY  
[stockton@gowlandwhite.co.uk](mailto:stockton@gowlandwhite.co.uk)