



Greens Grove, Hartburn, Stockton-On-Tees, TS18 5AW

Situated in the highly sought-after area of Hartburn, this larger-than-average four bedroom detached home offers space, versatility, and comfort. Set within a cul-de-sac, the property enjoys a peaceful setting while remaining conveniently close to excellent local amenities, popular schools, transport links, and beautiful green spaces - making it an ideal choice for growing families or anyone looking to upsize.

The ground floor includes a welcoming hallway, a separate dining room, a good-sized lounge with an electric fireplace and French doors leading to a bright conservatory that looks out over the rear garden. The modern high-gloss kitchen is fitted with a range cooker and integrated dishwasher, and leads through to a utility room and downstairs WC. One of the key features of the home is the converted double garage, now functioning as a large family room, offering versatile space for everyday living. Upstairs, you'll find four double bedrooms and a modern family bathroom with both a separate bath and shower.

Outside, the rear garden is a mix of lawn, patio, decking, and a lower-level area with a BBQ space and pond - ideal for summer use. The home is set back with plenty of off-street parking.

£350,000



4



1



2



HALL

KITCHEN/BREAKFAST ROOM
14'10" x 9'1" (4.52m x 2.77m)

DINING ROOM
12'1" x 9'8" (3.68m x 2.95m)

FAMILY ROOM
16'2" x 14'5" (4.93m x 4.39m)

LOUNGE
16'4" x 12'1" (4.98m x 3.68m)

CONSERVATORY
10'9" x 10'4" (3.28m x 3.15m)

UTILITY ROOM
14'8" x 5'10" (4.47m x 1.78m)

DOWNSTAIRS WC
5'10" x 2'7" (1.78m x 0.79m)

LANDING

BEDROOM ONE
15'1" x 11'2" (4.60m x 3.40m)

BEDROOM TWO
12'1" x 11'2" (3.68m x 3.40m)

BEDROOM THREE
12'1" x 10'9" (3.68m x 3.28m)

BEDROOM FOUR
10'9" x 9'11" (3.28m x 3.02m)

BATHROOM
9'4" x 7'9" (2.84m x 2.36m)

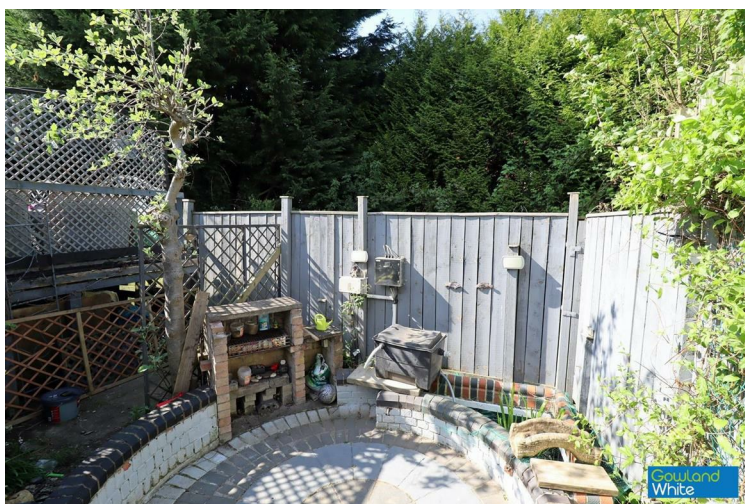
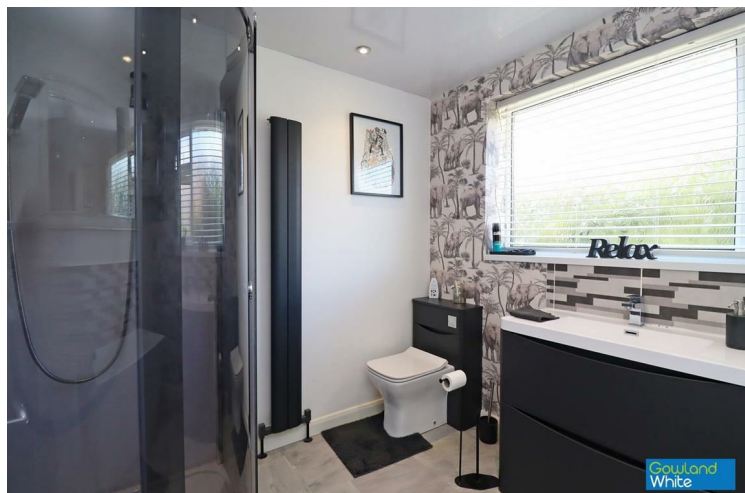
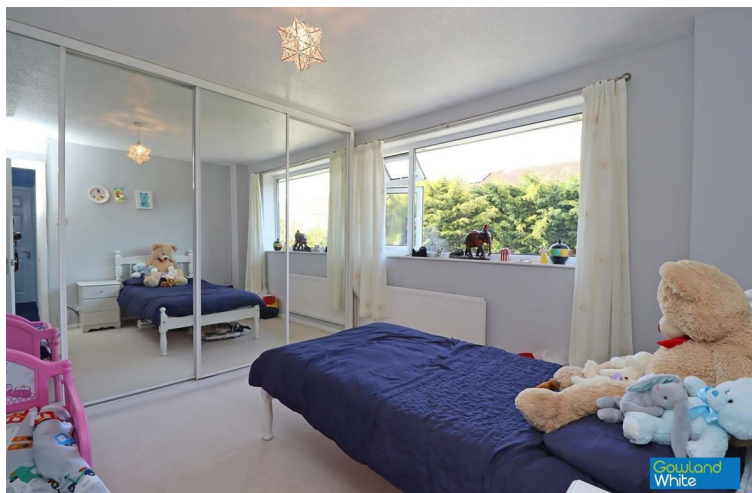
AML PROCEDURE
To comply with anti-money laundering regulations (AML) all estate agents must be registered with HMRC. Gowland White complies with this legislation by using an online AML risk assessment company, approved by the UK Government. Please note that all buyers are charged a fee of £36.00 (inc. VAT), for each buyer, to cover this process. These fees are payable before we can progress an agreed sale.



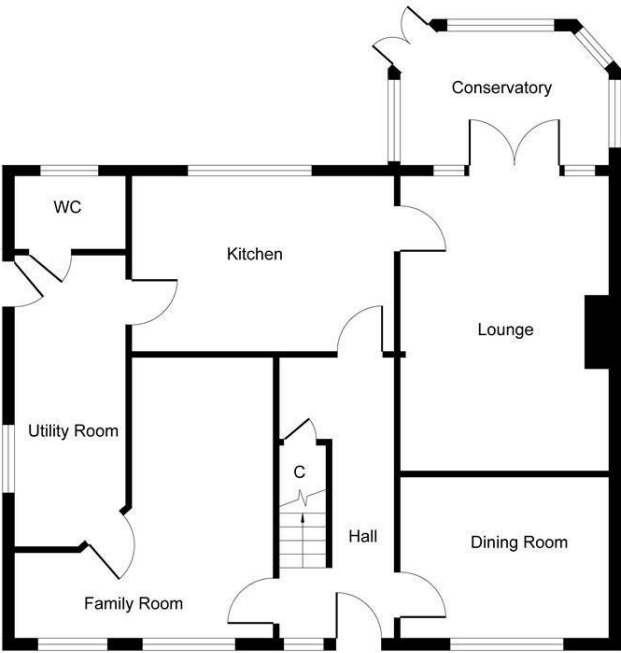


Greens Grove, Hartburn, Stockton-On-Tees, TS18 5AW

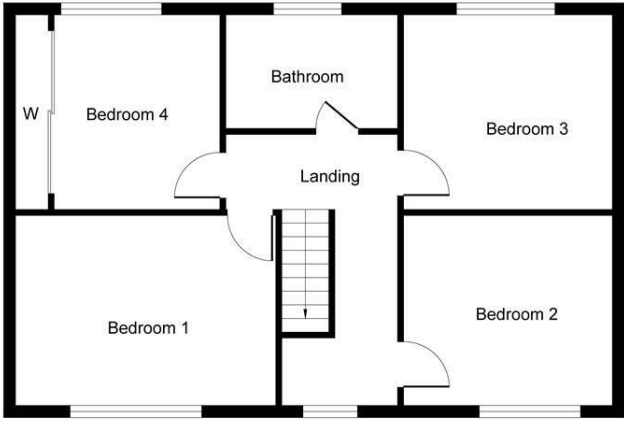




Greens Grove, Hartburn, Stockton-On-Tees, TS18 5AW

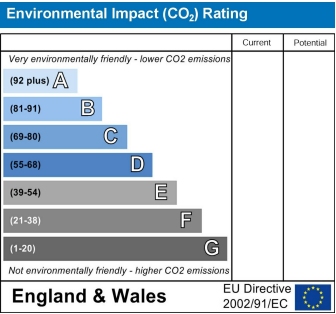
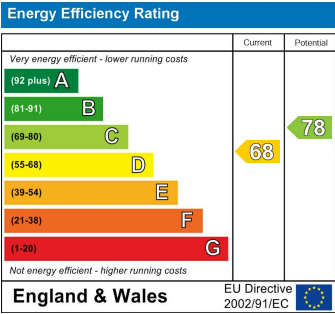
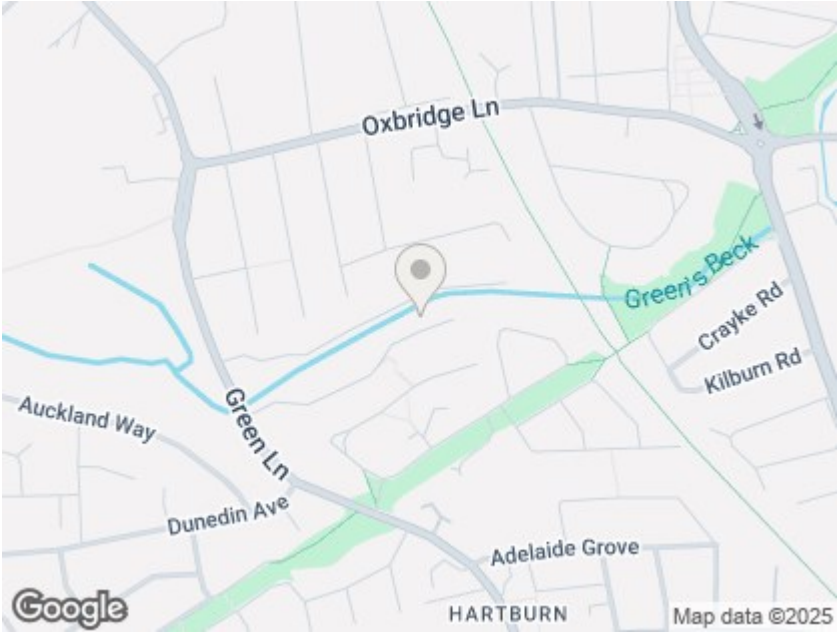


Ground Floor



First Floor

Whilst every attempt has been made to ensure the accuracy of the floor plan contained here, measurements of doors, windows, rooms and any other items are approximate and no responsibility is taken for any error, omission, or mis-statement. The measurements should not be relied upon for valuation, transaction and/or funding purposes. This plan is for illustrative purposes only and should be used as such by any prospective purchaser or tenant. The services, systems and appliances shown have not been tested and no guarantee as to their operability or efficiency can be given.
Copyright V360 Ltd 2025 | www.houseviz.com



VIEWING
Please contact us on 01642 615657 if you wish to arrange a viewing or would like more information.

These particulars, whilst believed to be accurate are set out as a general outline only for guidance and do not constitute any part of an offer or contract. Intending purchasers should not rely on them as statements of representation of fact, but must satisfy themselves by inspection or otherwise as to their accuracy. No person in this firms employment has the authority to make or give any representation or warranty in respect of the property.

17 Bishop Street, Stockton on Tees, TS18 1SY
stockton@gowlandwhite.co.uk