



## Forest Park, Stillington, TS21 1NW

This beautifully presented 4 bedroom townhouse spans three floors and is situated in a quiet cul-de-sac within the village of Stillington, making it an ideal home for a young family or first time buyer.

Upon entering, the hallway provides access to a ground floor WC and a modern dining kitchen, complete with high gloss doors, an integrated oven, hob, dishwasher and breakfast bar seating area for up to 4 people. French doors open from the kitchen into the rear garden. The garage has been converted to offer both a study and additional storage space.

The first floor features a spacious lounge with a Juliet balcony, offering views over greenbelt land and mature trees. A modern bathroom fitted with 'on trend' matt black tapware and the third bedroom complete this level.

On the second floor, there are three more bedrooms, including the master bedroom with a stylish en-suite, featuring a walk-in shower enclosure.

To the front, the property provides a double driveway leading to an integral single garage, which has been divided to provide front storage only. The enclosed south facing rear garden offers excellent privacy and features an artificial lawn, timber decking area, and an outdoor bar—perfect for entertaining during the summer months.

Stillington is located close to Stockton-on-Tees and Sedgefield, surrounded by picturesque countryside. The village is serviced by a local bus route, and there is easy access to the A1(M) and A19, making it ideal for commuting.

Offers In The Region Of £180,000



4



2



1



B



# Forest Park, Stillington, TS21 1NW

## HALL

## KITCHEN

14'10" x 12'6" (4.52m x 3.81m)

## WC

6' x 2'9" (1.83m x 0.84m)

## STORE

9'7" x 7'11" (2.92m x 2.41m)

## LANDING

## LOUNGE

15' x 13'5" (4.57m x 4.09m)

## BEDROOM FOUR

10'2" x 8'1" (3.10m x 2.46m)

## BATHROOM

8'1" x 5'6" (2.46m x 1.68m)

## LANDING

## BEDROOM ONE

16' x 8'7" (4.88m x 2.62m)

## ENSUITE

8'7" x 5'11" (2.62m x 1.80m)

## BEDROOM TWO

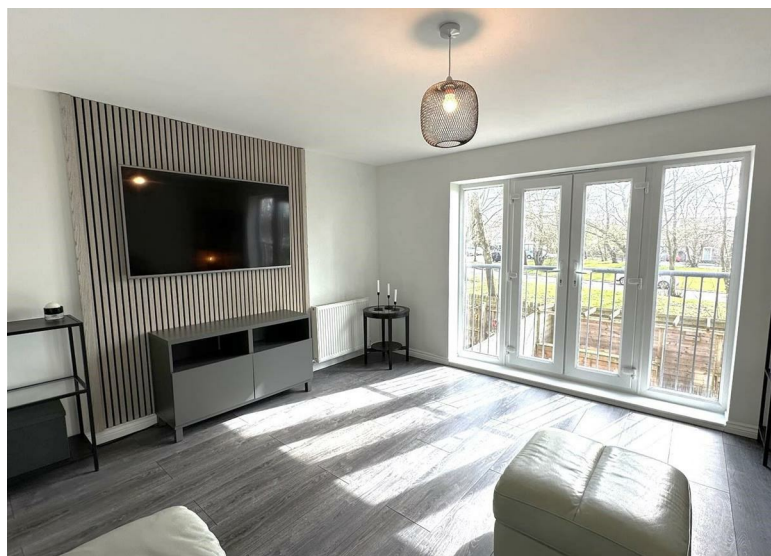
13'5" x 8'4" (4.09m x 2.54m)

## BEDROOM THREE

10' x 6'4" (3.05m x 1.93m)

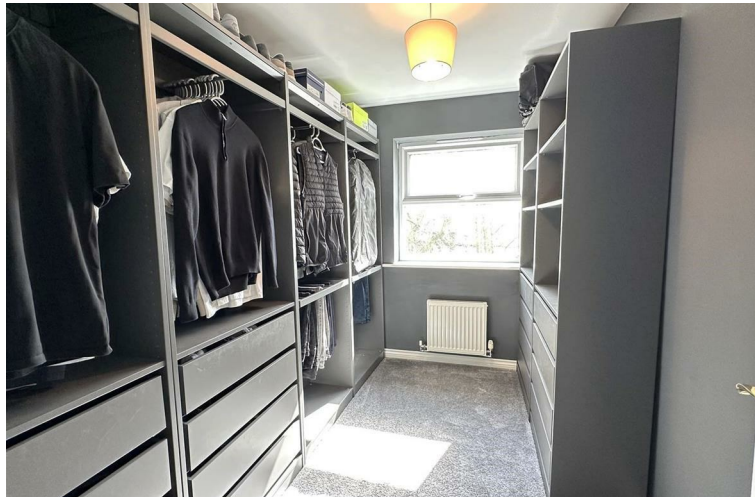
## AML PROCEDURE

To comply with anti-money laundering regulations (AML) all estate agents must be registered with HMRC. Gowland White complies with this legislation by using an online AML risk assessment company, approved by the UK Government. Please note that all buyers are charged a fee of £36.00 (inc. VAT), for each buyer, to cover this process. These fees are payable before we can progress an agreed sale.





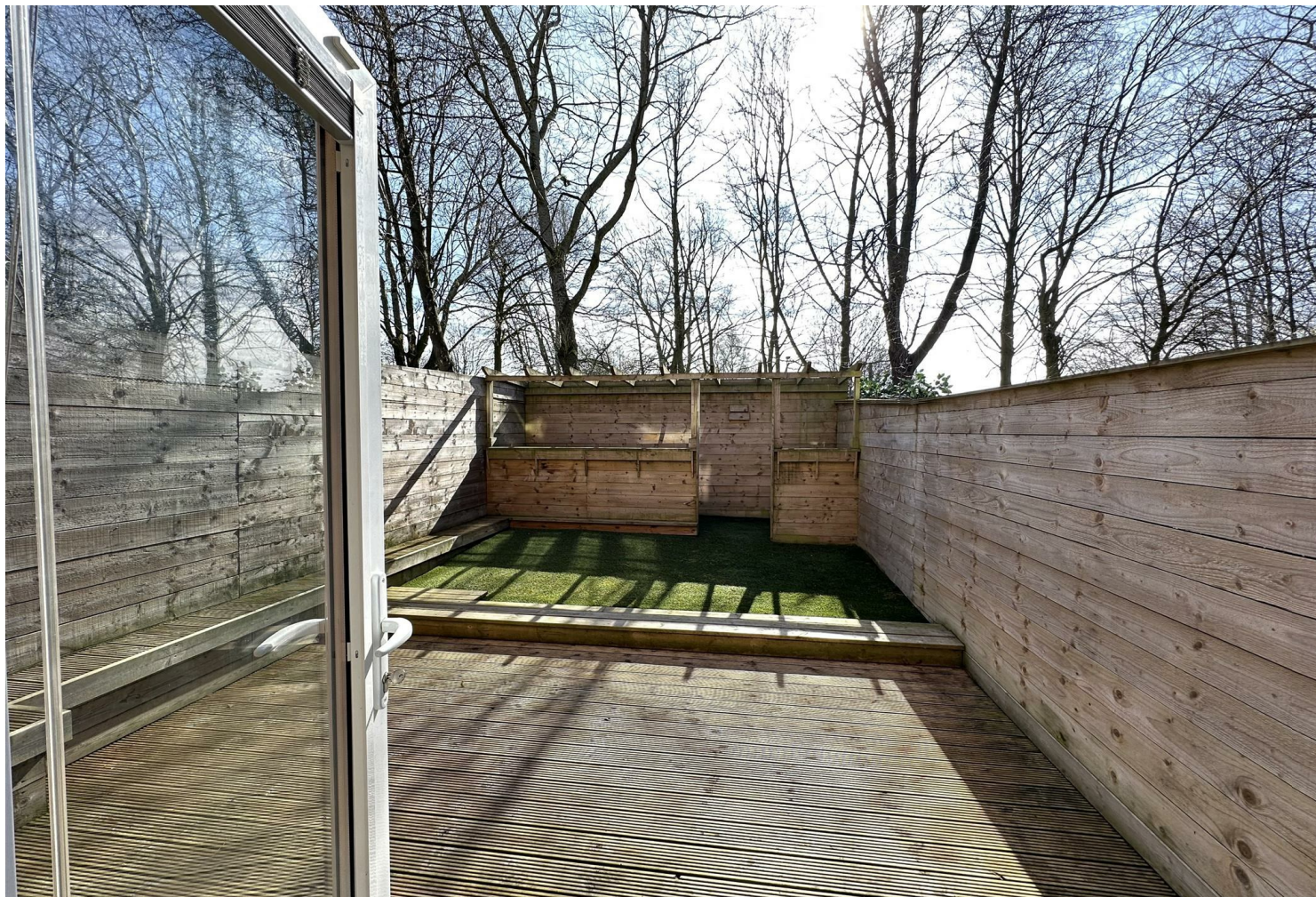
Forest Park, Stillington, TS21 1NW





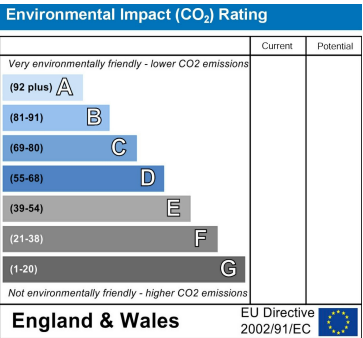
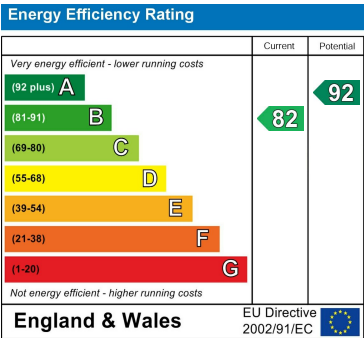
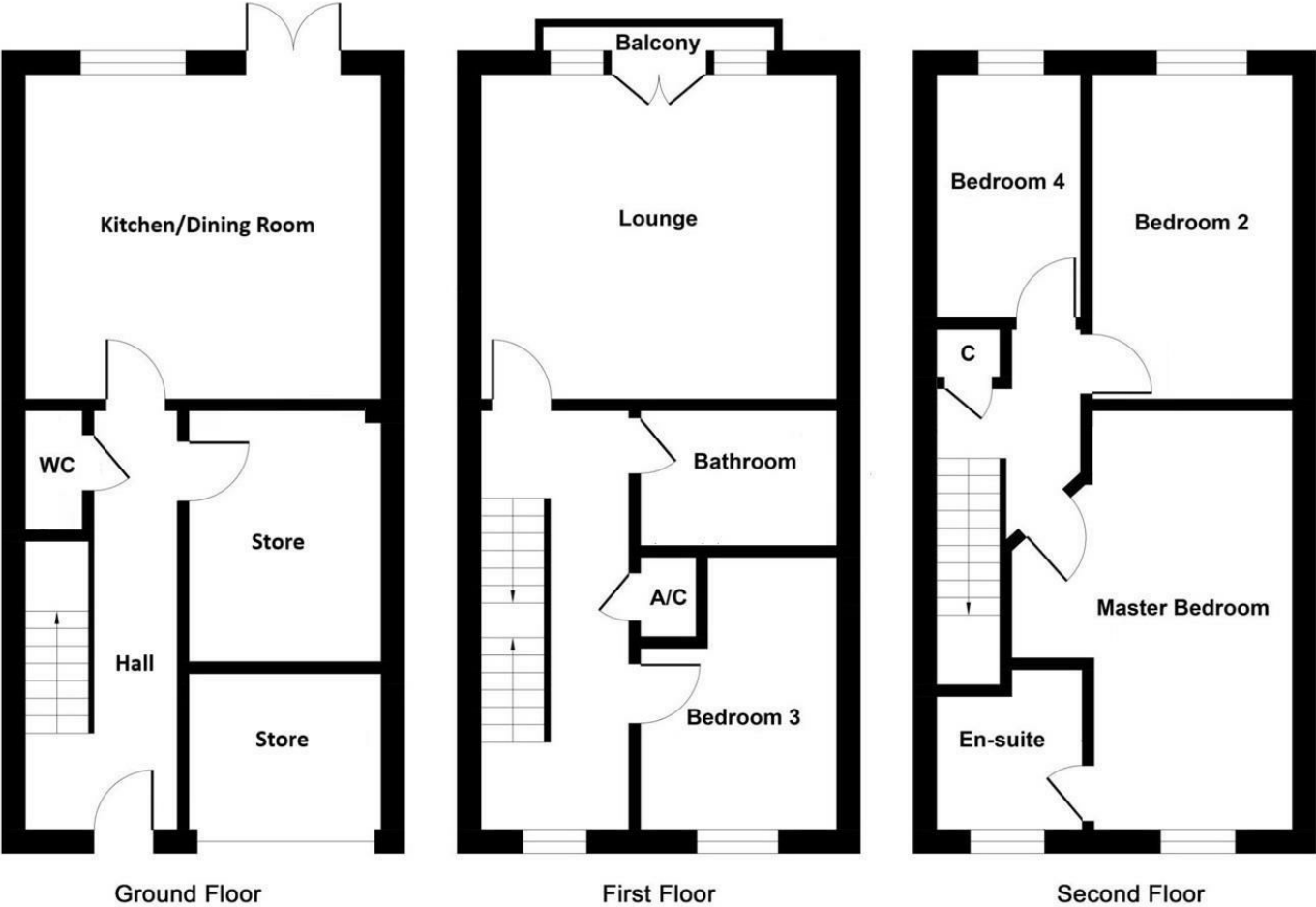








Forest Park, Stillington, TS21 1NW



**VIEWING**  
Please contact us on 01642 615657 if you wish to arrange a viewing or would like more information.

These particulars, whilst believed to be accurate are set out as a general outline only for guidance and do not constitute any part of an offer or contract. Intending purchasers should not rely on them as statements of representation of fact, but must satisfy themselves by inspection or otherwise as to their accuracy. No person in this firms employment has the authority to make or give any representation or warranty in respect of the property.

17 Bishop Street, Stockton on Tees, TS18 1SY  
stockton@gowlandwhite.co.uk