



Chelmsford Avenue, Fairfield, TS18 5AG

This beautifully extended three bedroom semi-detached house in Fairfield is an ideal family home, offering well presented accommodation throughout. Situated in a cul-de-sac, the property features a garage and a west-facing garden.

Inside, the accommodation comprises a hall leading to a spacious lounge with a bay window, a contemporary gas fire, and patio doors opening to the rear garden. The dining room connects seamlessly to a beautifully refitted kitchen. The kitchen is fitted with a modern range of units, an integrated oven and gas hob, and enhanced by granite worktops.

Upstairs, there are three bedrooms, including a master bedroom and second bedroom with fitted wardrobes. The bathroom is generously sized, featuring both a separate bath and shower.

Externally, the front of the property offers a block paved driveway leading to the garage, while the rear includes a patio, lawned garden, and established shrubbery, all benefitting from a west-facing aspect.

This home is conveniently located close to reputable local schools, including Stockton Sixth Form College, and is within easy reach of shops, amenities, and the A66, making it ideal for commuters.

£195,000



Chelmsford Avenue, Fairfield, TS18 5AG

HALL

LIVING ROOM

29'4" x 11'6" (8.94m x 3.51m)

DINING ROOM

13'1" x 7'10" (3.99m x 2.39m)

KITCHEN

12'3" x 6'2" (3.73m x 1.88m)

LANDING

BEDROOM ONE

12'5" x 9'2" (3.78m x 2.79m)

BEDROOM TWO

11'0" x 11'6" (3.35m x 3.51m)

BEDROOM THREE

7'0" x 6'3" (2.13m x 1.91m)

BATHROOM

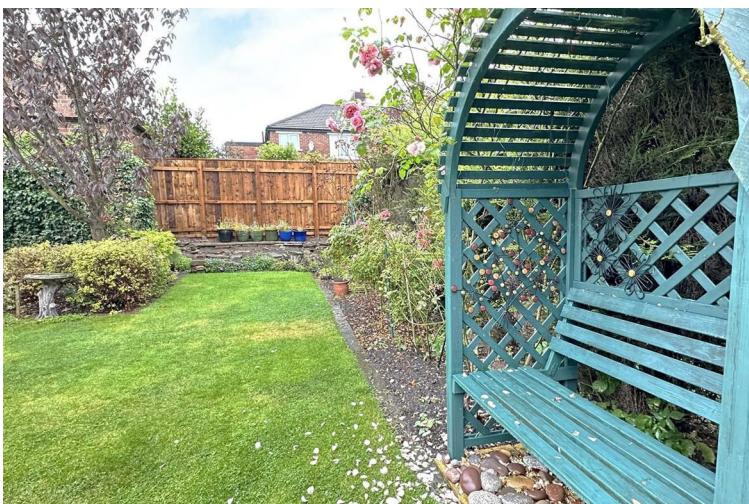
8'5" x 7'9" (2.57m x 2.36m)



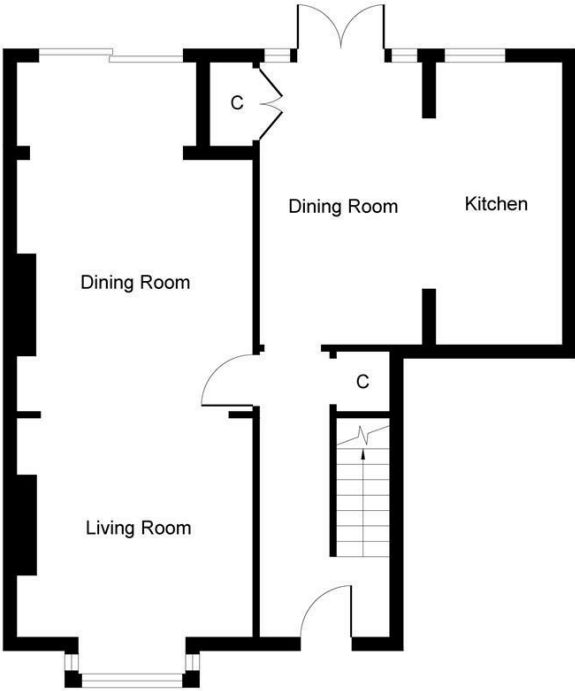
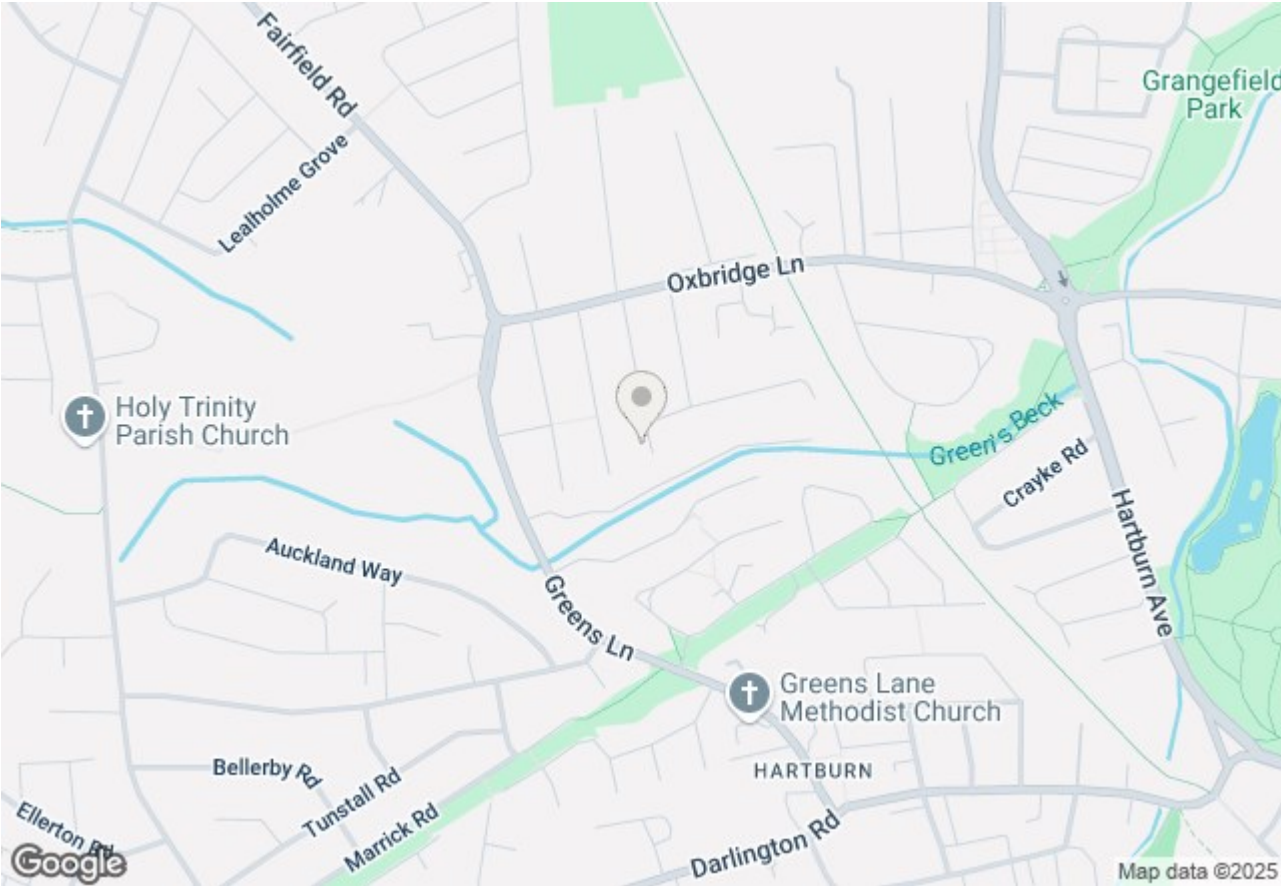
Tel: 01642 615657



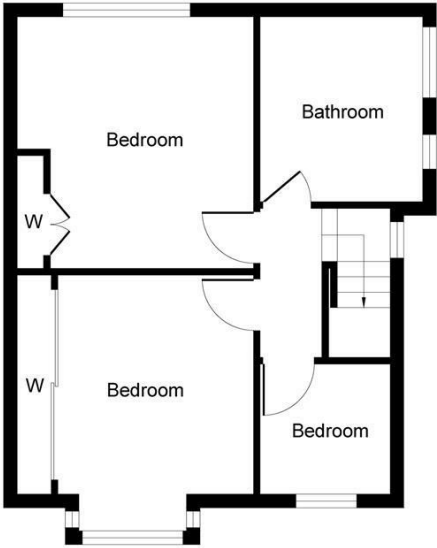
Chelmsford Avenue, Fairfield, TS18 5AG



Tel: 01642 615657



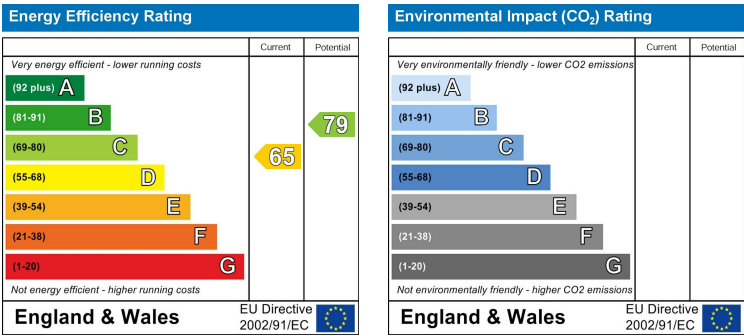
Ground Floor



First Floor

Whilst every attempt has been made to ensure the accuracy of the floor plan contained here, measurements of doors, windows, rooms and any other items are approximate and no responsibility is taken for any error, omission, or mis-statement. The measurements should not be relied upon for valuation, transaction and/or funding purposes. This plan is for illustrative purposes only and should be used as such by any prospective purchaser or tenant. The services, systems and appliances shown have not been tested and no guarantee as to their operability or efficiency can be given.
Copyright V360 Ltd 2024 | www.houseviz.com

Chelmsford Avenue, Fairfield, TS18 5AG



VIEWING

Please contact us on 01642 615657 if you wish to arrange a viewing or would like more information.

These particulars, whilst believed to be accurate are set out as a general outline only for guidance and do not constitute any part of an offer or contract. Intending purchasers should not rely on them as statements of representation of fact, but must satisfy themselves by inspection or otherwise as to their accuracy. No person in this firms employment has the authority to make or give any representation or warranty in respect of the property.