



## Denton Close, Hardwick, Stockton-On-Tees, TS19 8NF

A well presented three bedroom home situated in a pleasant cul-de-sac, featuring off-road parking enclosed by double gates and railings. An ideal first-time purchase or investment, the property offers family-sized accommodation and is located close to local shops, schools for all age groups, regular bus services and North Tees Hospital.

Internally, the home benefits from gas central heating and uPVC double glazing. The ground floor comprises an entrance hall, a lounge with an attractive fireplace and electric fire, a kitchen with integrated gas hob, oven, and dishwasher, and a dining room. The first floor features a landing, three bedrooms, and a family bathroom with a shower over the bath.

Externally, the property boasts a larger-than-average, enclosed "wrap-around" side/rear garden with a desirable south-west facing aspect, complete with a well-maintained lawn, a patio area and two timber sheds providing additional storage.

£105,000



# Denton Close, Hardwick, Stockton-On-Tees, TS19 8NF

HALL

LOUNGE

13'3" x 11'4" (4.04m x 3.45m)

DINING ROOM

10'8" x 9'9" (3.25m x 2.97m )

KITCHEN

9' x 6'5" (2.74m x 1.96m)

LANDING

BEDROOM ONE

11'5" x 9'6" (3.48m x 2.90m)

BEDROOM TWO

9'9" x 9'6" (2.97m x 2.90m)

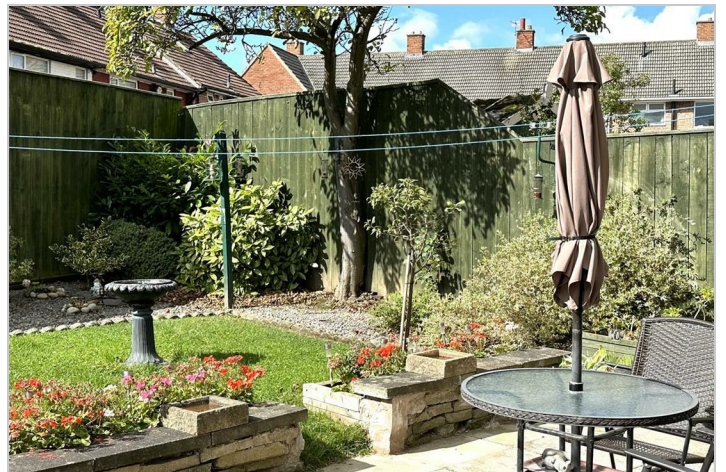
BEDROOM THREE

8'1" x 5'5" (2.46m x 1.65m )

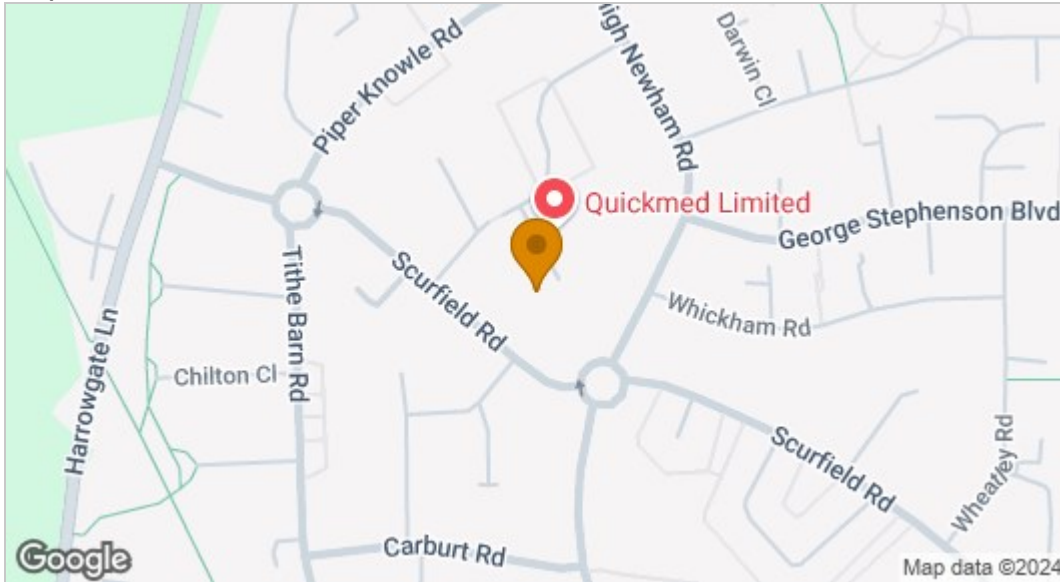
BATHROOM

8'1" x 5'5" (2.46m x 1.65m)

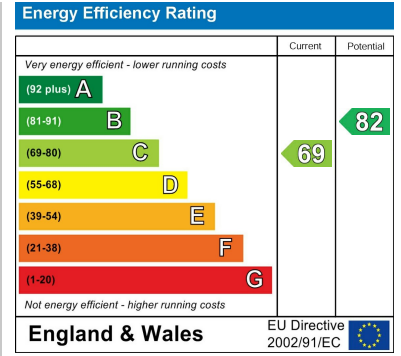




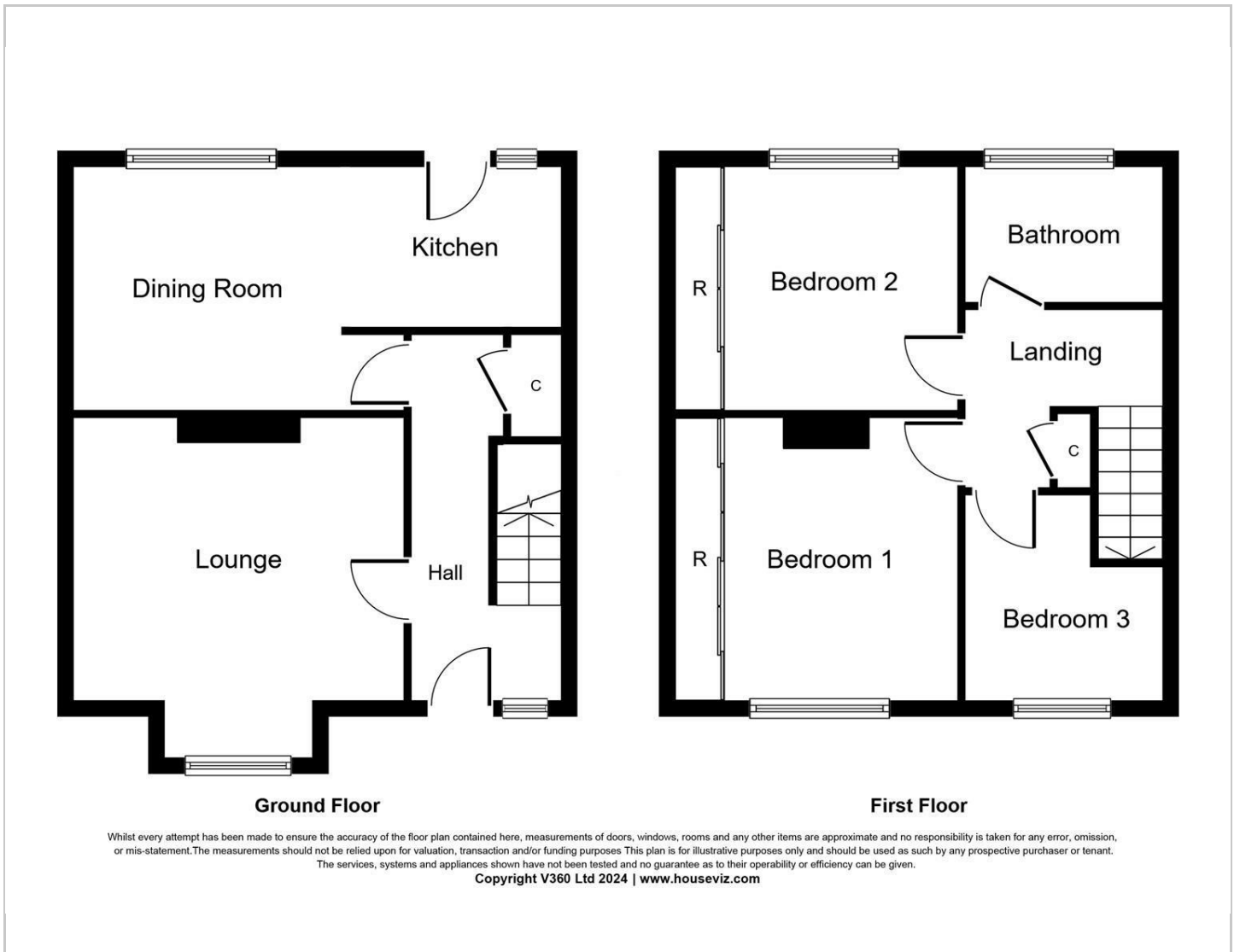
## Map



## EPC graph



## Floor Plan



## VIEWING

Please contact us on 01642 615657 if you wish to arrange a viewing or would like more information.

These particulars, whilst believed to be accurate are set out as a general outline only for guidance and do not constitute any part of an offer or contract. Intending purchasers should not rely on them as statements of representation of fact, but must satisfy themselves by inspection or otherwise as to their accuracy. No person in this firm's employment has the authority to make or give any representation or warranty in respect of the property.