



Richardson Road, Stockton-On-Tees, TS18 3LH

This three bedroom mid-terraced house is available for purchase with no onward chain. This property is well positioned within easy access of local schools and amenities along with the ever popular Ropner Park being just a short walk away. For commuting the A66 is close by offering excellent access to good road networks.

The ground floor features a hallway, lounge with fireplace, separate dining room, and kitchen with access to the rear yard. The upper floor offers three bedrooms and a bathroom/WC. Benefiting from gas central heating and double glazing throughout, this home ensures comfort and energy efficiency. Outside, you'll find an enclosed rear yard, as well as a small forecourt garden to the front. On street parking is available.

Gowland White are a SALES and LETTINGS Agent, please feel free to call and obtain further information or advice regarding all aspects of buying and letting.

Offers Over £80,000



Richardson Road, Stockton-On-Tees, TS18 3LH

HALL

LOUNGE
15' x 11'7" (4.57m x 3.53m)

DINING ROOM
8'5" x 8'2" (2.57m x 2.49m)

KITCHEN
8'8" x 8' (2.64m x 2.44m)

LANDING

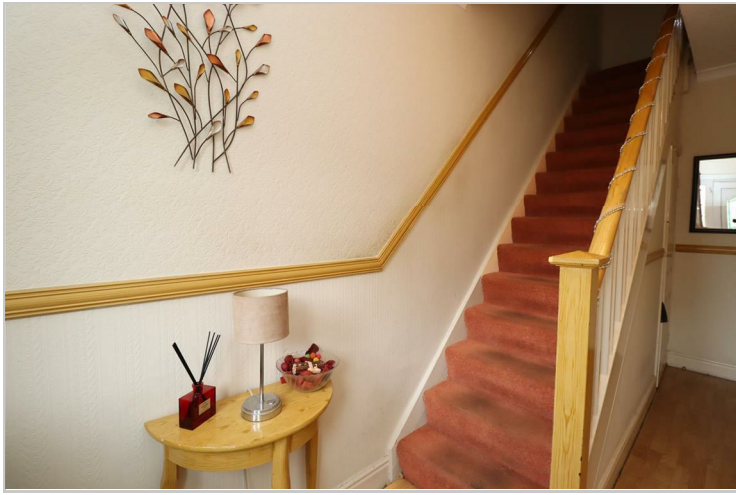
BEDROOM ONE
11'7" x 9'11" (3.53m x 3.02m)

BATHROOM
7'2" x 5'11" (2.18m x 1.80m)

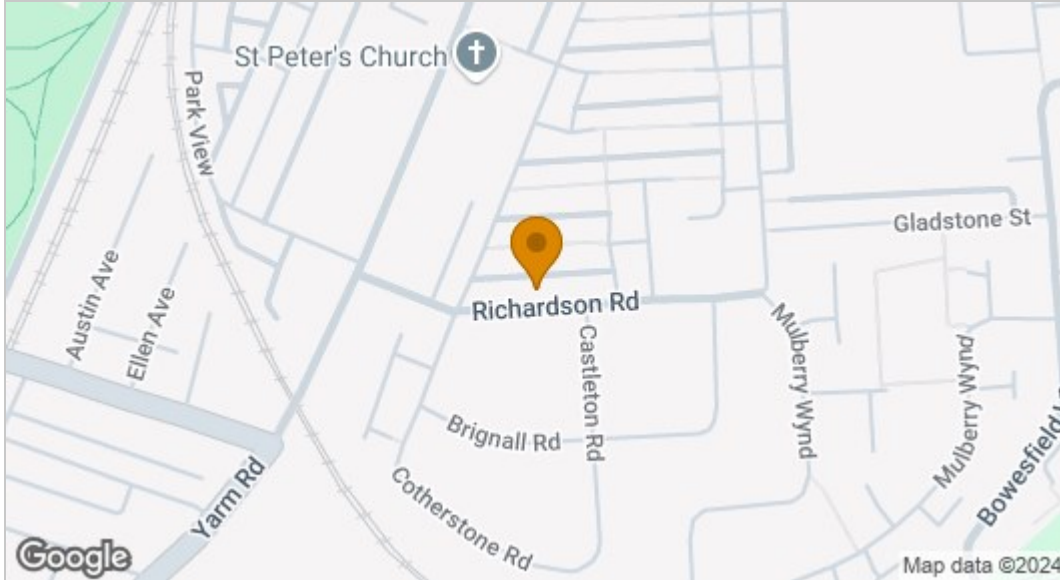
BEDROOM TWO
11'7" x 9'3" (3.53m x 2.82m)

BEDROOM THREE
7'3" x 6'1" (2.21m x 1.85m)

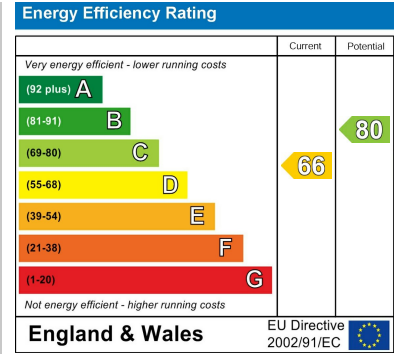




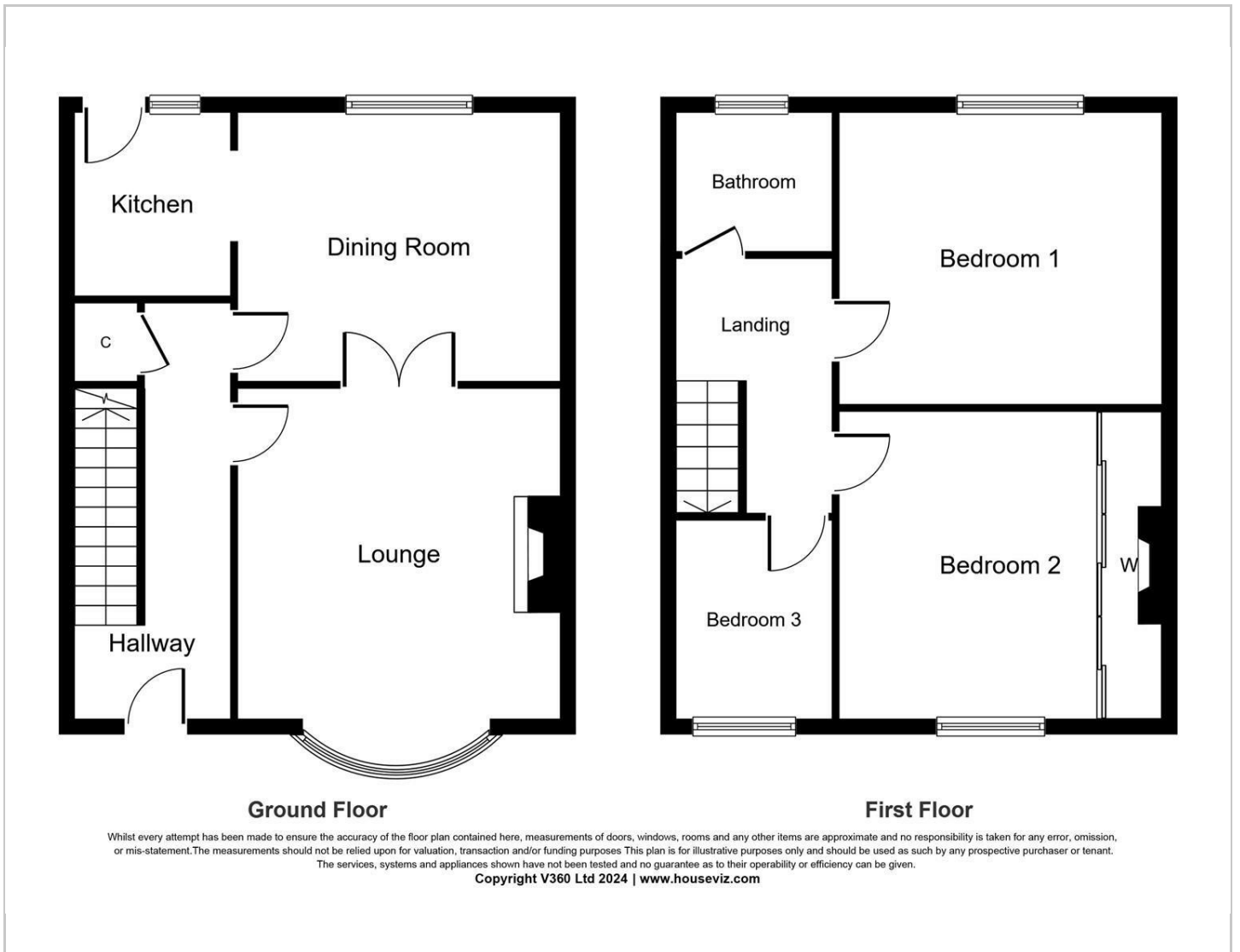
Map



EPC graph



Floor Plan



VIEWING

Please contact us on 01642 615657 if you wish to arrange a viewing or would like more information.

These particulars, whilst believed to be accurate are set out as a general outline only for guidance and do not constitute any part of an offer or contract. Intending purchasers should not rely on them as statements of representation of fact, but must satisfy themselves by inspection or otherwise as to their accuracy. No person in this firm's employment has the authority to make or give any representation or warranty in respect of the property.