



Honey Pot Close, Whitton Village, Stockton-On-Tees, TS21 1NY

Built by Clarion Homes in the charming village of Whitton, this stunning four-bedroom detached house, designed as "The Ripley," is perfect for families seeking a semi-rural setting.

Upon entering, you are greeted by a welcoming hallway featuring an elegant oak banister and Karndean flooring, which extends into the dining room. The dining room, with its French doors, opens to the rear garden, creating a seamless indoor-outdoor living experience. The kitchen, crafted by Roundal Kitchens, offers a range of modern units, painted solid ash doors, Brazilian walnut countertops, a stone splashback, and an array of integrated appliances including a BOSCH dishwasher and washing machine, a NEFF induction hob, double oven and fridge/freezer. A convenient downstairs W/C is also available.

Upstairs, you will find four generously sized bedrooms. The master bedroom includes an en-suite shower room with natural cork tile flooring. The family bathroom features a shower over the bath and is finished with slate Karndean square tiles, completing the upstairs living space.

Additional features of this property include oak doors, a security alarm system, a two-zone heating system, and double glazed windows.

Externally, the front of the property offers picturesque views across the fields. The rear includes a double width block paved driveway leading to a large single garage. The rear garden features a patio area, a lawn, and mature shrubbery, providing a perfect space for relaxation and entertainment.

Whitton Village is situated close to the villages of Bishopton, Carlton, Stillington and Redmarshall, with highly regarded primary schools nearby.

The sought-after town of Sedgefield is close by and offers a broader range of shops and cafes, together with schools, doctors and dental surgeries, and the famous Sedgefield Racecourse just a short drive away. Ideal for the commuter, Whitton Village is situated close to major road links including the A689, A19 and A1(M).

£360,000



Honey Pot Close, Whitton Village, Stockton-On-Tees, TS21 1NY

HALL

LOUNGE

15'1 x 13'6 (4.60m x 4.11m)

KITCHEN

18'10 x 7'7 (5.74m x 2.31m)

DINING

9'9 x 10'7 (2.97m x 3.23m)

W/C

5'11 x 2'10 (1.80m x 0.86m)

LANDING

MASTER BEDROOM

15'9 x 11'4 (4.80m x 3.45m)

EN-SUITE

5'1 x 5'5 (1.55m x 1.65m)

BEDROOM TWO

16'2 x 8'8 (4.93m x 2.64m)

BEDROOM THREE

9'8 x 10'8 (2.95m x 3.25m)

BEDROOM FOUR

10'5 x 9'0 (3.18m x 2.74m)

BATHROOM

7'1 x 5'5 (2.16m x 1.65m)



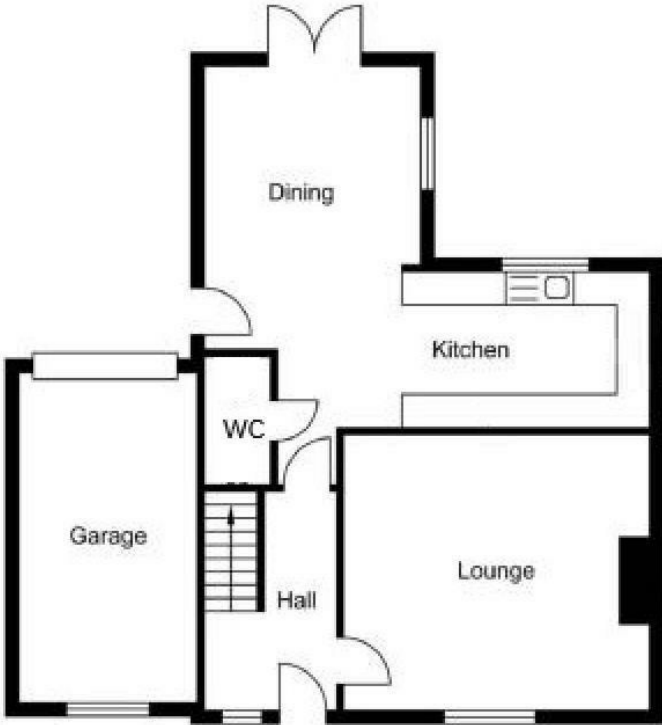
Honey Pot Close, Whitton Village, Stockton-On-Tees,



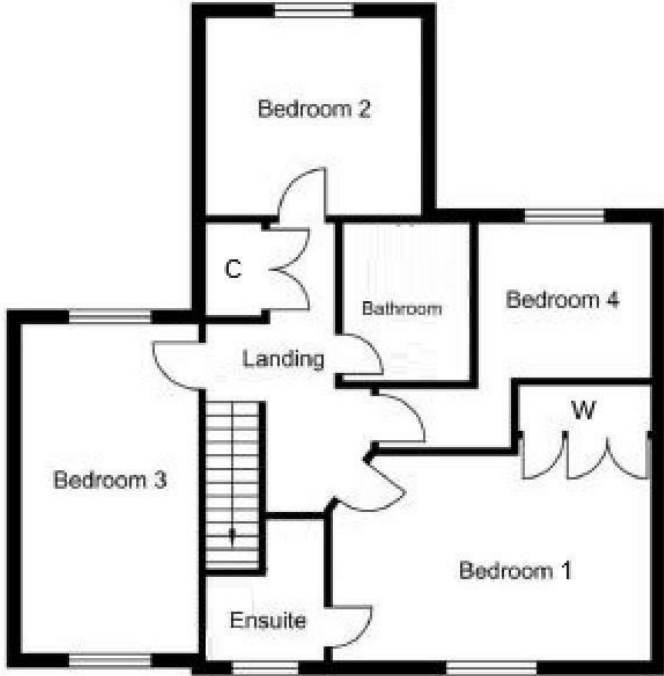
Honey Pot Close, Whitton Village, Stockton-On-Tees,



Honey Pot Close, Whitton Village, Stockton-On-Tees,

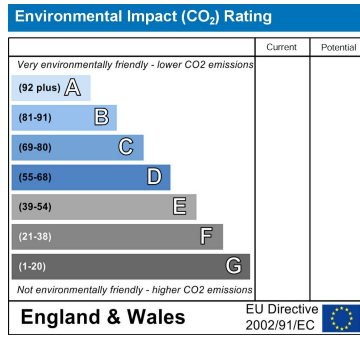
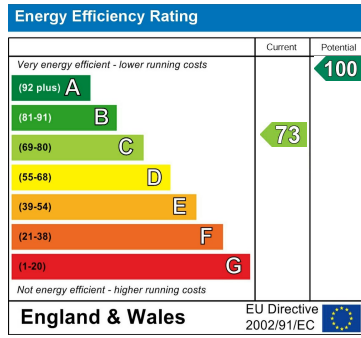


Ground Floor



First Floor

Honey Pot Close, Whitton Village, Stockton-On-Tees,



VIEWING

Please contact us on 01642 615657 if you wish to arrange a viewing or would like more information.

These particulars, whilst believed to be accurate are set out as a general outline only for guidance and do not constitute any part of an offer or contract. Intending purchasers should not rely on them as statements of representation of fact, but must satisfy themselves by inspection or otherwise as to their accuracy. No person in this firm's employment has the authority to make or give any representation or warranty in respect of the property.