



Oxbridge Lane, Stockton-On-Tees, TS18 4HY

This impressive four bedroom detached house, with double garage occupies a secluded and substantial spot in a central position in Stockton, and is one of the best sites for a family home in this area. Enjoying a plot of approximately 0.3 acres and accessed via a private road serving only 3 properties, this stunning home offers space, privacy and easy parking.

The accommodation comprises of a large hallway leading to the beautiful, spacious lounge with log burning stove, bay window and sliding doors out to the south facing garden. Adjacent to the lounge is a family room/home office that equally benefits from sliding doors to the garden. No expense has been spared in the expansive kitchen/breakfast room, which offers a range of fitted units including a kitchen island and window seat. It provides granite worktops and a variety of integrated Neff appliances including microwave, dishwasher, double oven, induction hob, fridge and a Quooker instant boiling water tap. In addition, there is also a larger than average utility room with extra storage, sink and space for a washing machine and freezer. A downstairs W/C and a separate dining room complete the downstairs living areas. At the top of the stairs a glass door welcomes you onto the wrap around balustraded terrace, offering a sunny vantage point with views overlooking the garden. The master bedroom comes with fitted wardrobes and an en-suite shower room. There are three further double bedrooms, two fitted with wardrobes. The family bathroom offers a freestanding bath with pillar taps and a separate, large shower cubicle.

Externally, is a gated, lawned garden and vegetable plots, and a sizable driveway leading to the double garage with electric doors. The stunning, manicured lawned garden featuring sun terrace, pergola and water fountain is south facing. Due to its prime locality, close to schools, shops, sports facilities and commuter links via the A66 close by, this property is not to be missed.

Offers In The Region Of £625,000



4



2



3



D

HALLWAY

CLOAKROOM/WC
5'8 x 3'10 (1.73m x 1.17m)

LOUNGE
21'7 x 13'7 (6.58m x 4.14m)

HOME OFFICE/FAMILY ROOM
13'7 x 8'9 (4.14m x 2.67m)

DINING ROOM
14'5 x 12'5 (4.39m x 3.78m)

KITCHEN/BREAKFAST ROOM
18'9 x 15'0 (5.72m x 4.57m)

UTILITY
12'5 x 11'4 (3.78m x 3.45m)

LANDING

MASTER BEDROOM
13'10 x 12'5 (4.22m x 3.78m)

EN-SUITE
7'2 x 5'2 (2.18m x 1.57m)

BEDROOM TWO
12'5 x 10'3 (3.78m x 3.12m)

BEDROOM THREE
11'6 x 10'0 (3.51m x 3.05m)

BEDROOM FOUR
11'2 x 8'7 (3.40m x 2.62m)

BATHROOM
8'2 x 7'0 (2.49m x 2.13m)

Oxbridge Lane, Stockton-On-Tees, TS18 4HY



Tel: 01642 615657

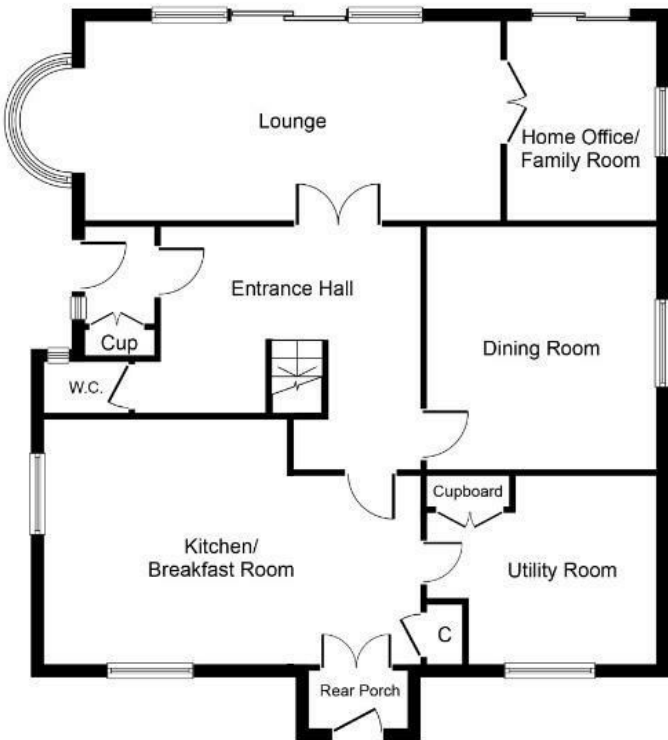
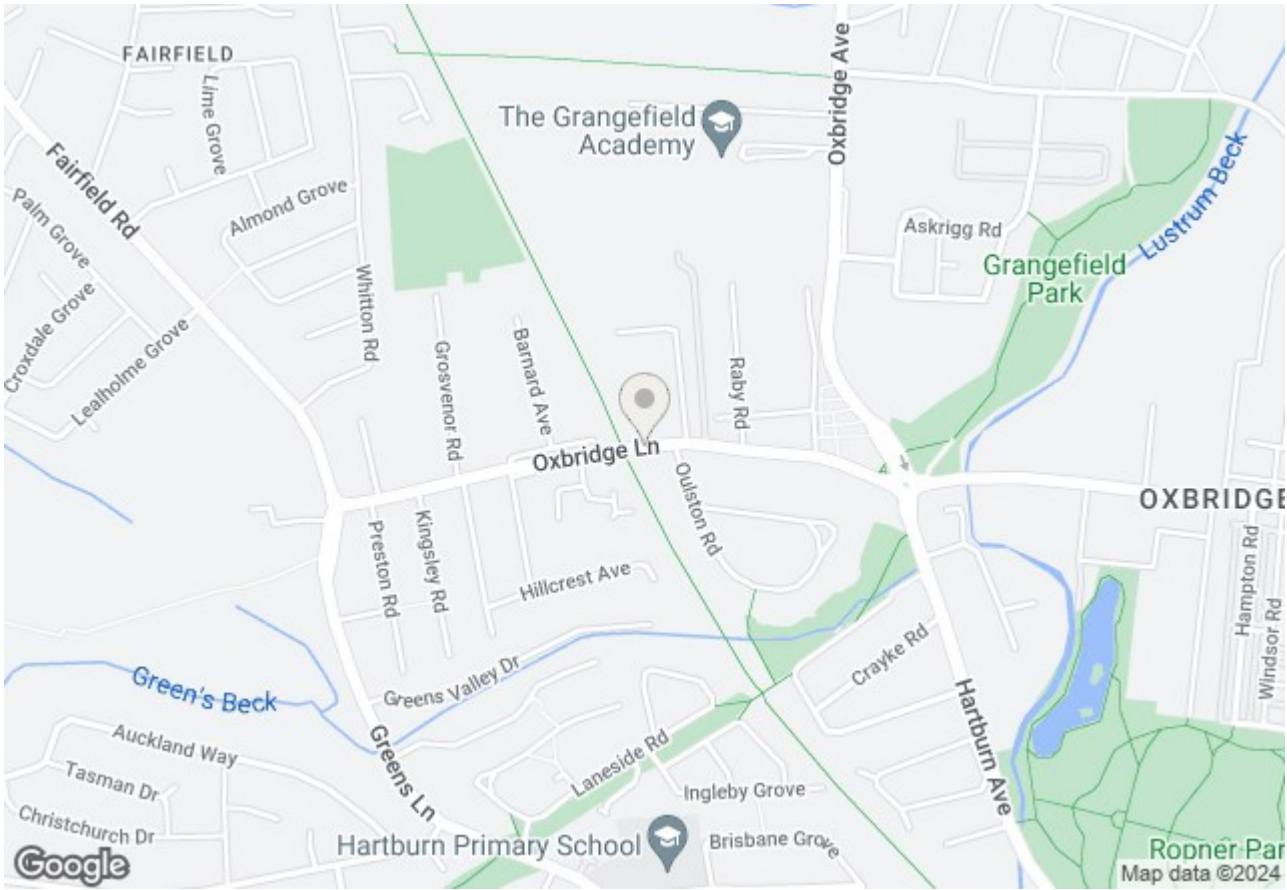
Oxbridge Lane, Stockton-On-Tees, TS18 4HY



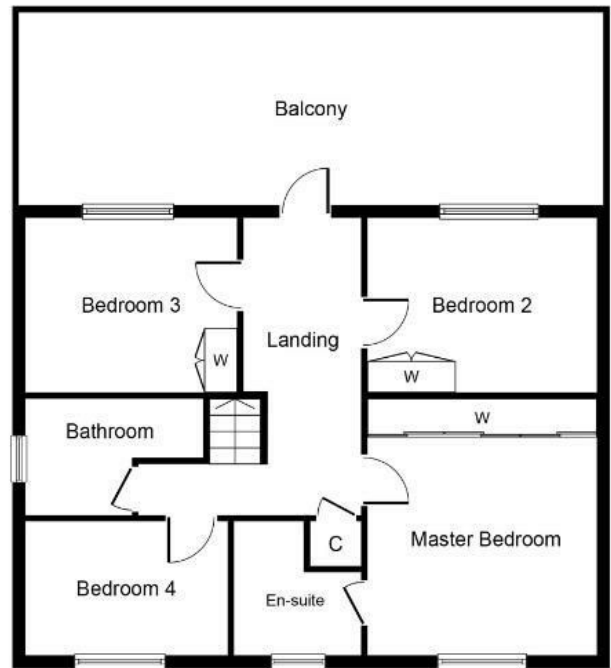
Oxbridge Lane, Stockton-On-Tees, TS18 4HY



Oxbridge Lane, Stockton-On-Tees, TS18 4HY



Ground Floor

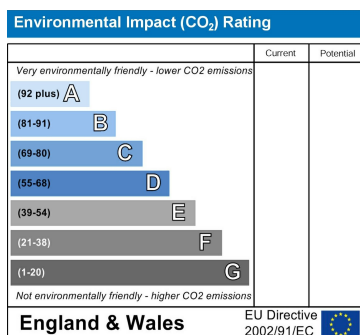
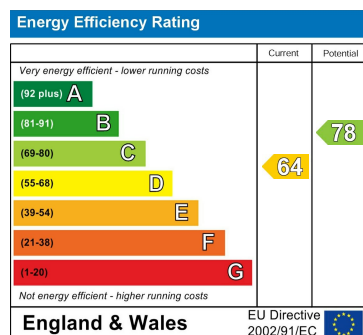


First Floor

Whilst every attempt has been made to ensure the accuracy of the floor plan contained here, measurements of doors, windows, rooms and any other items are approximate and no responsibility is taken for any error, omission, or mis-statement. The measurements should not be relied upon for valuation, transaction and/or funding purposes. This plan is for illustrative purposes only and should be used as such by any prospective purchaser or tenant. The services, systems and appliances shown have not been tested and no guarantee as to their operability or efficiency can be given.

Copyright V360 Ltd 2024 | www.houseviz.com

Oxbridge Lane, Stockton-On-Tees, TS18 4HY



VIEWING

Please contact us on 01642 615657 if you wish to arrange a viewing or would like more information.

These particulars, whilst believed to be accurate are set out as a general outline only for guidance and do not constitute any part of an offer or contract. Intending purchasers should not rely on them as statements of representation of fact, but must satisfy themselves by inspection or otherwise as to their accuracy. No person in this firm's employment has the authority to make or give any representation or warranty in respect of the property.