



Birkdale Road, Hartburn, Stockton-On-Tees, TS18 5JP

A wonderfully upgraded and extended three bedroom semi-detached dormer style house with garage in Hartburn.

Ground floor accommodation briefly includes a welcoming extended entrance adding to the feeling of space as soon as you enter the home. Also find a spacious lounge featuring a flame effect electric fire and a family bathroom fitted with a bath having an overhead shower and screen. Additionally, there's an extended dining room with double French doors that open out to the west facing rear garden. The modern kitchen includes granite worktops, integrated oven, hob, and washing machine. To the first floor there is a master bedroom with triple wardrobes and two further bedrooms. The property also benefits from combi gas central heating and double glazing throughout.

Externally to the front is a lawned garden with hedge which complements the block paved driveway which provides ample parking for multiple cars and leads to the detached garage with electric supply. The west facing rear garden offers lawn, decking with access to the garage and is neatly presented with an excellent level of privacy.

This property is well positioned for local amenities, easy access to the A66 and is always a popular family choice due to an excellent choice of schools in the area.

Offers Over £165,000



Birkdale Road, Hartburn, Stockton-On-Tees, TS18 5JP

HALL

LOUNGE

15'2 x 10'2 (4.62m x 3.10m)

DINING ROOM

16' x 7'9 (4.88m x 2.36m)

KITCHEN

8'5 x 7'7 (2.57m x 2.31m)

BATHROOM

6'6 x 5'5 (1.98m x 1.65m)

LANDING

BEDROOM ONE

11'1 x 9'10 (3.38m x 3.00m)

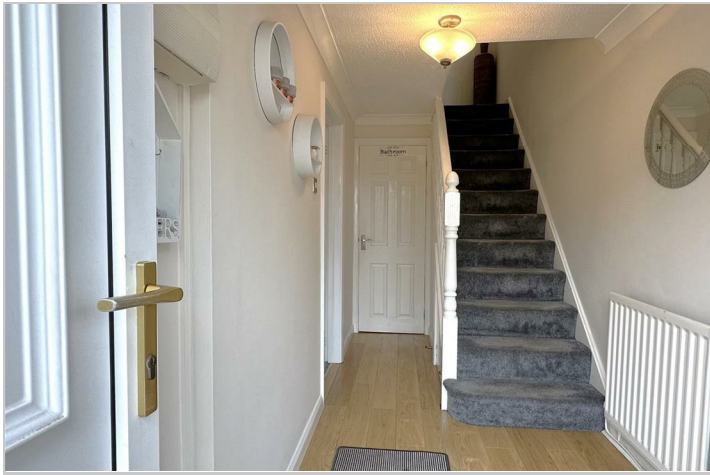
BEDROOM TWO

11'9 x 7'11 (3.58m x 2.41m)

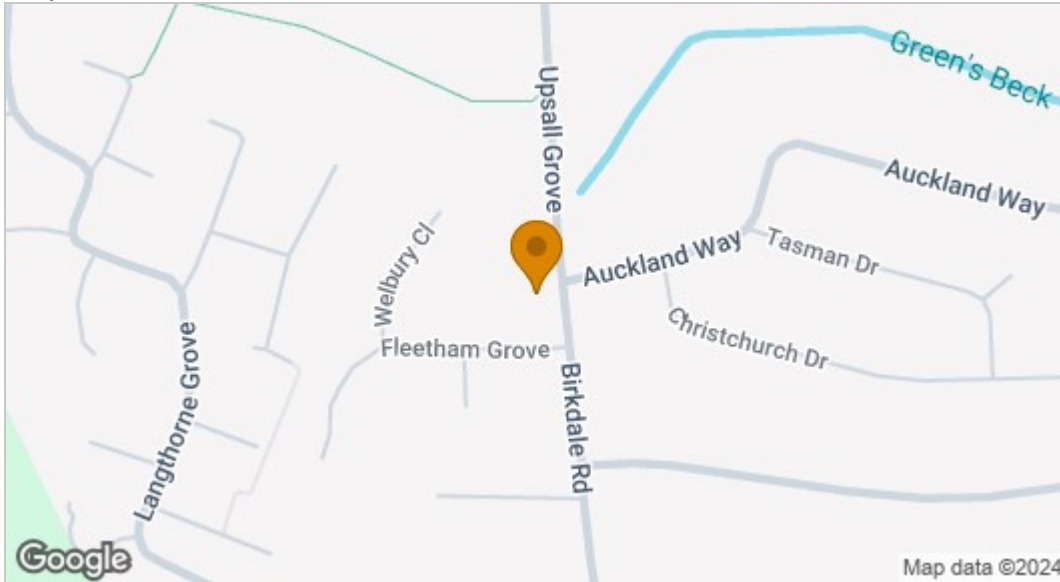
BEDROOM THREE

8'8 x 7'10 (2.64m x 2.39m)

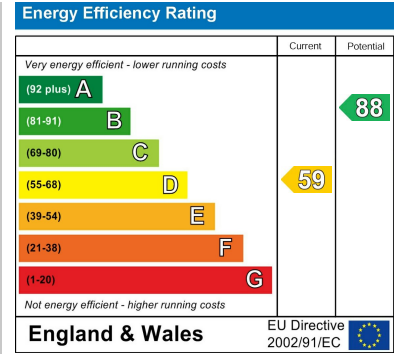




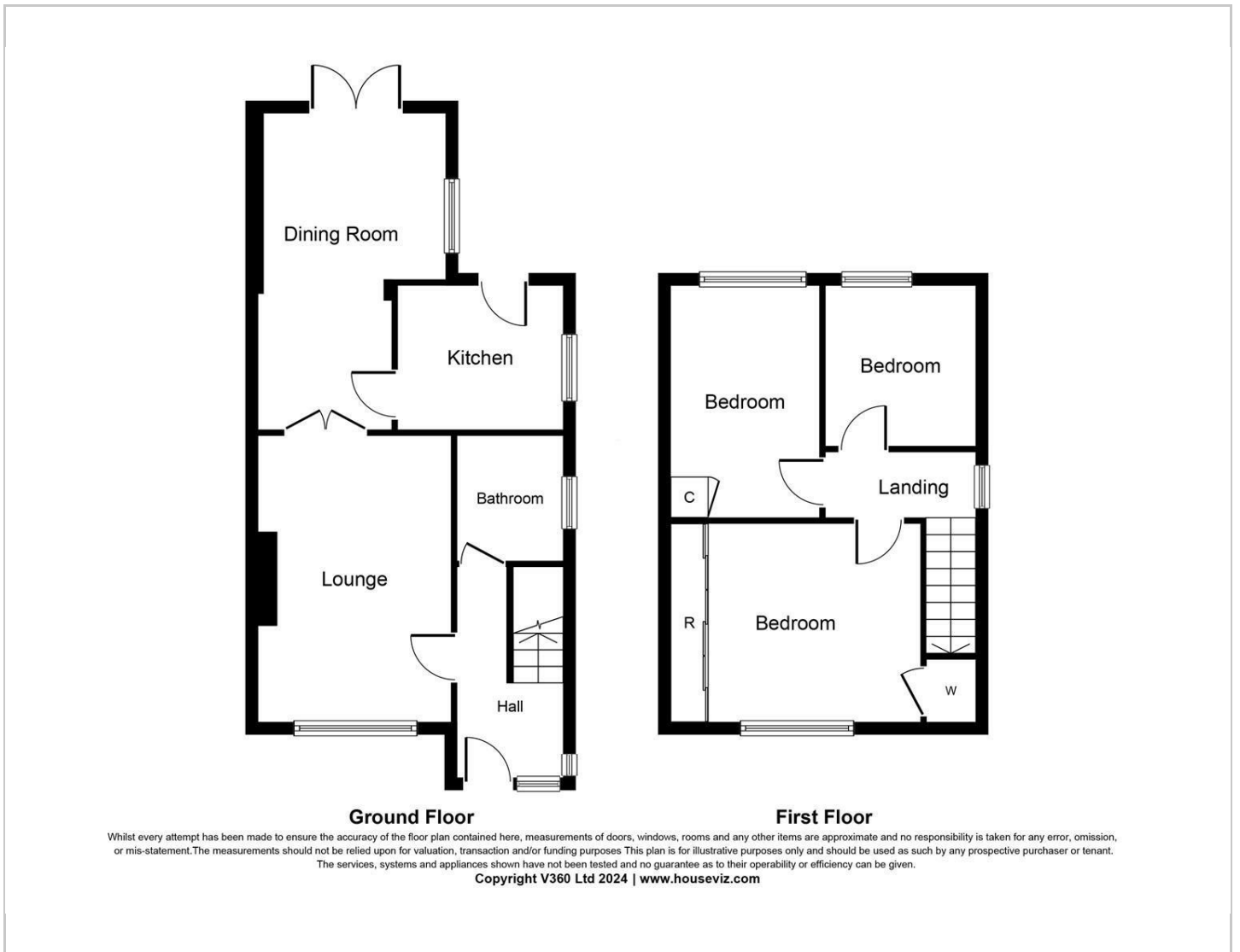
Map



EPC graph



Floor Plan



VIEWING

Please contact us on 01642 615657 if you wish to arrange a viewing or would like more information.

These particulars, whilst believed to be accurate are set out as a general outline only for guidance and do not constitute any part of an offer or contract. Intending purchasers should not rely on them as statements of representation of fact, but must satisfy themselves by inspection or otherwise as to their accuracy. No person in this firm's employment has the authority to make or give any representation or warranty in respect of the property.