



Malton Drive, Bishopsgarth, Stockton-On-Tees, TS19 8TU

Offered for sale with NO ONWARD CHAIN, this semi-detached bungalow presents an opportunity in the sought-after residential area of Bishopsgarth. Conveniently positioned, it provides easy access to local shops, amenities and bus routes.

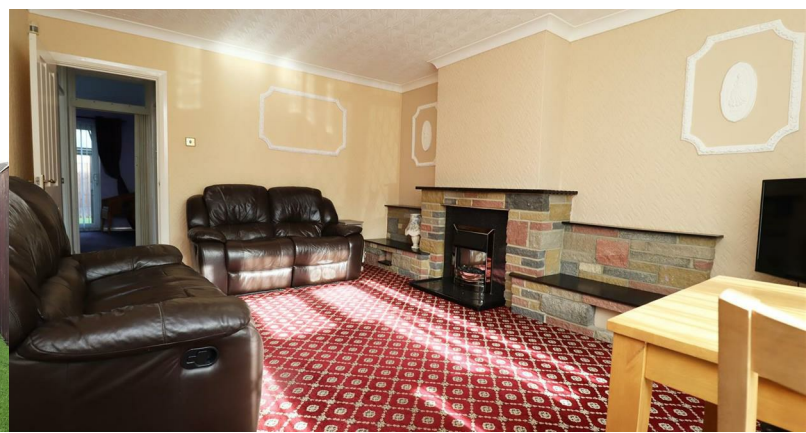
The bungalow comprises inviting entrance hall, lounge with gas fireplace, two double bedrooms, one which comes complete with built-in wardrobes, wet room, and a bright conservatory, leading to the private rear garden with low-maintenance astroturf.

To the front, the garage, fitted with power and electrics, providing added convenience and functionality and block-paved driveway ensure ample parking space for a number of vehicles.

With its convenient location and array of features, this property presents an excellent opportunity for those seeking a comfortable home in a desirable neighborhood. Don't hesitate, schedule your viewing today!



Asking Price £140,000



Malton Drive, Bishopsgarth, Stockton-On-Tees, TS19 8TU

HALL

KITCHEN

10'10" x 7'1" (3.30m x 2.16m)

LOUNGE

16" x 12'2" (4.88m x 3.71m)

BEDROOM ONE

9" x 13'3" (2.74m x 4.04m)

BEDROOM TWO

10'5" x 8'9" (3.18m x 2.67m)

WET ROOM

7'3" x 6" (2.21m x 1.83m)

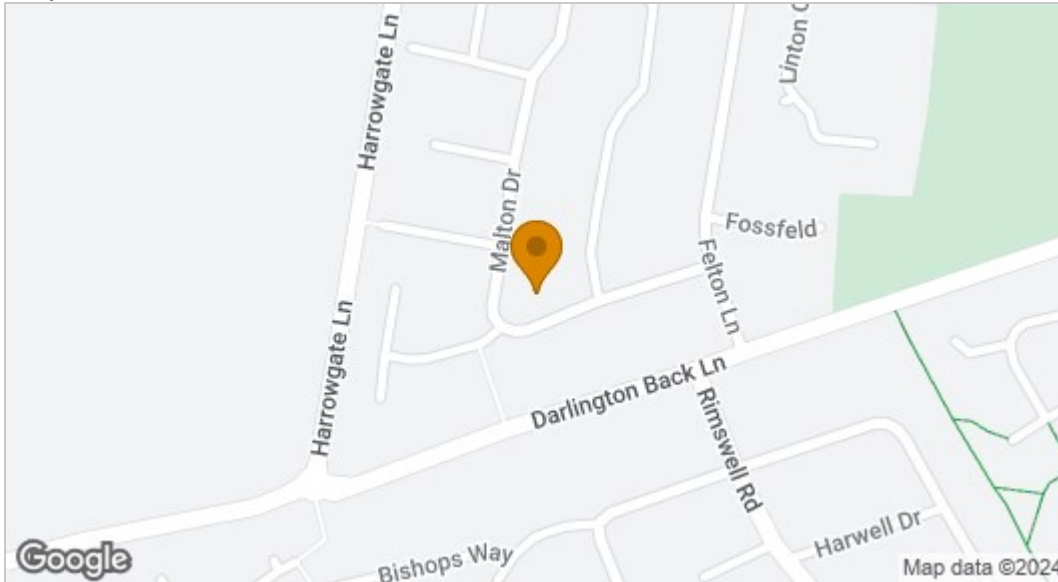
CONSERVATORY

10'3" x 8'4" (3.12m x 2.54m)

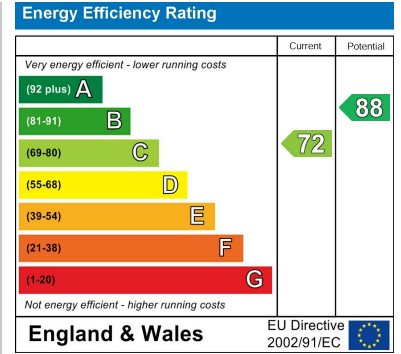




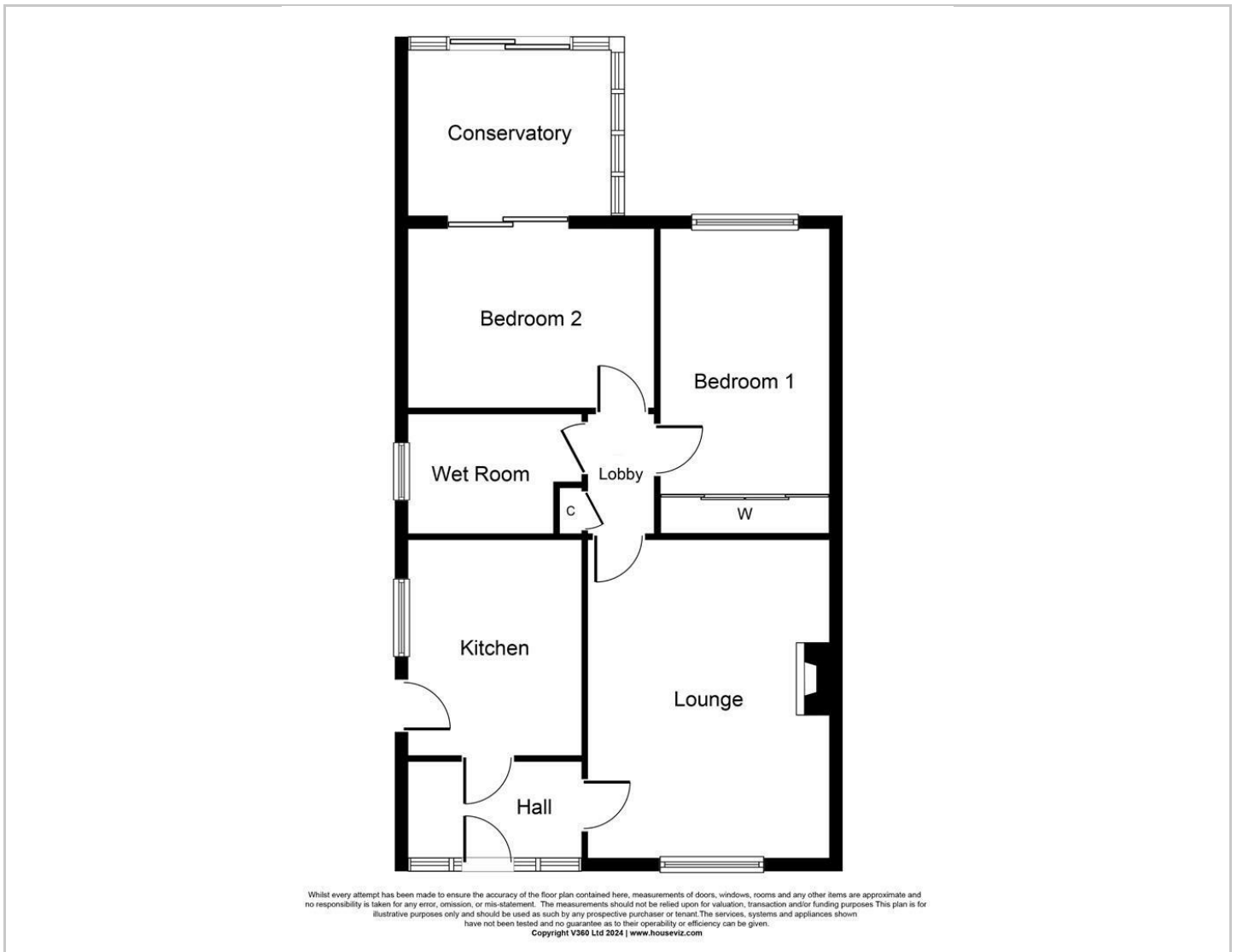
Map



EPC graph



Floor Plan



VIEWING

Please contact us on 01642 615657 if you wish to arrange a viewing or would like more information.

These particulars, whilst believed to be accurate are set out as a general outline only for guidance and do not constitute any part of an offer or contract. Intending purchasers should not rely on them as statements of representation of fact, but must satisfy themselves by inspection or otherwise as to their accuracy. No person in this firm's employment has the authority to make or give any representation or warranty in respect of the property.

17 Bishop Street, Stockton on Tees, TS18 1SY

Tel: 01642 615657 Email: stockton@gowlandwhite.co.uk <https://www.gowlandwhite.co.uk/>