



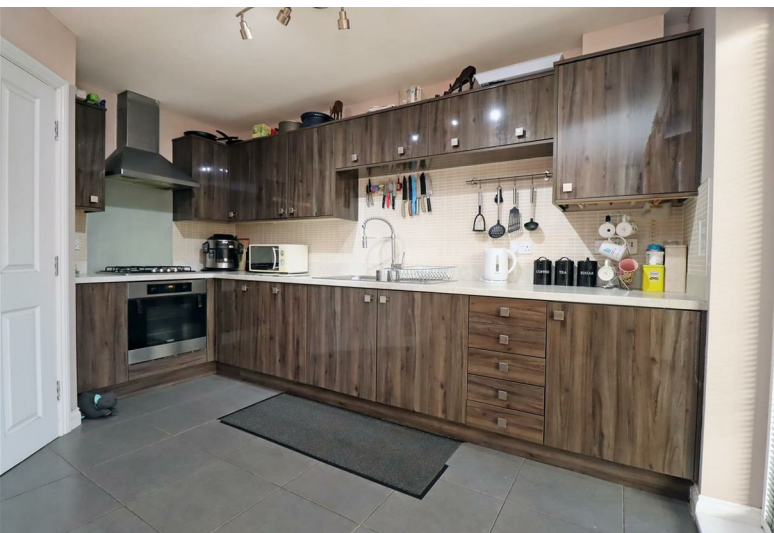
## Corona Court, Queensgate, Stockton-On-Tees, TS18 3UW

NO ONWARD CHAIN! This town house built by Bellway Homes is situated on the popular Queensgate development which is located between Hartburn and Yarm and allows for easy access to local road and transport links. The spacious accommodation is set over three floors and provides flexible family living.

The ground floor comprises; entrance hall, ground floor WC and modern kitchen/dining room with integrated fridge, oven, hob, dishwasher and washing machine. On the first floor is a lounge and the master bedroom with EN-SUITE shower room. Located on the second floor are two further double bedrooms and a family bathroom with shower over bath.

Externally, to the front is a small, low maintenance garden and driveway and to the rear, an enclosed garden with lawn and decking area, with access to the garage.

Offers In The Region Of £180,000



# Corona Court, Queensgate, Stockton-On-Tees, TS18 3UW

HALL

KITCHEN

12'9" x 14'9" (3.89m x 4.50m )

WC

5'5" x 3'4" (1.65m x 1.02m )

LANDING

LOUNGE

11'2" x 16'5" (3.40m x 5.00m)

BEDROOM ONE

10" x 11'6" (3.05m x 3.51m)

ENSUITE

7'9" x 4'7" (2.36m x 1.40m)

LANDING

BEDROOM TWO

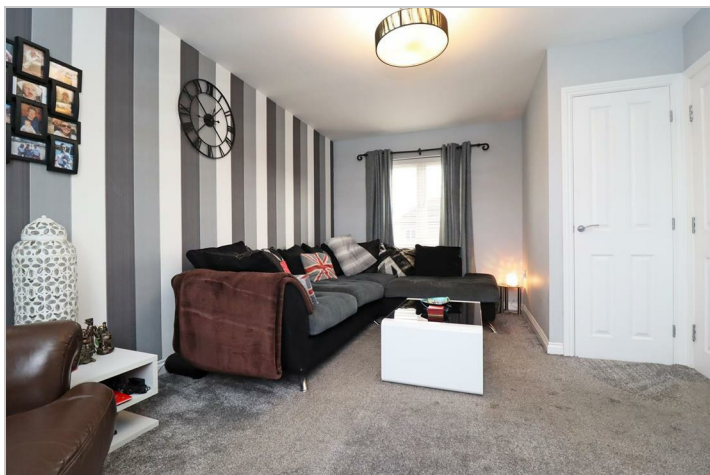
8'6" x 14'1" (2.59m x 4.29m)

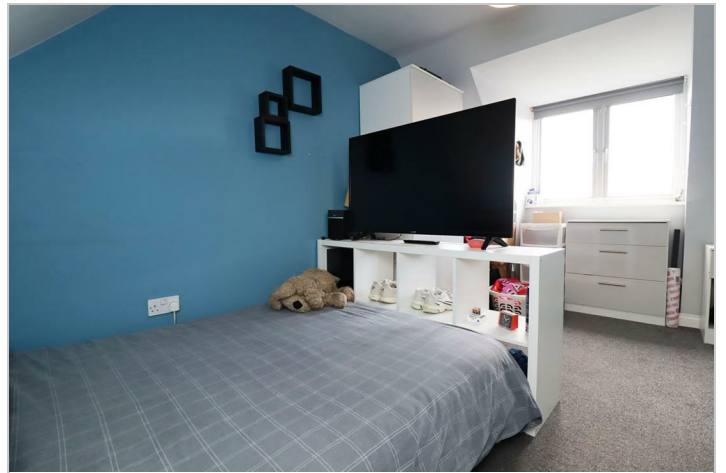
BEDROOM THREE

8'3" x 14'1" (2.51m x 4.29m)

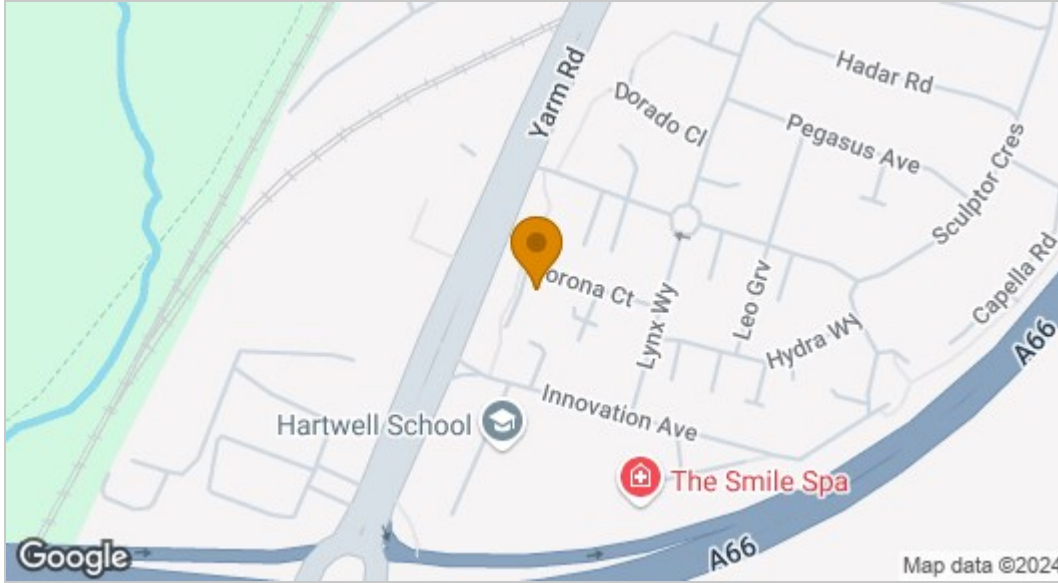
BATHROOM

5'6" x 7'10" (1.68m x 2.39m)

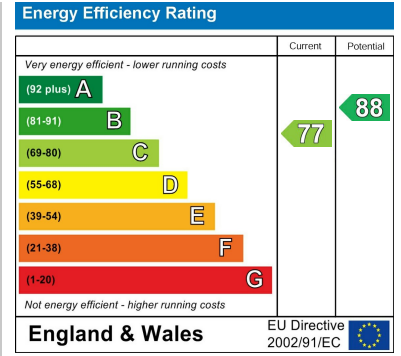




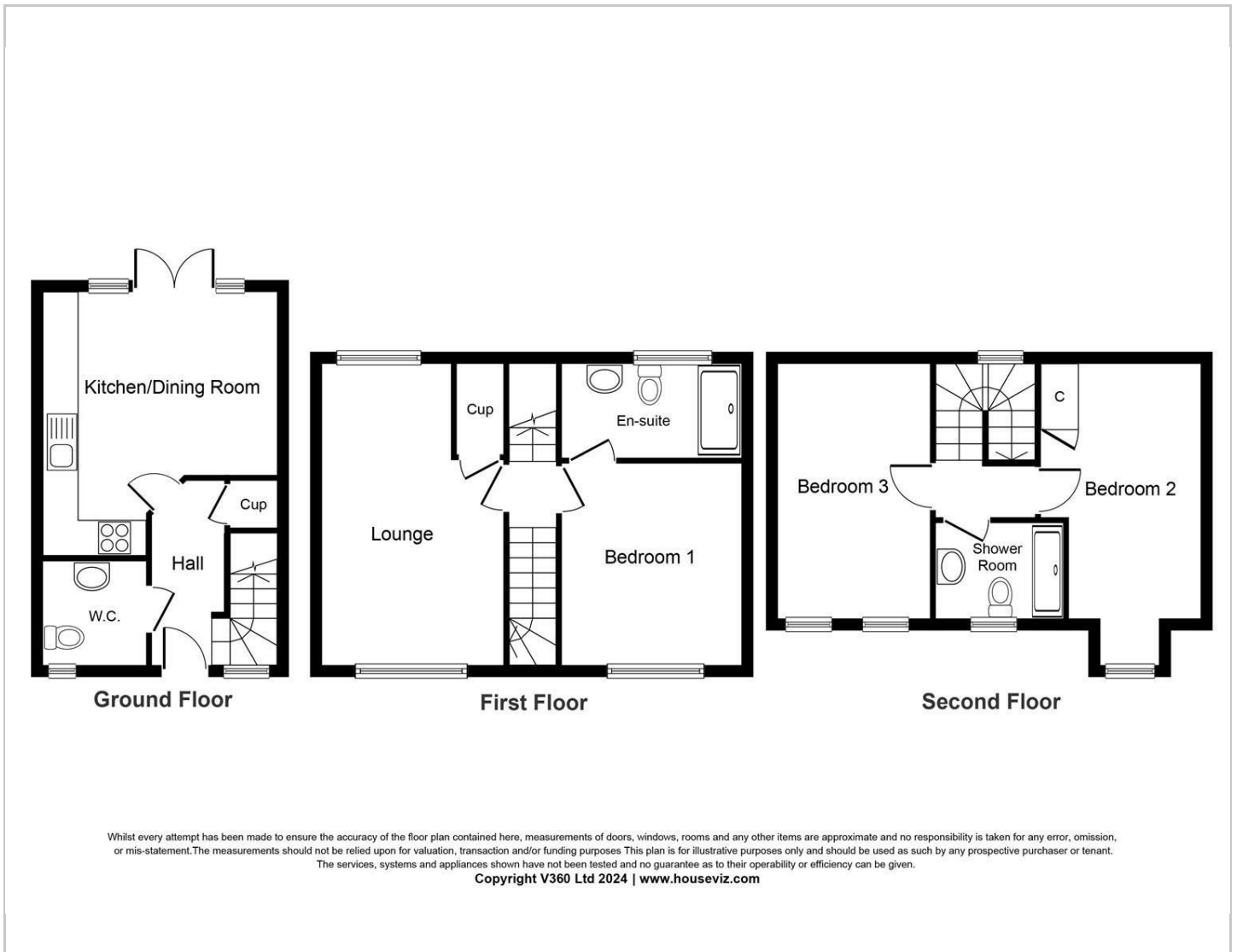
## Map



## EPC graph



## Floor Plan



## VIEWING

Please contact us on 01642 615657 if you wish to arrange a viewing or would like more information.

These particulars, whilst believed to be accurate are set out as a general outline only for guidance and do not constitute any part of an offer or contract. Intending purchasers should not rely on them as statements of representation of fact, but must satisfy themselves by inspection or otherwise as to their accuracy. No person in this firm's employment has the authority to make or give any representation or warranty in respect of the property.

17 Bishop Street, Stockton on Tees, TS18 1SY

Tel: 01642 615657 Email: [stockton@gowlandwhite.co.uk](mailto:stockton@gowlandwhite.co.uk) <https://www.gowlandwhite.co.uk/>