



Samuel Street, Stockton-On-Tees, TS19 0BU

Detached house, originally 'The Old Stable' offered for sale with the benefit of NO CHAIN! An ideal INVESTMENT OPPORTUNITY or purchase for a first time buyer, this property is conveniently situated within walking distance of Stockton Town Centre, local schools, shops, amenities and bus routes.

To the ground floor is a lounge with open spindle staircase to the first floor and a kitchen fitted with a range of units and access door to the rear. Located on the first floor are two double bedrooms and a bathroom/wc. The property is uPVC double glazed, warmed via a combi gas central heating system, and has a security alarm installed. Outside there is a parking space along with single garage, ideal for addition storage or further parking.

Gowland White are a SALES and LETTINGS Agent, please contact us and obtain further information or advice regarding all aspects of buying and letting.

Offers Over £60,000



Samuel Street, Stockton-On-Tees, TS19 0BU

LOUNGE

12'4" x 14'11" (3.76 x 4.55)

KITCHEN

7'4" x 11'0" (2.24 x 3.35)

FIRST FLOOR LANDING

BEDROOM ONE

15'1" x 7'11" (4.60 x 2.41)

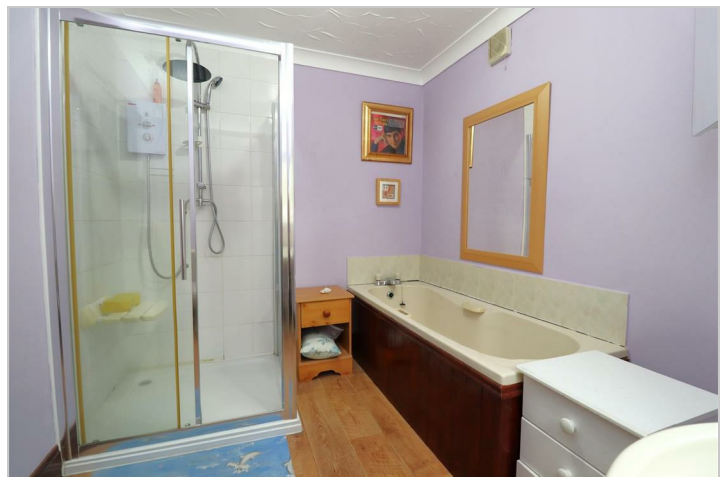
BEDROOM TWO

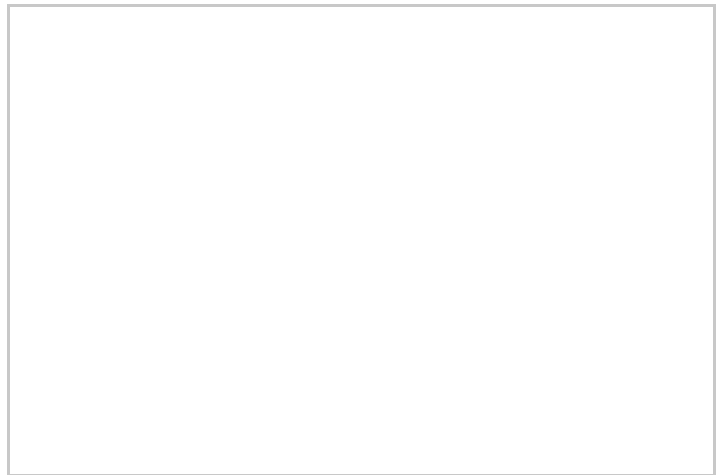
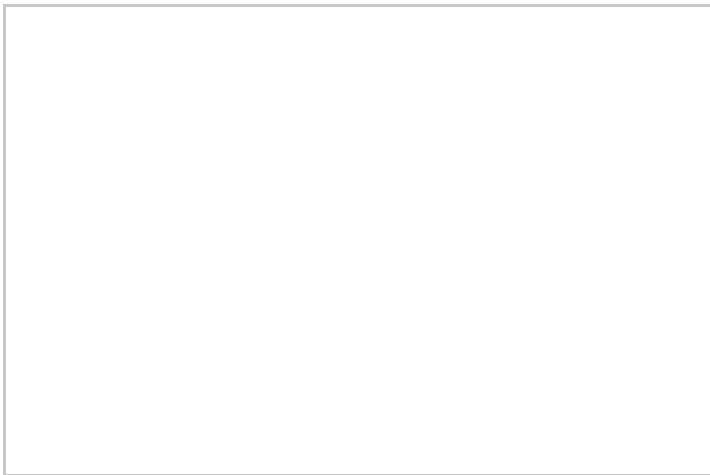
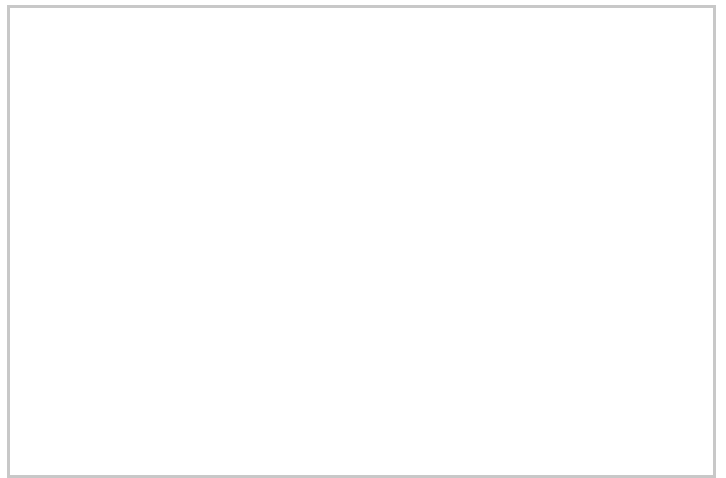
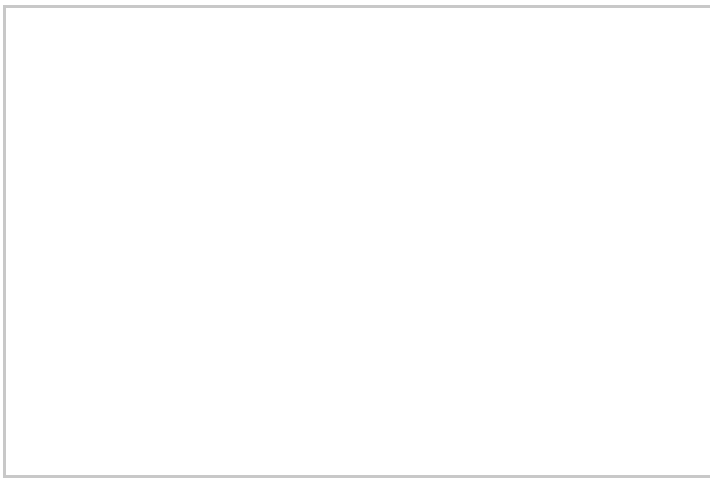
11'10" x 12'5" (3.61 x 3.78)

BATHROOM

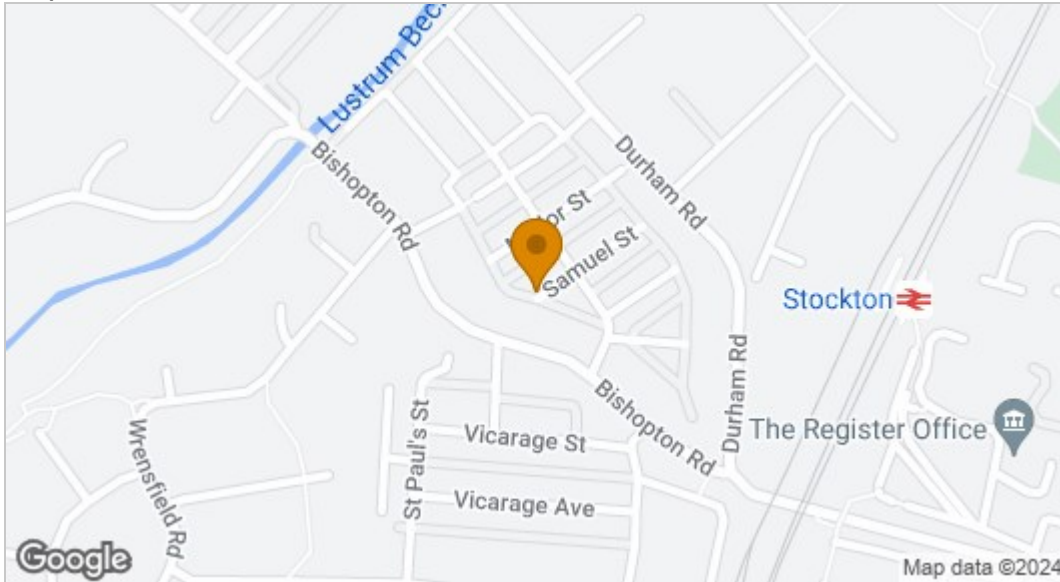
7'4" x 10'8" (2.24 x 3.25)

GARAGE

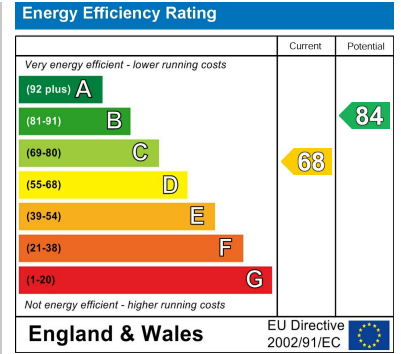




Map



EPC graph



Floor Plan



VIEWING

Please contact us on 01642 615657 if you wish to arrange a viewing or would like more information.

These particulars, whilst believed to be accurate are set out as a general outline only for guidance and do not constitute any part of an offer or contract. Intending purchasers should not rely on them as statements of representation of fact, but must satisfy themselves by inspection or otherwise as to their accuracy. No person in this firm's employment has the authority to make or give any representation or warranty in respect of the property.

17 Bishop Street, Stockton on Tees, TS18 1SY

Tel: 01642 615657 Email: stockton@gowlandwhite.co.uk <https://www.gowlandwhite.co.uk/>