



Ramsey Crescent, Yarm, TS15 9DZ

This well presented 3 bedroom semi detached house is set within a popular Yarm location close to highly regarded schools, including Layfield Primary School and Conyers Secondary School. The property is well placed for a range of amenities and within walking distance of Yarm High Street which offers a fantastic range of independent cafes, bars, restaurants and shops, along with having ease of access to Yarm Railway Station.

Ground floor accommodation comprises lounge and an open plan kitchen/dining room is situated to the rear fitted with a range of high gloss units incorporating integrated oven and gas hob and breakfast bar seating for 2 people. On the first floor are three bedrooms, master bedroom benefitting from built in wardrobes, and a modern family bathroom.

Externally to the front is a double width driveway and to the rear, an extensive SOUTH FACING garden being mainly laid to lawn, with a patio area and brick built storage.

Offers In The Region Of £160,000



Ramsey Crescent, Yarm, TS15 9DZ

HALL

LOUNGE

11'10" x 13'3" (3.61m x 4.04m)

KITCHEN/DINING ROOM

18'2" x 8'6" (5.54m x 2.59m)

LANDING

BEDROOM ONE

14'1" x 8'7" (4.29m x 2.62m)

BEDROOM TWO

10'4" x 13'4" (3.15m x 4.06m)

BEDROOM THREE

9'7" x 8" (2.92m x 2.44m)

BATHROOM/WC

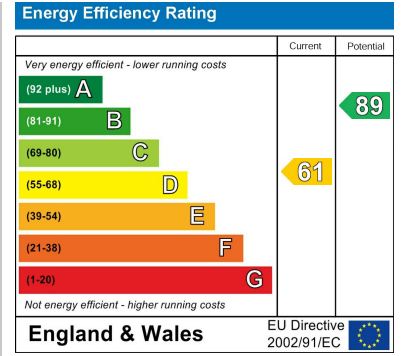
5'6" x 7'10" (1.68m x 2.39m)



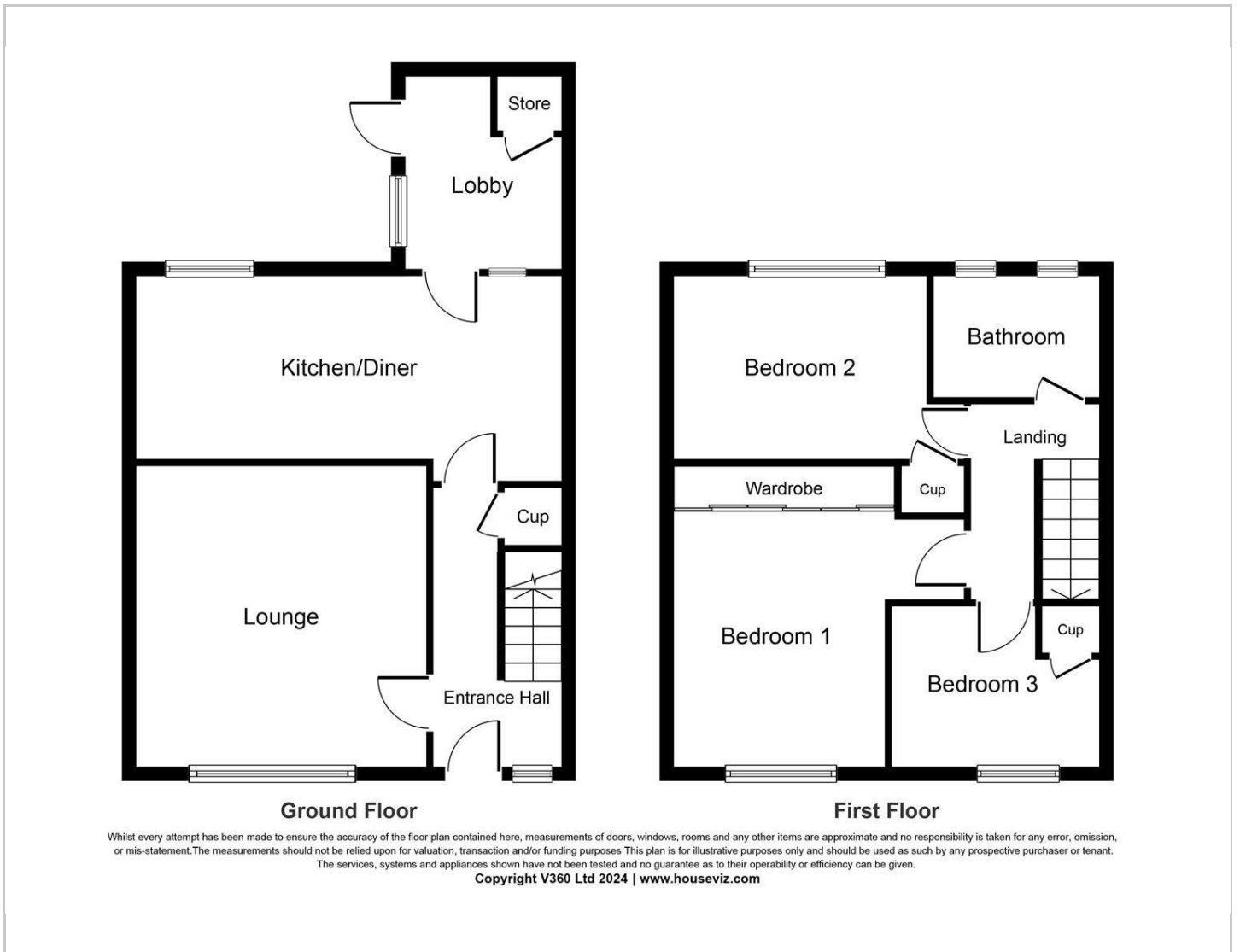
Map



EPC graph



Floor Plan



VIEWING

Please contact us on 01642 248248 if you wish to arrange a viewing or would like more information.

These particulars, whilst believed to be accurate are set out as a general outline only for guidance and do not constitute any part of an offer or contract. Intending purchasers should not rely on them as statements of representation of fact, but must satisfy themselves by inspection or otherwise as to their accuracy. No person in this firm's employment has the authority to make or give any representation or warranty in respect of the property.