



Fortrose Close, Eaglescliffe, TS16 9HD

Situated in a cul-de-sac within the popular Sunningdale area of Eaglescliffe, this extended three bedroom home with garage is offered to the market with no onward chain.

The accommodation comprises of a hallway that opens into a generously sized lounge, featuring an electric fire and fireplace. French doors connect to the dining room, where sliding doors lead directly out to the rear garden. The extended kitchen/breakfast room is well-appointed with a range of fitted units and includes a breakfast bar. There is space for laundry appliances, a handy storage cupboard, and access to the garden from the kitchen.

Upstairs, you'll find three double bedrooms, one of which benefits from fitted wardrobes. The family bathroom includes a shower over the bath. The home is warmed by gas central heating and benefits from double glazing throughout for added comfort and efficiency.

Outside, the front of the property features a lawned garden and a driveway providing off-street parking and access to the garage. The rear garden has been designed for low maintenance, with a mix of patio, gravel, and a lawn area.

Ideally located for families and commuters alike, the home is within easy reach of well regarded primary and secondary schools, local shops and amenities on Sunningdale Drive, and public transport links. Eaglescliffe Train Station and the A66 are nearby, ensuring convenient travel across the North-East, while Yarm High Street, with its array of cafés, boutiques, and restaurants, is just a short drive away.

Offers Over £190,000



Fortrose Close, Eaglescliffe, TS16 9HD

HALL

LOUNGE

22'3" x 11'8" (6.78m x 3.56m)

DINING ROOM

9'8" x 8' (2.95m x 2.44m)

KITCHEN

16'3" x 11'2" (4.95m x 3.40m)

LANDING

BEDROOM ONE

12' x 10'6" (3.66m x 3.20m)

BEDROOM TWO

10'9" x 10'3" (3.28m x 3.12m)

BEDROOM THREE

9'7" x 8'10" (2.92m x 2.69m)

BATHROOM

9'6" 7'6" (2.90m 2.29m)

AML PROCEDURE

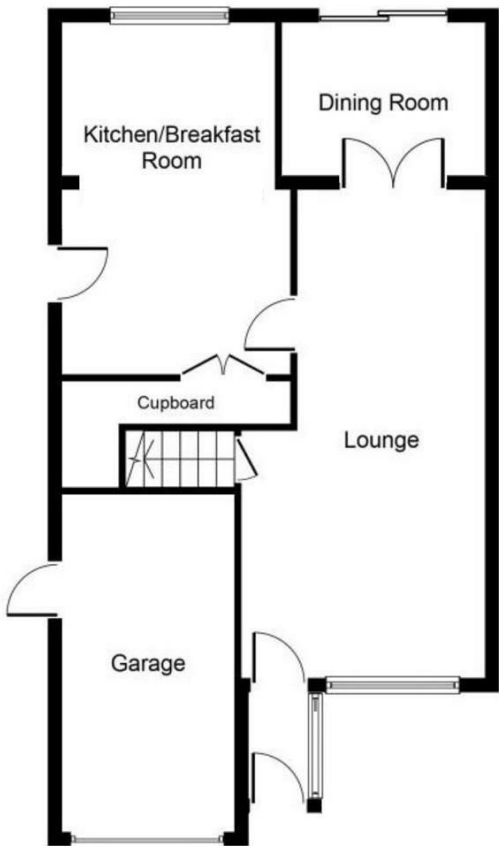
To comply with anti-money laundering regulations (AML) all estate agents must be registered with HMRC. Gowland White complies with this legislation by using an online AML risk assessment company, approved by the UK Government. Please note that all buyers are charged a fee of £36.00 (inc. VAT), for each buyer, to cover this process. These fees are payable before we can progress an agreed sale.



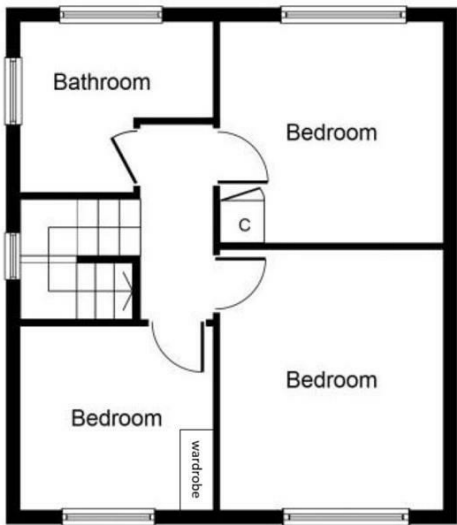
Fortrose Close, Eaglescliffe, TS16 9HD



Fortrose Close, Eaglescliffe, TS16 9HD



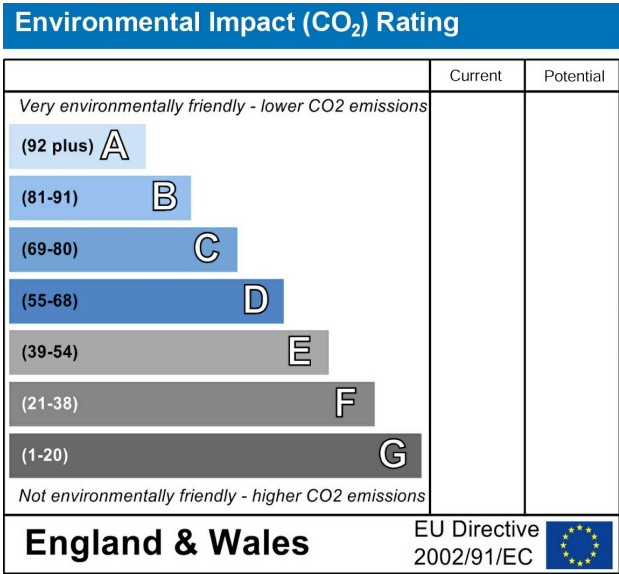
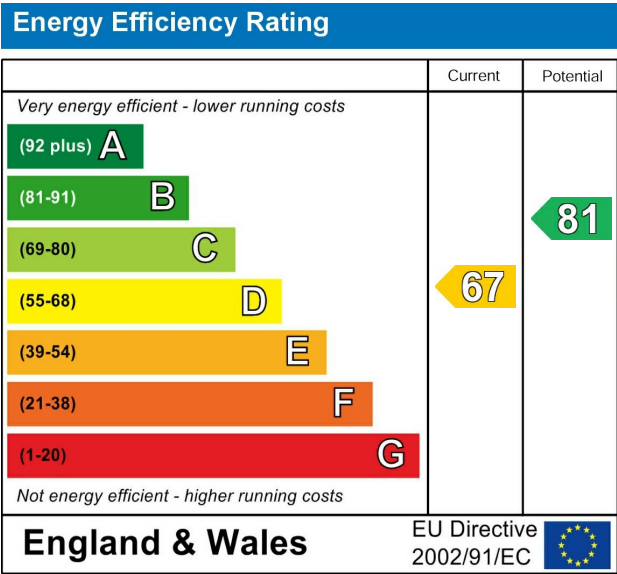
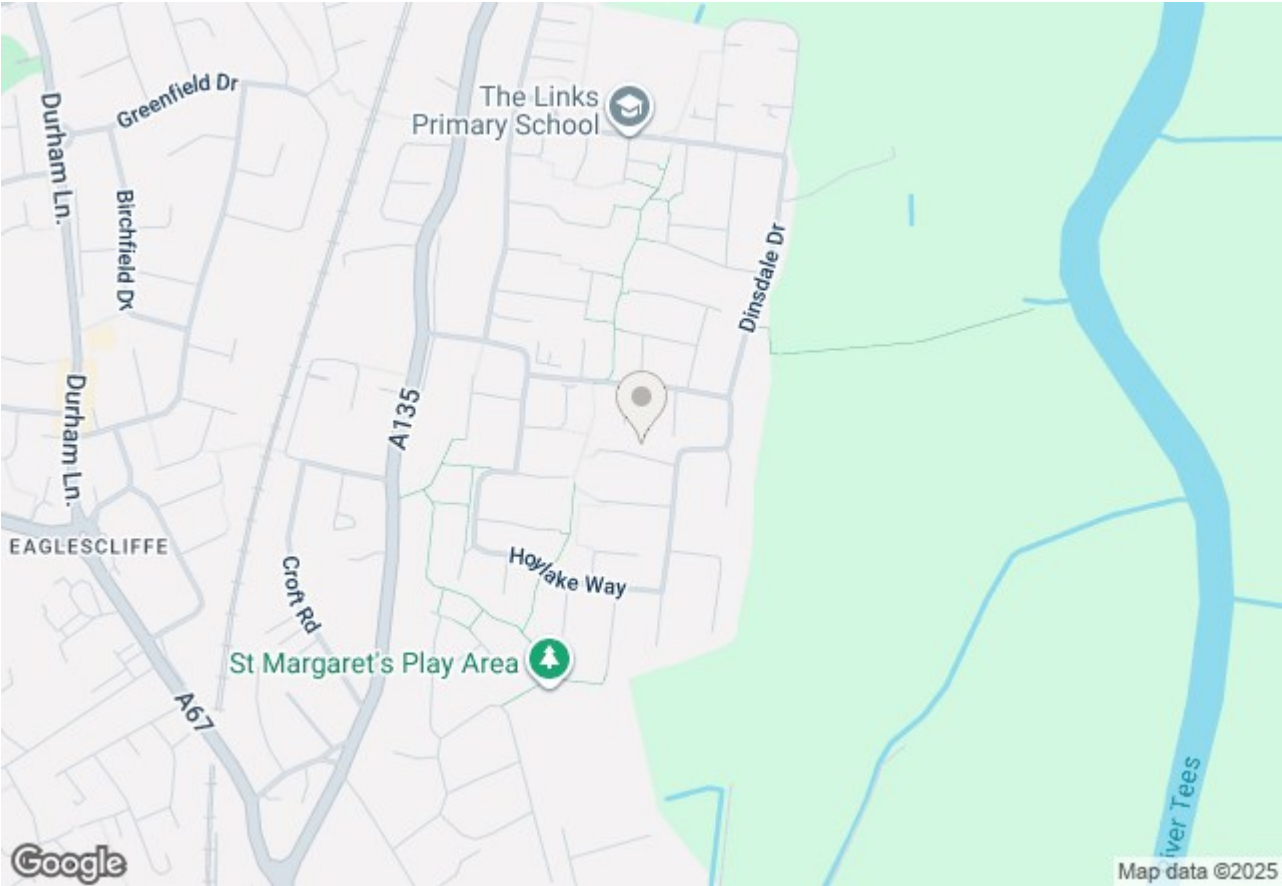
Ground Floor



First Floor

Whilst every attempt has been made to ensure the accuracy of the floor plan contained here, measurements of doors, windows, rooms and any other items are approximate and no responsibility is taken for any error, omission, or mis-statement. This plan is for illustrative purposes only and should be used as such by any prospective purchaser or tenant. The services, systems and appliances shown have not been tested and no guarantee as to their operability or efficiency can be given.
Copyright V360 Ltd 2019 | www.houseviz.com

Fortrose Close, Eaglescliffe, TS16 9HD



VIEWING
Please contact us on 01642 248248 if you wish to arrange a viewing or would like more information.

These particulars, whilst believed to be accurate are set out as a general outline only for guidance and do not constitute any part of an offer or contract. Intending purchasers should not rely on them as statements of representation of fact, but must satisfy themselves by inspection or otherwise as to their accuracy. No person in this firms employment has the authority to make or give any representation or warranty in respect of the property.

Fortrose Close, Eaglescliffe, TS16 9HD

101 High Street, Yarm, TS15 9BB
yarm@gowlandwhite.co.uk

Tel: 01642 248248