



Allerton View, Yarm, Stockton-On-Tees, TS15 9FH

This three storey, three bedroom semi-detached house with a garage, built by Taylor Wimpey in 2016, is located in the popular Morley Carr Farm development, making it an excellent option for families and professionals.

On the ground floor, the hallway leads to an open plan living area, fully tiled for a clean, seamless look. The contemporary kitchen/dining space includes shaker-style units, an integrated oven and gas hob, and room for a dining table. French doors from the lounge open to a west-facing rear garden. A convenient downstairs W/C is also available.

The top floor features the master bedroom, equipped with built-in wardrobes and an en-suite shower room with a large shower cubicle. The first floor includes two additional bedrooms, one with built-in wardrobes and storage, as well as a modern family bathroom.

This property also benefits from double glazed windows and a Hive controlled gas central heating system.

Outside, the front of the property features a lawn and mature shrubbery, while the rear offers a driveway for at least two cars leading to the garage, along with a fenced low-maintenance garden that includes artificial lawn, a patio, a raised border, and a pergola.

Located in the highly sought after area of Yarm, this property is conveniently close to top performing schools, shops, Yarm Medical Centre, and Yarm Train Station. It also offers excellent access to the vibrant Yarm High Street, renowned for its array of bars, restaurants, cafes, and relaxing riverside walks.

£250,000



Allerton View, Yarm, Stockton-On-Tees, TS15 9

HALL

KITCHEN/DINING ROOM
10'5" x 16'5" (3.18m x 5.00m)

LOUNGE
13'10" x 11'3" (4.22m x 3.43m)

CLOAKS/WC

LANDING

BEDROOM TWO
11'6" x 13'11" (3.51m x 4.24m)

BEDROOM THREE
7'1" x 10'7" (2.16m x 3.23m)

BATHROOM
7'2" x 6'8" (2.18m x 2.03m)

SECOND FLOOR LANDING

MASTER BEDROOM
18'1" x 10'5" (5.51m x 3.18m)

ENSUITE
8'7" x 4'7" (2.62m x 1.4m)



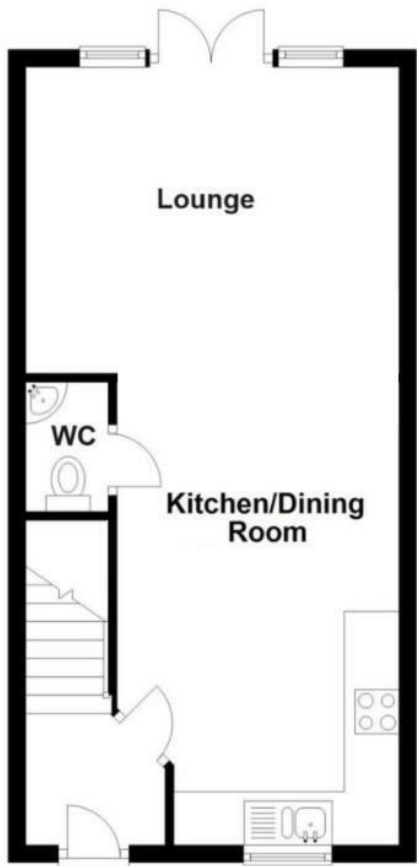
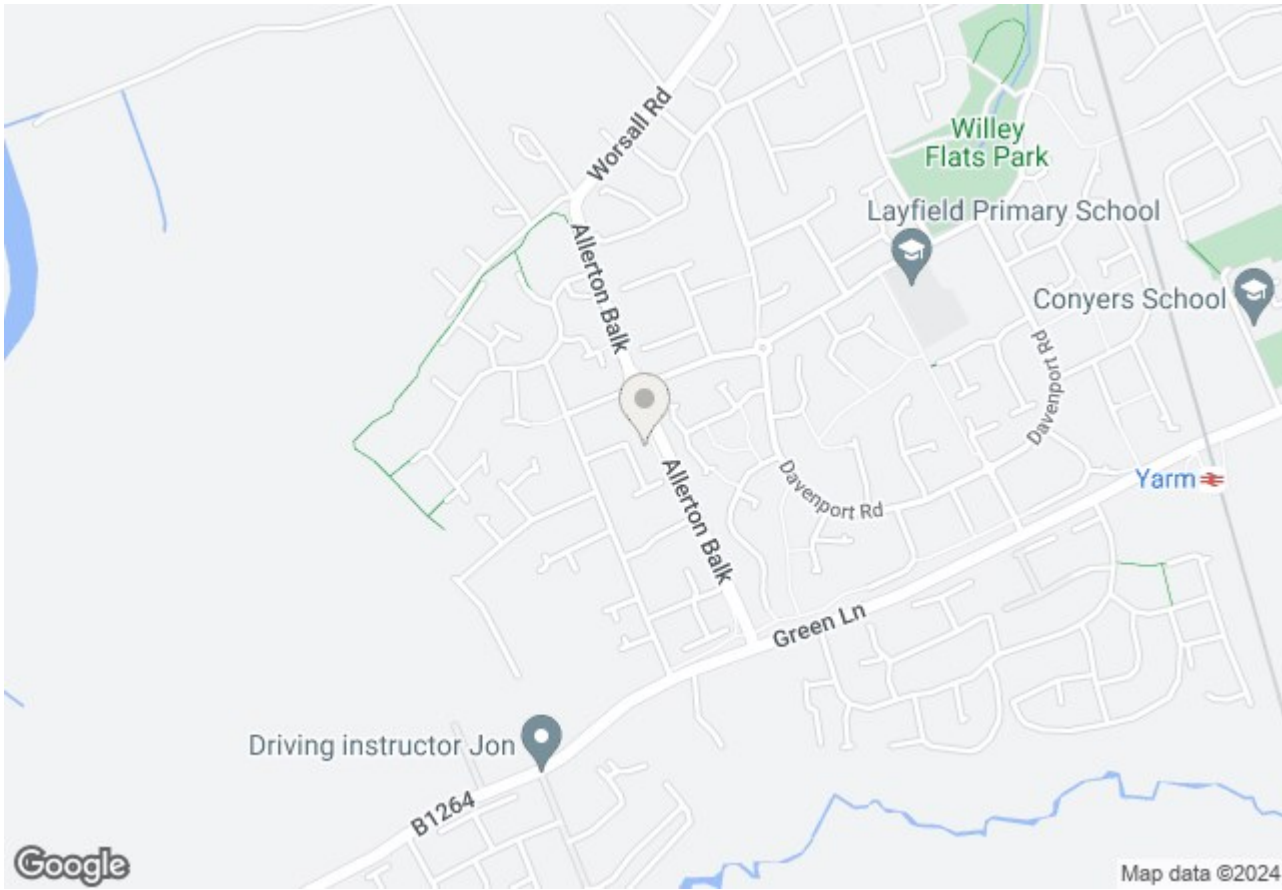
Allerton View, Yarm, Stockton-On-Tees, TS15 9FH



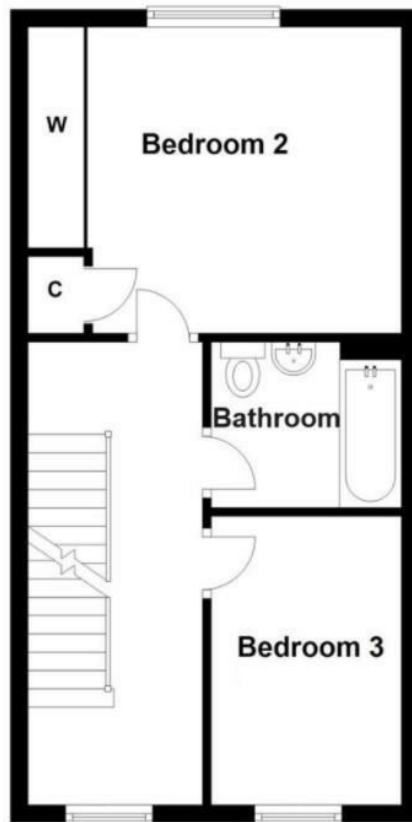
Allerton View, Yarm, Stockton-On-Tees, TS15 9FH



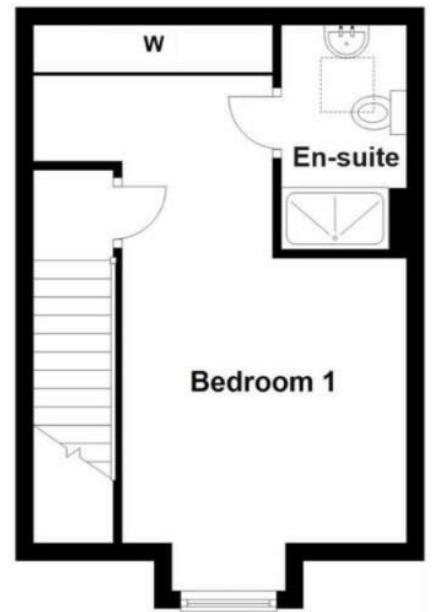
Allerton View, Yarm, Stockton-On-Tees, TS15 9FH



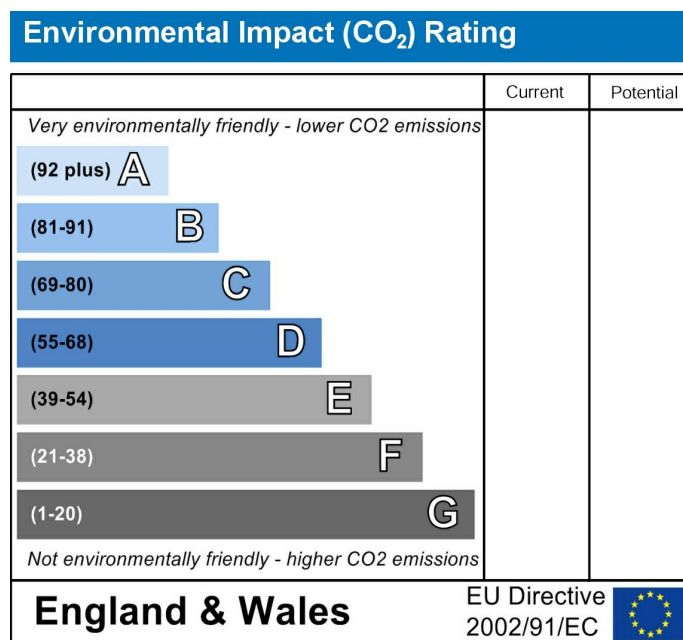
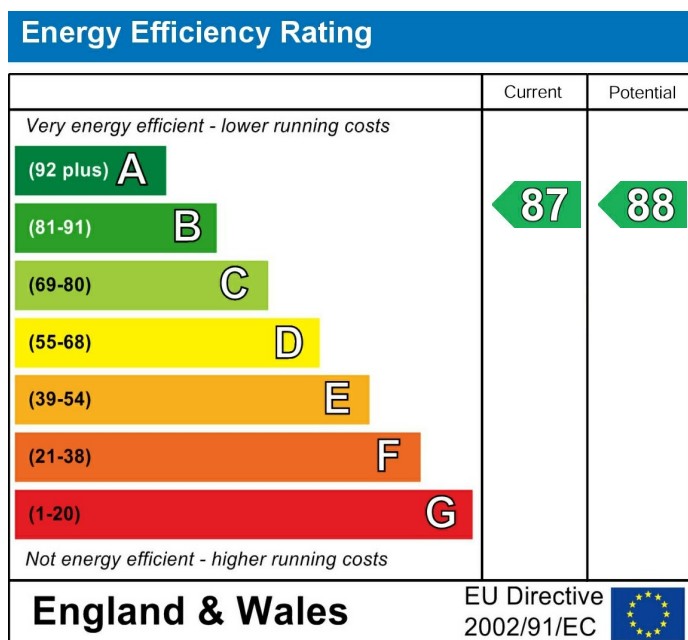
Ground Floor



First Floor



Second Floor



VIEWING

Please contact us on 01642 248248 if you wish to arrange a viewing or would like more information.

These particulars, whilst believed to be accurate are set out as a general outline only for guidance and do not constitute any part of an offer or contract. Intending purchasers should not rely on them as statements of representation of fact, but must satisfy themselves by inspection or otherwise as to their accuracy. No person in this firms employment has the authority to make or give any representation or warranty in respect of the property.