



Holwick Oval, Eaglescliffe, Stockton-on-Tees, TS16 0FJ

Located in an enviable position overlooking the green within the newly built "Coatham Gardens" development, is this four bedroom detached house with garage constructed in 2022 to the sought after "Wortham" design.

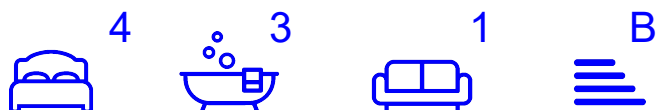
This thoughtfully designed modern property comprises of a hallway leading to a spacious lounge and open plan kitchen/dining room offering a range of contemporary units, softly lit with under cupboard lights, and upgraded appliances including dishwasher, double oven, 5 ring gas hob and fridge/freezer. The luxury vinyl flooring flows into the dining area with French doors leading out to the rear garden. Additionally, there's a utility room and W/C for added convenience.

To the first floor are four well-appointed double bedrooms, with the master bedroom featuring an en-suite shower room and fitted wardrobes. The second bedroom also has its own en-suite, while the rest of the floor is serviced by a modern family bathroom. This property also benefits from gas central heating, UPVC double glazing, NHBC warranty and a B-rated energy efficiency grading.

Externally, to the front is a small lawned garden, planted with shrubbery, and a double width driveway with electric charging point, providing off road parking for two cars. At the rear is a fence enclosed garden with patio and lawn.

Being well positioned to maximise the benefits of easy access into Yarm, only a short commute into Middlesbrough and Darlington via the A66 or Allens West Train Station and well positioned for the catchment of highly regarded schools and amenities, this property will prove to be a popular family home with many potential buyers.

Offers Over £365,000



Holwick Oval, Eaglescliffe, Stockton-on-Tees, TS16 0FJ

HALL

LOUNGE

18'11 x 11'10 (5.77m x 3.61m)

KITCHEN/DINING ROOM

21'3 x 11' (6.48m x 3.35m)

UTILITY

7'7 x 5 (2.31m x 1.52m)

W/C

7'8 x 4'9 (2.34m x 1.45m)

LANDING

MASTER BEDROOM

15'9 x 11'10 (4.80m x 3.61m)

EN-SUITE

6'7 x 4'5 (2.01m x 1.35m)

BEDROOM TWO

13'8 x 10'3 (4.17m x 3.12m)

EN-SUITE

10'0 x 3'7 (3.05m x 1.09m)

BEDROOM THREE

10'0 x 13'9 (3.05m x 4.19m)

BEDROOM FOUR

10'1 x 11'4 (3.07m x 3.45m)

BATHROOM

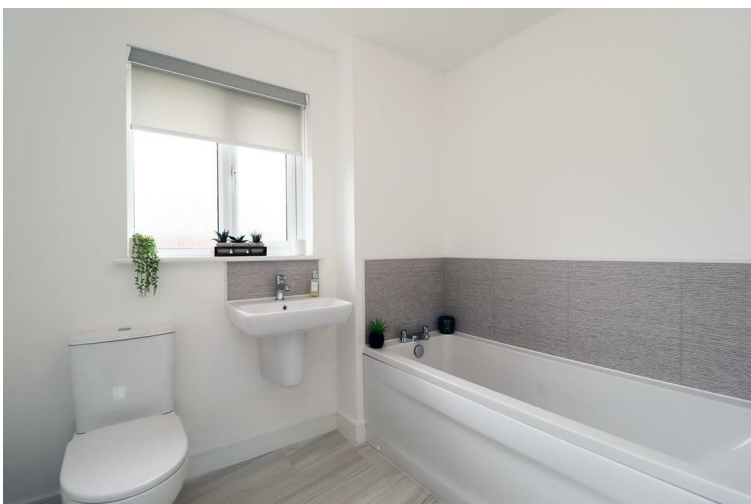
7'4 x 6'2 (2.24m x 1.88m)



Holwick Oval, Eaglescliffe, Stockton-on-Tees, TS16 0FJ



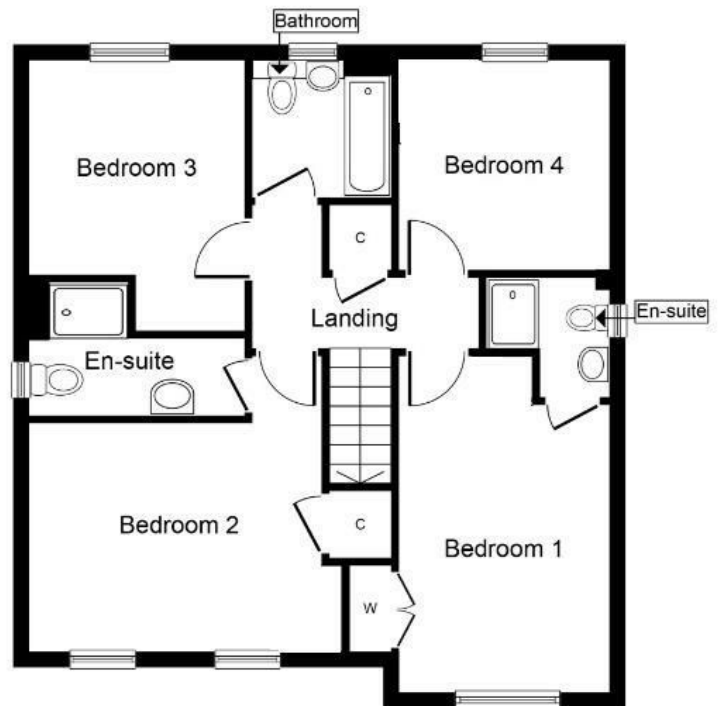
Holwick Oval, Eaglescliffe, Stockton-on-Tees, TS16 0FJ



Holwick Oval, Eaglescliffe, Stockton-on-Tees, TS16 0FJ



Ground Floor

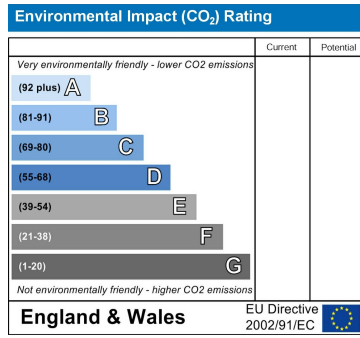
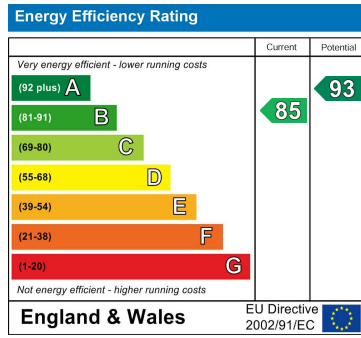


First Floor

Whilst every attempt has been made to ensure the accuracy of the floor plan contained here, measurements of doors, windows, rooms and any other items are approximate and no responsibility is taken for any error, omission, or mis-statement. The measurements should not be relied upon for valuation, transaction and/or funding purposes. This plan is for illustrative purposes only and should be used as such by any prospective purchaser or tenant. The services, systems and appliances shown have not been tested and no guarantee as to their operability or efficiency can be given.

Copyright V360 Ltd 2024 | www.houseviz.com

Holwick Oval, Eaglescliffe, Stockton-on-Tees, TS16 0FJ



VIEWING

Please contact us on 01642 248248 if you wish to arrange a viewing or would like more information.

These particulars, whilst believed to be accurate are set out as a general outline only for guidance and do not constitute any part of an offer or contract. Intending purchasers should not rely on them as statements of representation of fact, but must satisfy themselves by inspection or otherwise as to their accuracy. No person in this firm's employment has the authority to make or give any representation or warranty in respect of the property.