



Yarm Road, Eaglescliffe, Stockton-On-Tees, TS16 0DQ

Immaculately presented FIVE BEDROOM character Victorian terrace home in a sought after location. There are highly regarded primary, secondary and private schools close by and for the golf players, Eaglescliffe Golf Club is directly across the road. The cobbled High Street of Yarm is less than a mile from the property, better known for the quality of its boutique shops, wide variety of pubs, cafes and restaurants.

Internally the accommodation provides a vestibule, hall, lounge, dining room, kitchen/dining room with integrated appliances and island, convenient W.C/utility room and additional reception room to the rear with access to the rear garden. There are five first floor bedrooms, a shower room, a separate WC, and a modern family bathroom. The property proudly showcases charming period features throughout, while enjoying the benefits of modern comforts such as double glazing and gas central heating.

Externally, the property features an attractive front garden and a low-maintenance westerly facing rear garden. A rear gate opens to a convenient block paved off street parking space for one vehicle.

A full internal inspection is highly recommended to appreciate the standard and quality of this wonderful property.

Asking Price £490,000



Yarm Road, Eaglescliffe, Stockton-On-Tees, TS16 0DQ

HALL

LOUNGE

14'4" x 18'9" (4.37m x 5.72m)

DINING ROOM

14'4" x 12'10" (4.37m x 3.91m)

KITCHEN/DINING

18'11" x 11'6" (5.77m x 3.51m)

RECEPTION ROOM

11'7" x 11'6" (3.53m x 3.51m)

W.C/UTILITY

7' x 5'4" (2.13m x 1.63m)

LANDING

BEDROOM ONE

14'9" x 12'11" (4.50m x 3.94m)

BEDROOM TWO

14'9" x 11'7" (4.50m x 3.53m)

BEDROOM THREE

11'6" x 11' (3.51m x 3.35m)

BEDROOM FOUR

9'10" x 7'1" (3.00m x 2.16m)

BEDROOM FIVE

11' x 6'11" (3.35m x 2.11m)

BATHROOM

8'4" x 7' (2.54m x 2.13m)

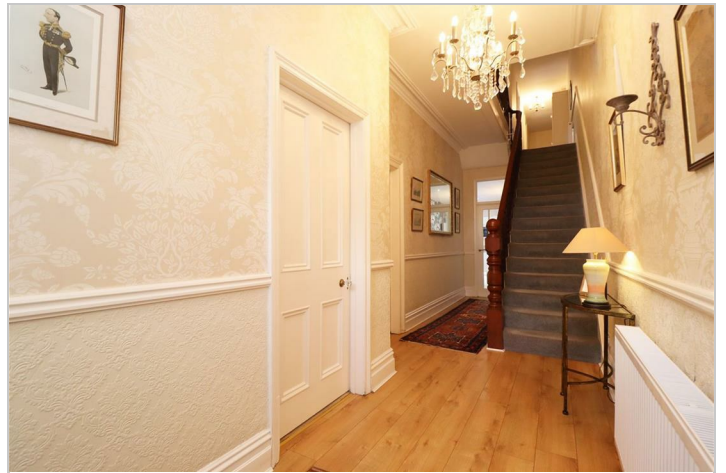
SHOWER ROOM

3'10" x 3'8" (1.17m x 1.12m)

W.C

7'2" x 3'6" (2.18m x 1.07m)

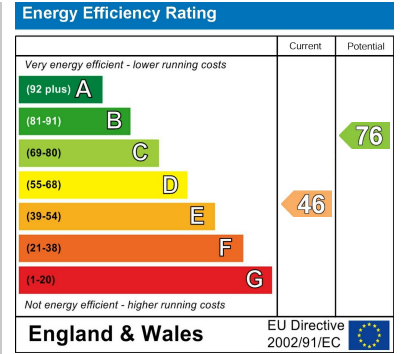




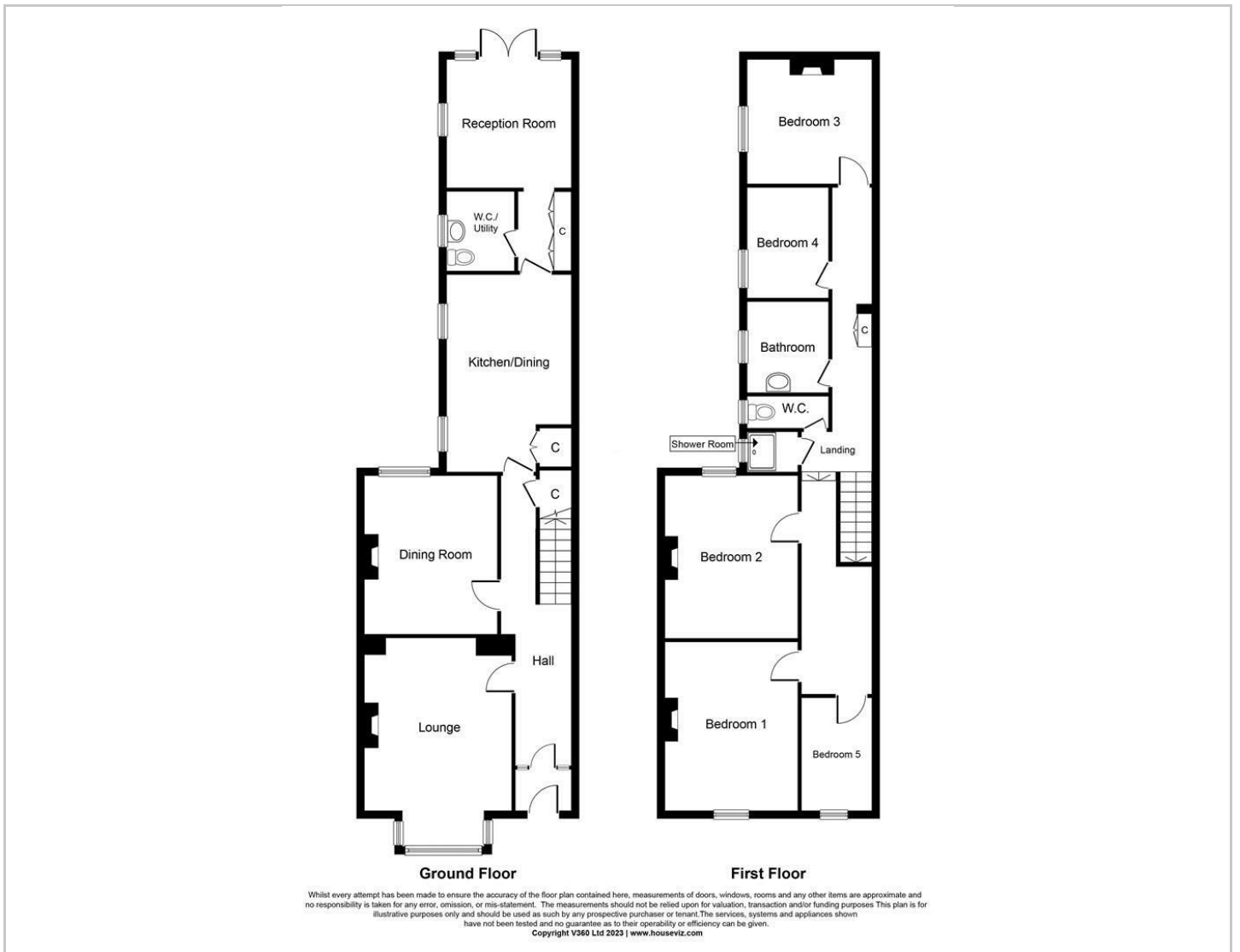
Map



EPC graph



Floor Plan



VIEWING

Please contact us on 01642 248248 if you wish to arrange a viewing or would like more information.

These particulars, whilst believed to be accurate are set out as a general outline only for guidance and do not constitute any part of an offer or contract. Intending purchasers should not rely on them as statements of representation of fact, but must satisfy themselves by inspection or otherwise as to their accuracy. No person in this firm's employment has the authority to make or give any representation or warranty in respect of the property.