



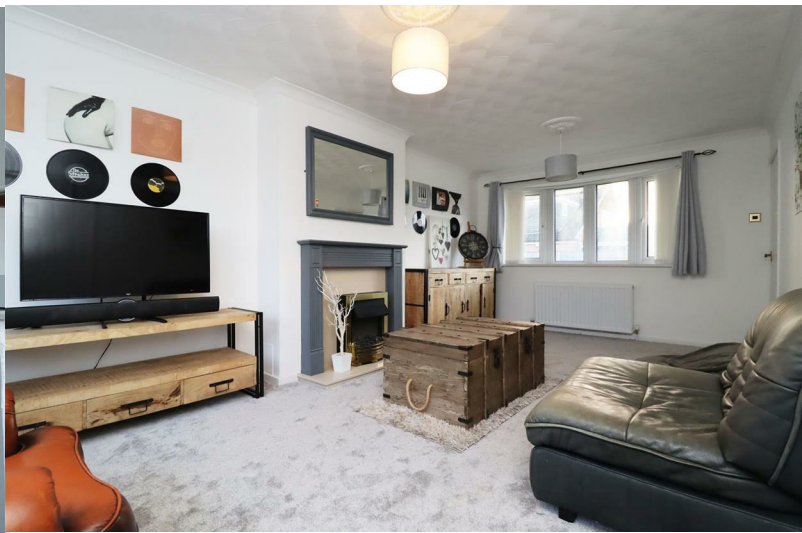
Lichfield Avenue, Eaglescliffe, Stockton-On-Tees, TS16 0NL

Semi detached dormer style house situated on the popular Orchard Estate in Eaglescliffe. The property is conveniently positioned within easy access to a local shopping parade and a Tesco supermarket. Yarm High Street is within walking distance with its excellent selection of cafes, bars, shops and restaurants along with highly regarded Primary and Secondary schooling.

For commuting Allens West train station is close by and the A66 with good transport links is also easily accessible. Ground floor accommodation has a spacious feel and comprises, large lounge with windows to the front and rear aspects, modern kitchen/dining room fitted with a good range of base and wall units incorporating integrated oven and hob, storage cupboard, and an access door leading to the side. Completing the ground floor is a shower room/wc. Located on the first floor are two double bedrooms.

Externally there is ample space available for parking on the long driveway which leads to the single garage, and there are gardens to the front and rear. Contact Gowland White to arrange a viewing.

Asking Price £160,000



ENTRANCE HALL

SHOWER ROOM/WC
6'6" x 5'4" (1.98 x 1.63)

LOUNGE
19'10" x 11'11" (6.05 x 3.63)

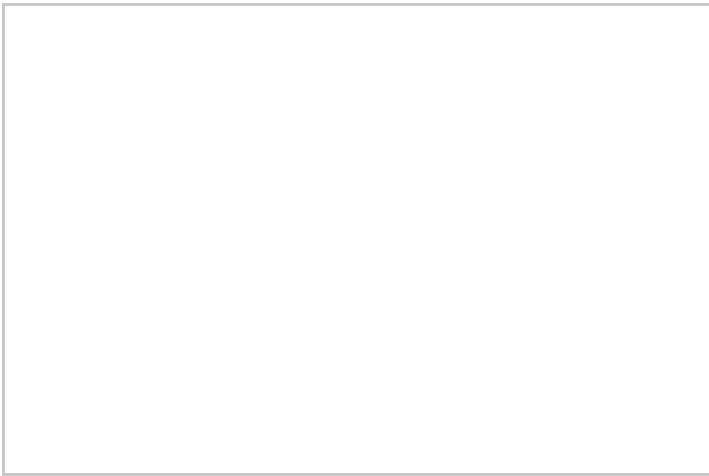
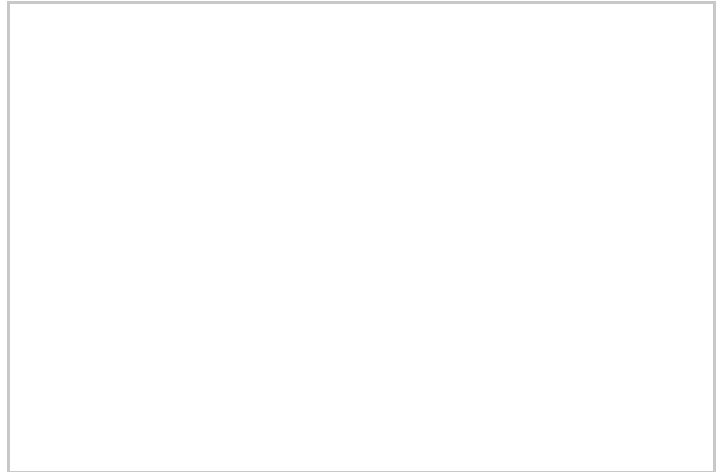
KITCHEN/DINING

FIRST FLOOR LANDING

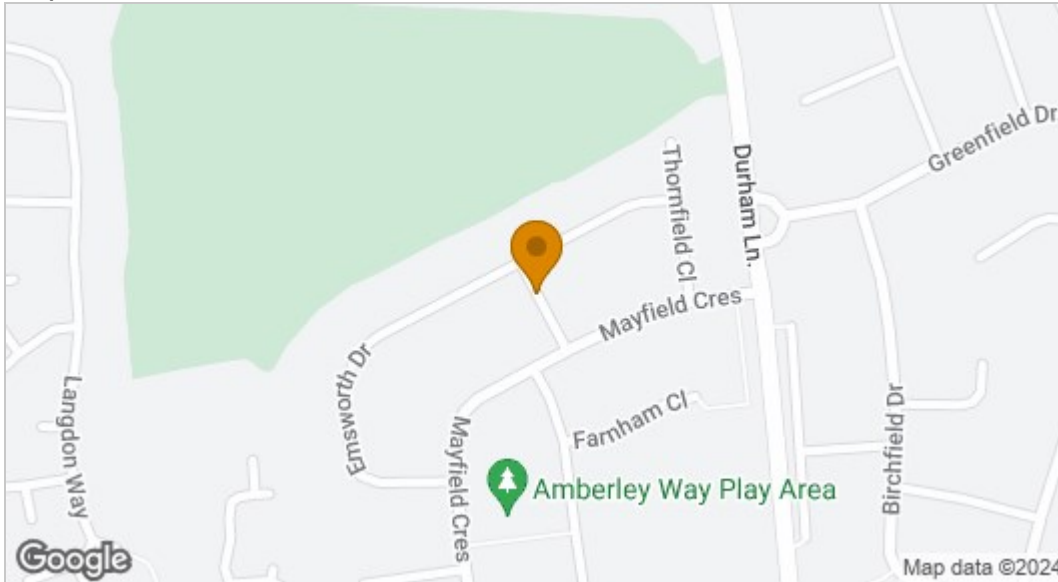
BEDROOM ONE
13'11" x 11'1" (4.24 x 3.38)

BEDROOM TWO
10'10" x 8'5" (3.30 x 2.57)

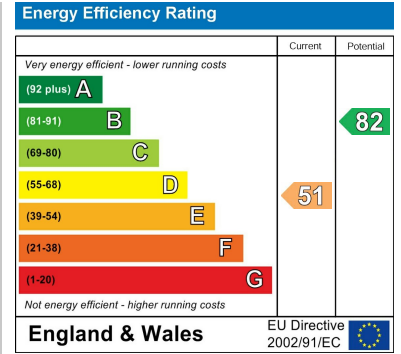




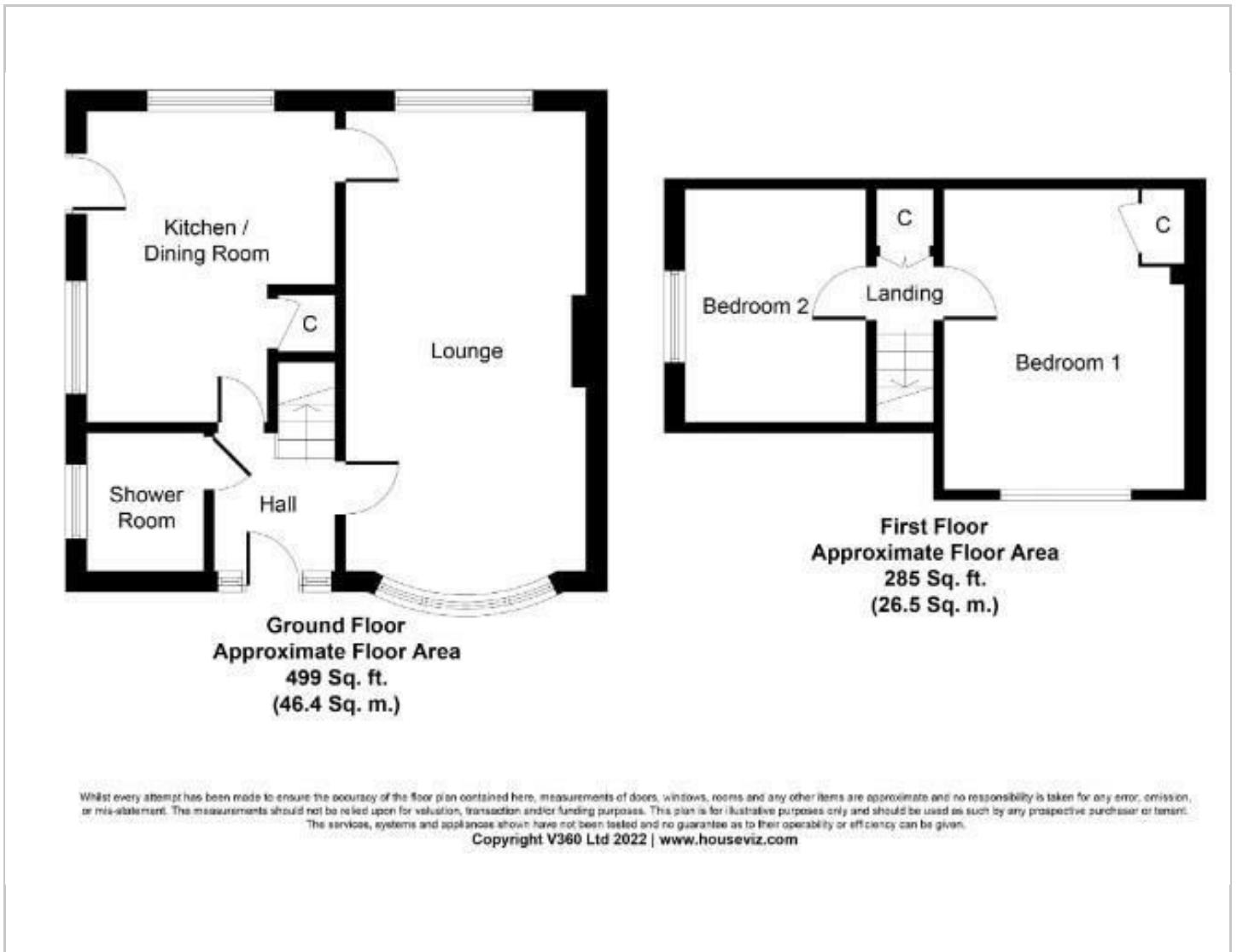
Map



EPC graph



Floor Plan



VIEWING

Please contact us on 01642 248248 if you wish to arrange a viewing or would like more information.

These particulars, whilst believed to be accurate are set out as a general outline only for guidance and do not constitute any part of an offer or contract. Intending purchasers should not rely on them as statements of representation of fact, but must satisfy themselves by inspection or otherwise as to their accuracy. No person in this firm's employment has the authority to make or give any representation or warranty in respect of the property.