



**GASCOIGNE  
HALMAN**

HESKETH AVENUE, DIDSBURY

---

THE AREAS LEADING ESTATE AGENT



## HESKETH AVENUE, DIDSBURY

**£845,000**

A rare opportunity to acquire this unique four bedroom detached property occupying a secluded position in the heart of Didsbury village. Offering a healthy 2122 sq ft the property offers superb accommodation over two floors and is accessed via a private road. Reception hall, four/five bedrooms, bay fronted open plan living/dining room, office/study, dining room, reception/bedroom, conservatory, comprehensive designer kitchen, two shower rooms and a main family bathroom.



There is easy access to Didsbury Village catering for everyday requirements where there is a wide range of restaurants, bars and shopping facilities. For the commuter Manchester City Centre lies approximately five miles away and is readily accessible via means of frequent bus services routed along either Barlow Moor Road or Wilmslow Road (A5145). Access to the National Motorway Network is also nearby and the property is within the catchment area of reputable schools.



This individually designed four/five bedroom detached residence offers the highest standards of accommodation and fittings throughout and occupies a highly secluded position within the heart of Didsbury village. Accessed via a private drive providing ample off road parking.

Internally the property comprises:- entrance porch leading to a welcoming reception hallway, bay fronted large living/dining room with french door leading to the conservatory with solid Canadian maple wood flooring and exposed Cheshire brick, a 17ft modern fitted kitchen, light and airy bay fronted double bedroom with access to a Jack and Jill shower room, office/study and an additional reception/extra bedroom completes the ground floor.

To the first floor there are two delightful double bedrooms with the master benefiting from dual aspect windows and a contemporary en suite shower room. There is a modern fitted family bathroom with a Jacuzzi style bath which serves the two other bedrooms.

The property is accessed down a private road within a stone's throw from Didsbury village, off road parking for multiple vehicles to the front, and a secure gate provides access to the secluded rear garden with an attractive decked area and fenced boundaries.

#### **DIRECTIONS**

M20 2QW

#### **LIVING ROOM**

5,66m(18'7") into bay x 3,53m(11'7")

#### **DINING ROOM**

3,84m(12'7") x 3,51m(11'6")

#### **KITCHEN**

12'7 (3,84m) x 17'7 (5,36m)

#### **BEDROOM 1**

18'10 (5,74m) x 11'6 (3,51m)

#### **BEDROOM 2**

18'5 (5,61m) x 9'1 (2,77m)

#### **BEDROOM 3**

19'2 (5,84m) into bay x 9'1 (2,77m)

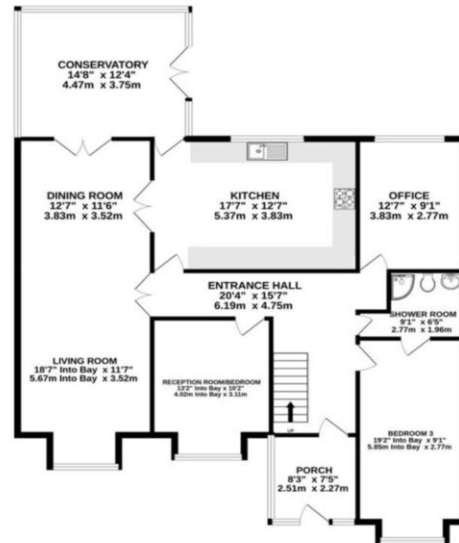
#### **BEDROOM 4**

8'2 (2,49m) x 9'10 (3m)

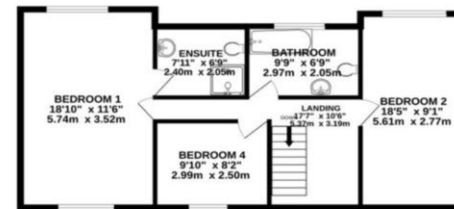
#### **BATHROOM**

6'9 (2,06m) x 9'9 (2,97m)

GROUND FLOOR  
1434 sq.ft. (133.2 sq.m.) approx.



1ST FLOOR  
688 sq.ft. (63.9 sq.m.) approx.



TOTAL FLOOR AREA : 2122 sq.ft. (197.1 sq.m.) approx.  
Measurements are approximate. Not to scale. Illustrative purposes only  
Made with Metropax 62023

NOTICE Gascoigne Halman for themselves and for the vendors or lessors of this property whose agents they are give notice that: (i) the particulars are set out as a general outline only for the guidance of intending purchasers or lessees, and do not constitute, nor constitute part of, an offer or contract; (ii) all descriptions, dimensions, references to condition and necessary permissions for use and occupation, and other details are given in good faith and are believed to be correct but any intending purchasers or tenants should not rely on them as statements or representations of fact but must satisfy themselves by inspection or otherwise as to the correctness of each of them; (iii) no person in the employment of Gascoigne Halman has any authority to make or give any representation or warranty whatever in relation to this property.

## DIDSBURY OFFICE

0161 445 7474

didsbury@gascoignealman.co.uk

Elm House, 739 Didsbury Road, Manchester, M20 6RN

**GASCOIGNE  
HALMAN**