





## Donnington Park, Donnington, Newbury RG14 2EP

£600,000

3 2 2

- Donnington Park estate
- Substantial three double bedroomed home
- Two large reception rooms
- Kitchen/breakfast room
- Downstairs cloakroom
- Master bedroom en-suite
- Lovely outlook to the rear
- West facing garden
- Single garage and driveway parking
- No Onward Chain parking

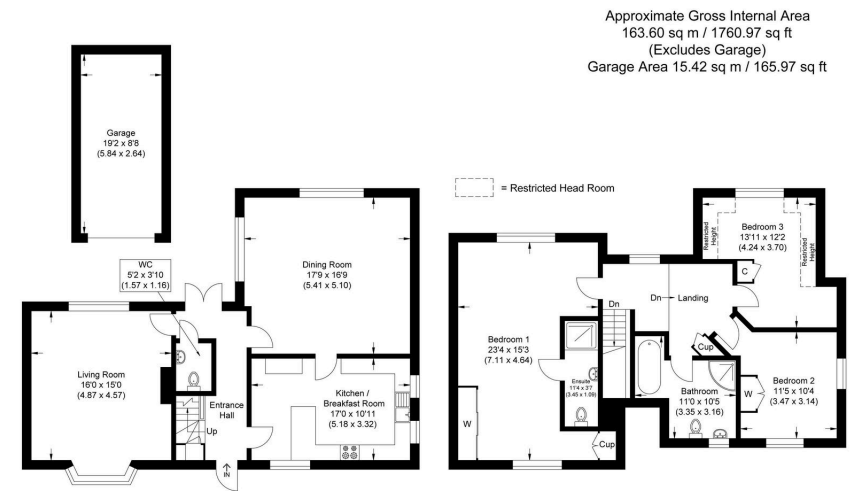


Full of charm and character, this spacious and substantial three double bedroom end of terrace forms part of an Edwardian country house and is located on the prestigious Donnington Park Estate to the north west of Newbury. With its pretty and well planted garden overlooking the parkland, the internal accommodation includes entrance hall, cloakroom, kitchen/breakfast room, dual aspect sitting room with feature fire place, dual aspect and super sized dining room on the ground floor. Upstairs the spacious landing leads to a large main bedroom fitted wardrobes and an en-suite shower room, there are two further double bedrooms and a bathroom with separate shower cubicle. Outside the west facing paved terrace leads to a lawned area with pretty and mature shrub borders, summer house and a single garage in a stable block of four with parking to front. No Onward Chain.





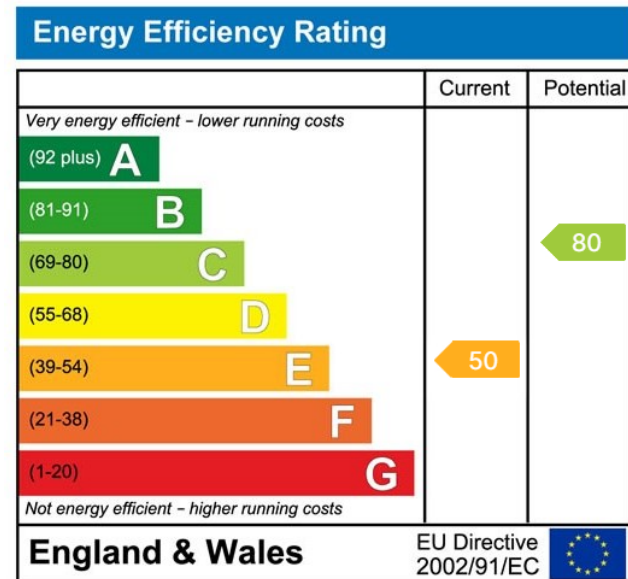




Ground Floor

First Floor

Illustration for identification purposes only, measurements are approximate, not to scale.



☎ 01635 523777 (Sales)

☎ 01635 523880 (Lettings)

🌐 [www.downer.co.uk](http://www.downer.co.uk)

DOWNER & CO Estate Agents, 44 Cheap Street Newbury, Berkshire RG14 5BX