

## St Johns Court, Old Newtown Road, Newbury, RG14 7DP

Guide Price £225,000

 2  1  1



- Ground floor maisonette
- Living/dining room
- Walk to town and rail station
- Own entrance
- No onward chain
- Two bedrooms
- Spacious accommodation
- Off-road allocated parking
- Share of freehold
- Lease 82 years. Service Charge £480 per annum. No ground rent share of freehold.

Approximate Gross Internal Area  
65.49 sq m / 704.92 sq ft

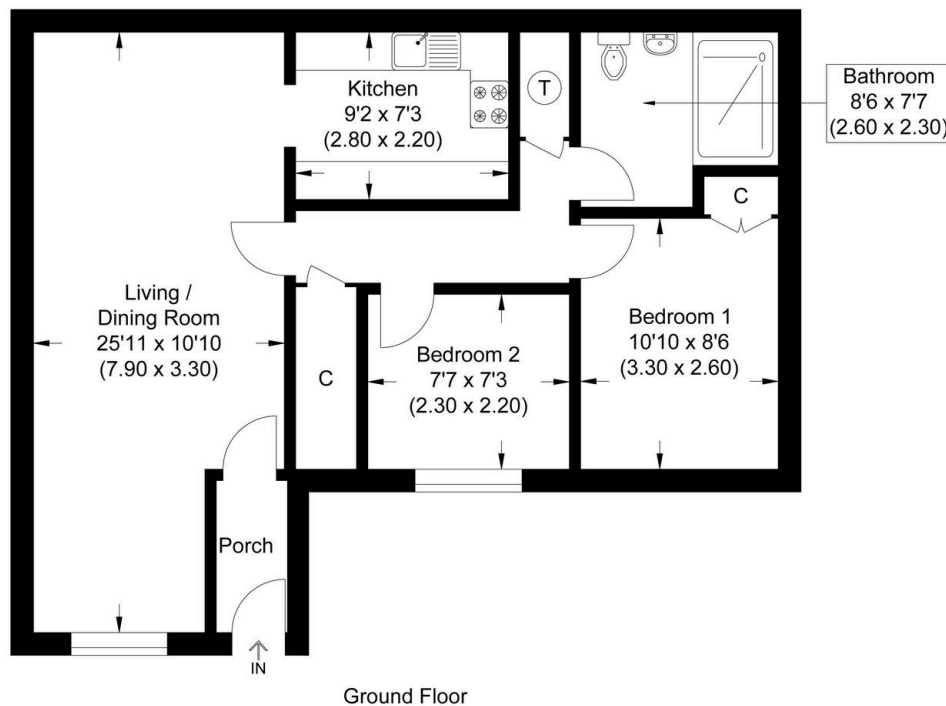


Illustration for identification purposes only, measurements are approximate, not to scale.

Two bedroom ground floor maisonette ideal for any first time buyers or investors, located within walking distance of the town centre and rail station. The property offers spacious living accommodation and comprises of own entrance, porch, large living/dining room, kitchen, two bedrooms and generous shower room. Benefits include off-road allocated parking, share of freehold and NO ONWARD CHAIN. Viewings highly recommended.

EPC D.

