



Kempton Close, Newbury, RG14 7RS

£500,000

4 1 2

- Detached house
- Four bedrooms
- Corner plot garden
- L-shape open plan living/
dining room
- Wood burner
- Kitchen/breakfast room
- Utility and downstairs
cloakroom
- Garage with double width
driveway to front
- Walk to town and train
station
- No Onward Chain

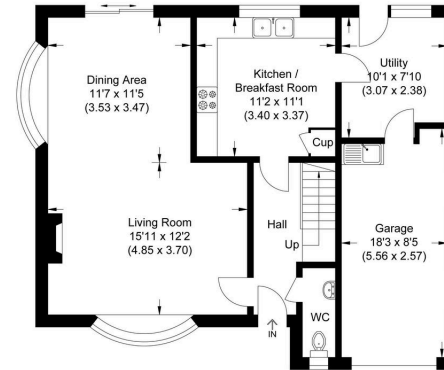


Offered with No Onward Chain, a pristinely presented four bedroom detached house with a stunning corner plot garden. Located on the old racecourse development in a quiet close, this lovely home is within walking distance to the train station and town centre beyond while Stroud Green, The Racecourse and Greenham Common are all within a few minutes walk. Having one careful owner for the last forty years, the house has been well looked after and the accommodation includes entrance hall, cloakroom, triple aspect and L-shaped living/ dining room with fitted wood burner and patio door to the garden, kitchen/breakfast room, utility room, four bedrooms, family bathroom, lovely wrap around garden with summerhouse and various sitting areas, large wood store, garage and double width driveway to front with additional hard standing area to the rear.

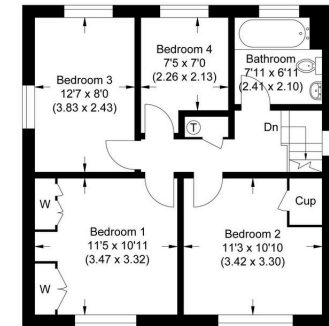




Approximate Gross Internal Area
125.91 sq m / 1355.28 sq ft
(Includes Garage)
Garage Area : 13.77 sq m / 148.21 sq ft



Ground Floor




First Floor

Illustration for identification purposes only, measurements are approximate, not to scale.



Energy Efficiency Rating

	Current	Potential
Very energy efficient - lower running costs		
(92 plus) A		
(81-91) B		
(69-80) C		75
(55-68) D	68	
(39-54) E		
(21-38) F		
(1-20) G		
Not energy efficient - higher running costs		
England & Wales		EU Directive 2002/91/EC 

☎ 01635 523777 (Sales)

☎ 01635 523880 (Lettings)

🌐 www.downer.co.uk

DOWNER & CO Estate Agents, 44 Cheap Street Newbury, Berkshire RG14 5BX