



47 Newbury Road, Kingsclere RG20 5SP

£450,000

🛏 3 🚿 1 🚗 2

- Village location
- Beautifully cared for and extended home
- Spacious living room & kitchen/diner
- Downstairs cloakroom and utility
- Double garage plus further garage and parking
- Walk to all village amenities
- Three bedrooms
- Character features including wood burner
- Stunning 100ft west facing rear garden



A lot larger than it looks!! A superbly presented and extended three bedroom period home arranged over three floors in this very pretty village. The property has been lovingly cared for and recently updated by the current vendors to include a wood burner and brand new sash style double glazing and benefits from a stunning west facing rear garden and triple garaging with driveway parking at the rear.

The accommodation includes entrance hall, spacious living room with wood burner, extended kitchen/dining room 2x roof lanterns, utility room, cloakroom, two first floor double bedrooms, smart refitted family bathroom with separate walk-in shower, loft conversion providing third bedroom, approx 100ft beautiful west facing rear garden, double garage plus further single garage and driveway parking.

EPC Rating to follow.



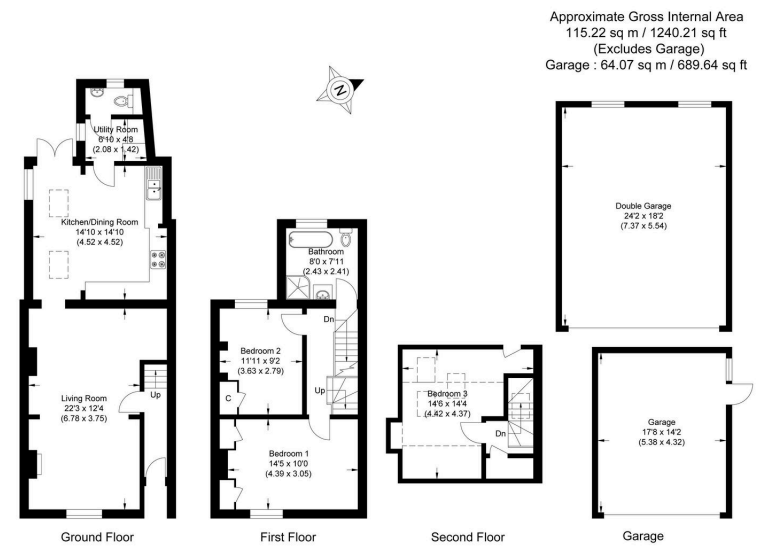


Illustration for identification purposes only, measurements are approximate, not to scale.



☎ 01635 523777 (Sales)

☎ 01635 523880 (Lettings)

🌐 www.downer.co.uk

DOWNER & CO Estate Agents, 44 Cheap Street Newbury, Berkshire RG14 5BX