





## 25 Stretcher Drive, Hermitage, Thatcham, RG18 9WQ

Fixed Price £435,000

🛏 3 🍳 2 🛋 2

- Semi detached
- Beautifully presented
- Close to local shops
- Large private rear garden
- Conservatory
- Three bedrooms
- Popular village location
- Downs school catchment
- Cloakroom
- Study area



Beautifully presented three bedroom semi-detached home, situated on the popular Forest Edge development, in the sought after village of Hermitage and within the Downs school catchment.

The accommodation comprises entrance hall, cloakroom, kitchen with integrated appliances and breakfast bar, living/ dining room, conservatory, study, (part of garage conversion), master bedroom with en-suite shower room, two further bedrooms and family bathroom.

Benefits include integral garage space for storage, driveway parking, larger than average rear garden and gas central heating. Viewings highly recommended.







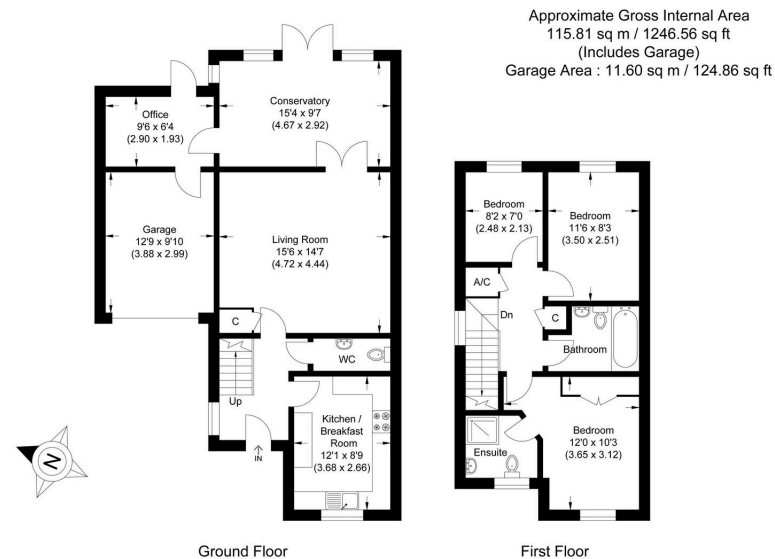
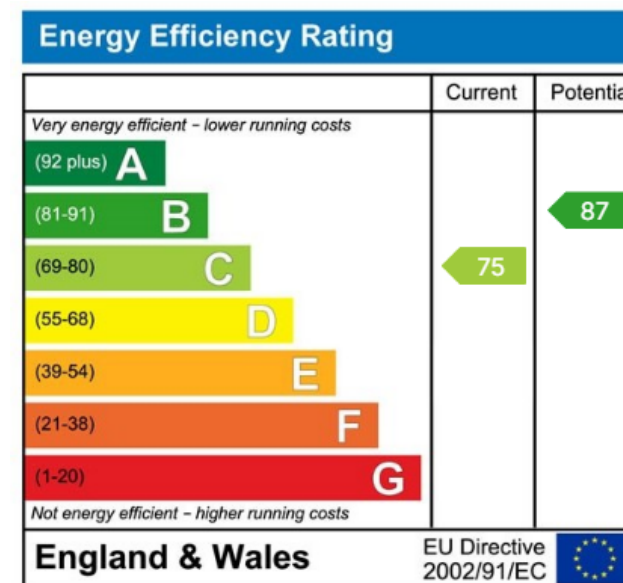


Illustration for identification purposes only, measurements are approximate, not to scale.



☎ 01635 523777 (Sales)

☎ 01635 523880 (Lettings)

🌐 [www.downer.co.uk](http://www.downer.co.uk)

DOWNER & CO Estate Agents, 44 Cheap Street Newbury, Berkshire RG14 5BX