



51 Boundary Road, Newbury, RG14 5RR

£295,000

🛏 2 🚿 1 🛋 2

- NO ONWARD CHAIN
- Two double bedrooms
- Cloakroom
- Spacious and light
- Sunny west facing garden and patio
- Kitchen/breakfast room
- Large open plan living/dining area
- Upvc double glazing
- Gas fired central heating
- Walk to town centre, rail station, canal and Stroud Green



NO ONWARD CHAIN. This two double bedroom property is located within just a few minutes walk of the town centre and mainline rails station. This large property is also within easy reach of the canal path and Stroud Green.

The light and airy accommodation consists of entrance hall, cloakroom, open plan living/dining room, smart kitchen/breakfast room, two double bedrooms and family bathroom.

Outside, the garden and patio face west so it gets plenty of afternoon sun and there is gate leading to a path back to the road. The property also has upvc double glazing and gas-fired central heating.



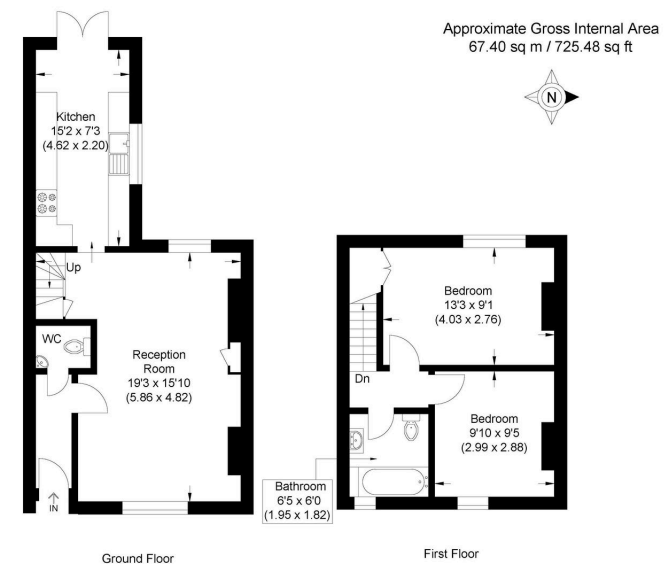
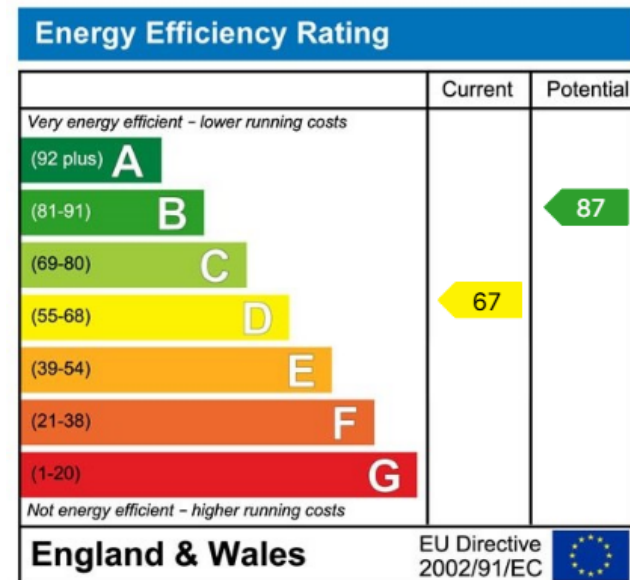


Illustration for identification purposes only, measurements are approximate, not to scale.



☎ 01635 523777 (Sales)

☎ 01635 523880 (Lettings)

🌐 www.downer.co.uk

DOWNER & CO Estate Agents, 44 Cheap Street Newbury, Berkshire RG14 5BX