



27 George Street, Kingsclere, RG20 5NH

£425,000

🛏 3 🚿 1 🛋 2

- Very popular village
- Character home
- Three bedrooms over three floors
- Wood burner in living room
- Private rear garden with wooden gazebo
- Walk to all village amenities
- Much improved by present vendors
- Spacious living/dining room
- Character features throughout



A beautifully presented three bedroom character home close to the heart of this lovely village. With character features throughout and much improved by the present vendors this stunning cottage is also within walking distance to all the amenities the village has to offer.

The accommodation arranged over three floors includes large open plan living/dining room with wood burner and central staircase, kitchen which leads out to the rear garden, two first floor bedrooms, family bathroom and dressing room /study with second staircase to a loft conversion providing a further bedroom.

The rear garden offers a degree of privacy, has a storage shed and beautifully crafted wooden gazebo ideal for outdoor entertaining. There is on street parking available close-by on a free for all basis.



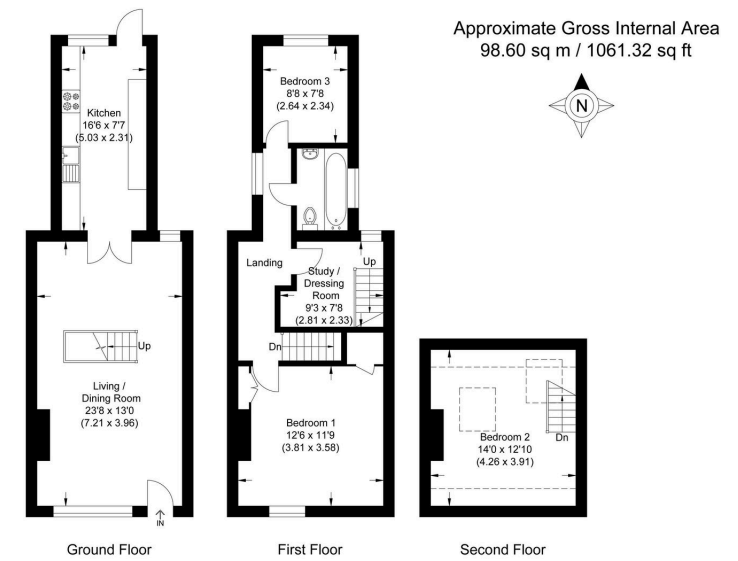
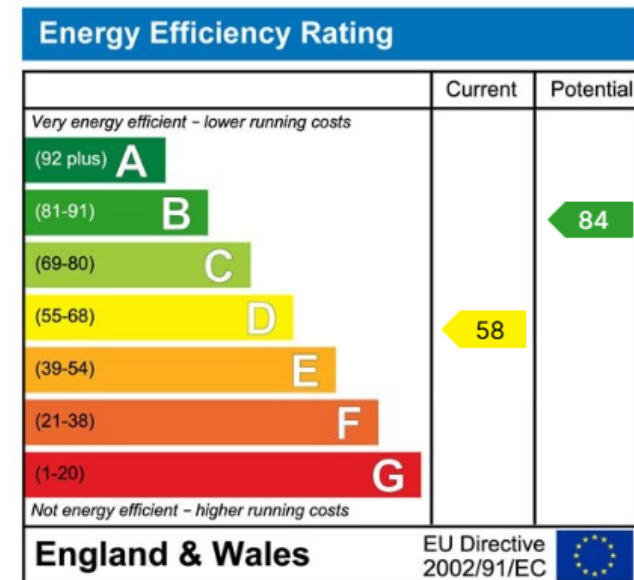


Illustration for identification purposes only, measurements are approximate, not to scale.



☎ 01635 523777 (Sales)

☎ 01635 523880 (Lettings)

🌐 [www.downer.co.uk](http://www.downer.co.uk)

DOWNER & CO Estate Agents, 44 Cheap Street Newbury, Berkshire RG14 5BX