





## Beech Court, Victoria Gardens, Newbury, RG14 1EY

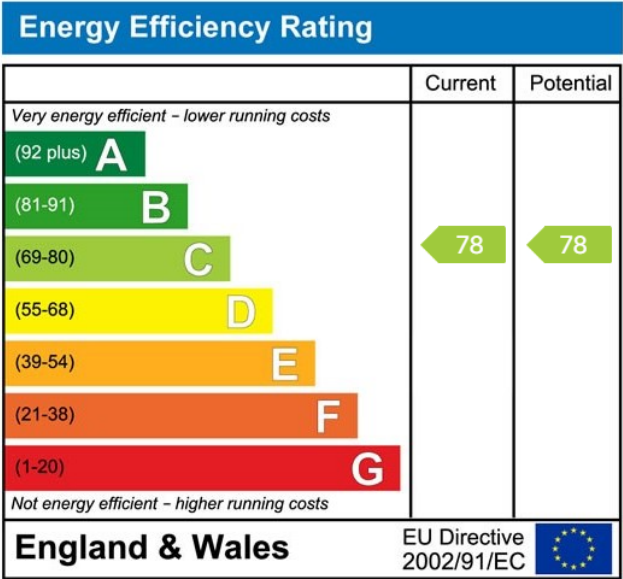
Guide Price £155,000

🛏 1 🍽 1 🛋 1



- One bedroom
- Living/dining room
- Walk to town/ rail station
- No onward chain
- Top floor apartment
- Share of freehold and lengthy lease remaining
- Allocated off-road parking
- Service charges £1200 per annum & Ground Rent £80 per annum





Ideally located in a quiet cul-de-sac, just a stone's throw from Victoria Park, all the shops, restaurants and mainline railway station is this one double bedroom top floor apartment. Offering security entry, communal hall, stairs to own entrance, hall, living/dining room, kitchen, double bedroom and bathroom. Benefits include off-road parking, share of freehold, lease extended to 2983 years from 2011, double glazing and NO ONWARD CHAIN.



Approximate Gross Internal Area  
45.94 sq m / 494.49 sq ft

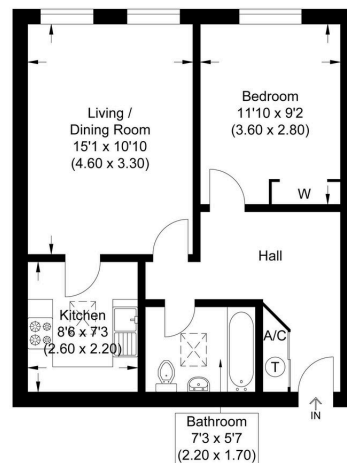
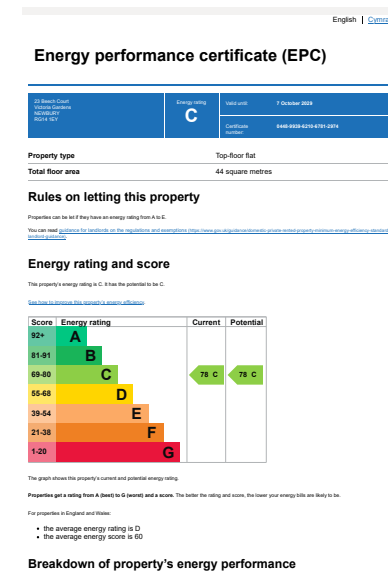


Illustration for identification purposes only, measurements are approximate, not to scale.



☎ 01635 523777 (Sales)

☎ 01635 523880 (Lettings)

🌐 [www.downer.co.uk](http://www.downer.co.uk)

DOWNER & CO Estate Agents, 44 Cheap Street Newbury, Berkshire RG14 5BX