





## 6 Hollycroft, Ashford Hill, RG19 8BU

£899,950

🛏 4 🚿 2 🛋 3

- Four double bedrooms
- Detached with double detached garage
- Spacious and light
- Quiet corner plot
- Plenty of parking
- Immaculately presented
- Beautiful gardens surround the house
- Miles of footpaths on the doorstep
- Home office
- Easy access to Kingsclere, Basingstoke and Newbury



Tucked away in a quiet corner is this immaculately presented four double bedroom home with beautiful garden that surrounds it on all sides. This property is located within a short walk of miles of local footpaths and countryside, and a local park.

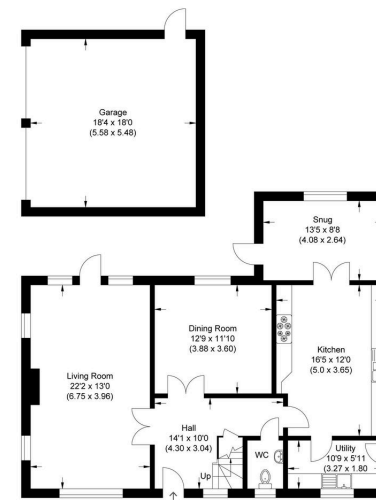
The light and spacious accommodation consists of entrance hall, kitchen/breakfast room, dining room, living room with dual aspect windows, utility, cloakroom, master bedroom with ensuite and built-in wardrobes, three further double bedrooms all with built-in wardrobes, and family bathroom.

In the garden is a fully functional home office with bi-fold doors to its own patio. The the well maintained, pretty garden surrounds the house and includes vegetable gardens to the side. There is a path to the double garage and also around both sides of the house. Driveway parking for several vehicles. EPC Rating to follow.

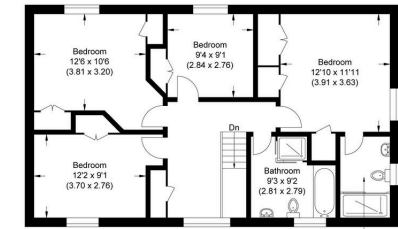




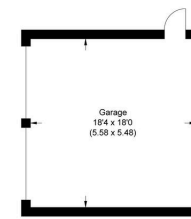




Ground Floor



First Floor



Approximate Gross Internal Area  
170.55 sq m / 1835.78 sq ft  
(Excludes Garage)  
Garage Area 30.58 sq m / 329.16 sq ft



Illustration for identification purposes only, measurements are approximate, not to scale.



☎ 01635 523777 (Sales)

☎ 01635 523880 (Lettings)

🌐 [www.downer.co.uk](http://www.downer.co.uk)

DOWNER & CO Estate Agents, 44 Cheap Street Newbury, Berkshire RG14 5BX