






10 Queens Road, Kingsclere RG20 5ES

£535,000

 4  2  3

- Village location
- Detached house
- Four bedrooms
- Master en-suite
- Downstairs cloakroom
- Three reception rooms
- Double garage and driveway parking for four vehicles
- Private corner plot rear garden
- Stunning views across the village and countryside
- No Onward Chain

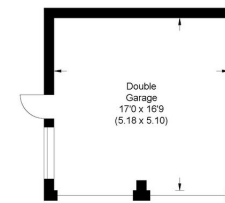


At the far end of a cul-de-sac, a four bedroom detached family home on the outskirts of this very popular village. With three reception rooms, a private corner plot garden, double detached garage and the most wonderful elevated views across the village and the surrounding countryside this home has a lot to offer.

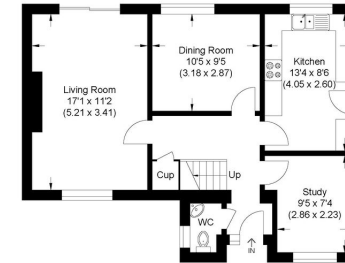
The accommodation includes entrance hall, dual aspect living room, dining room, study, kitchen, master bedroom en-suite, three further bedrooms, family bathroom, private corner plot garden with separate patio and decking area with pergola, double detached garage with driveway parking for four vehicles. No Onward Chain.

EPC Rating to follow.

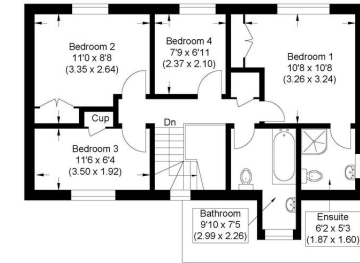




Approximate Gross Internal Area
108.01 sq m / 1162.61 sq ft
(Excludes Garage)
Garage Area 26.42 sq m / 284.36 sq ft



Ground Floor



First Floor

Illustration for identification purposes only, measurements are approximate, not to scale.



📞 01635 523777 (Sales)

📞 01635 523880 (Lettings)

🌐 www.downer.co.uk

DOWNER & CO Estate Agents, 44 Cheap Street Newbury, Berkshire RG14 5BX