

4 St Johns Court, Old Newtown Road, Newbury, RG14 7DP

Guide Price £225,000

🛏 2 🚿 1 🚗 1



Two bedroom top floor masonry, ideal for any first time buyers or investors, located within walking distance of the town centre and rail station.

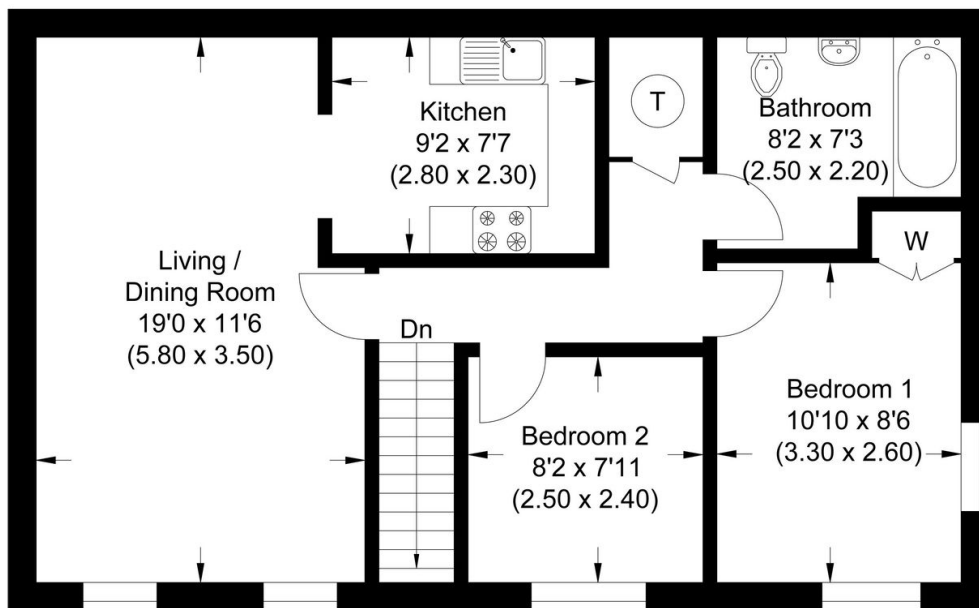
The property offers spacious living accommodation and comprises of own entrance, stairs to first floor, large living/dining room, kitchen, two good size bedrooms and generous bathroom.

Benefits include off-road allocated parking, share of freehold and NO ONWARD CHAIN. Viewings highly recommended. EPC Rating D.

Key Features

- Top floor maisonette
- Living/dining room
- Walk to town and rail station
- Own self contained entrance
- No onward chain
- Two bedrooms
- Spacious accommodation
- Off road allocated parking
- Share of freehold
- Lease 82 Years (to 1/1/2107). Service Charge: £480 per annum. No Ground Rent as share of freehold

Approximate Gross Internal Area
57.13 sq m / 614.94 sq ft



First Floor

Illustration for identification purposes only, measurements are approximate, not to scale.