



## 2 Apus House, Francis Close, Thatcham, RG18 3GQ

£215,000

🛏 2 🚿 1 🚗 1

- Ground floor maisonette
- Views over Henwick Park
- Two bedrooms both with built-in wardrobes
- L-shape open plan living room/kitchen
- Smart bathroom
- Zoned under floor heating
- Bike storage facility
- Allocated parking space
- Further parking for visitors on free-for-all basis
- Very low service charge



Ideal invest or first time buy. Presented in a cool contemporary design and highly eco-efficient, a two bedroom ground floor maisonette with views across Henwick Park.

Apus House is on a small modern development built circa 2017 on the western fringes of Thatcham and the accommodation includes open plan L-shaped living room/ kitchen with built-in appliances, two bedrooms both with built-in wardrobes and smart bathroom. Outside there is a communal bin store, bicycle storage and allocated parking for the maisonette with additional parking spaces for visitors on a free-for-all basis.

### Lease Details and Outgoings

992 years remaining on the lease

Service Charge £52 per month/ £624 per annum.

Ground Rent £350 per annum



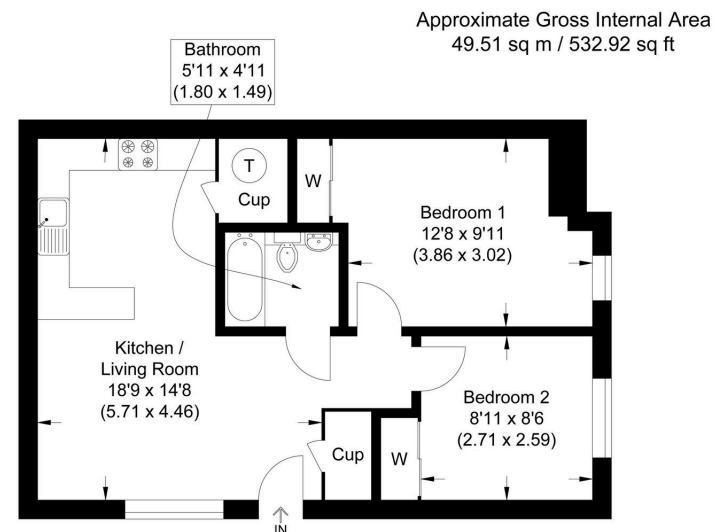
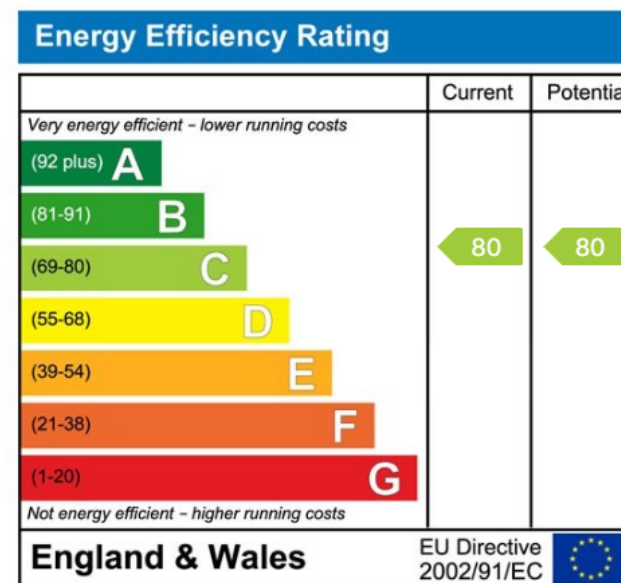


Illustration for identification purposes only, measurements are approximate, not to scale.



☎ 01635 523777 (Sales)

☎ 01635 523880 (Lettings)

🌐 [www.downer.co.uk](http://www.downer.co.uk)

DOWNER & CO Estate Agents, 44 Cheap Street Newbury, Berkshire RG14 5BX