





## Yates Copse, Newbury, RG14 2SB

£615,000

🛏 4 🚿 2 🛋 2

- NO ONWARD CHAIN
- Four bedrooms
- Ensuite to master
- Kitchen/breakfast room
- Dining room
- Large corner plot with potential to extend (stpp)
- South-west facing garden
- Quiet cul-de-sac
- Double detached garage
- Utility and cloakroom



NO ONWARD CHAIN. Beautifully presented and maintained four bedroom detached family home with double detached garage located just to the north of Newbury in a quiet cul-de-sac. The property sits on a large corner plot with potential to extend (stpp) and the garden faces south-west providing plenty of sun light. On the doorstep there are miles of footpaths and the mainline rail stations of Newbury Racecourse, Newbury and Thatcham are nearby. The light and spacious accommodation consists of entrance hall, kitchen/breakfast room, dining room, living room with dual-aspect windows, utility room, cloakroom, master bedroom with ensuite, two further double bedrooms, fourth bedroom and family bathroom. Benefits include upvc double glazing, gas-fired central heating, and driveway parking in front of the double garage.







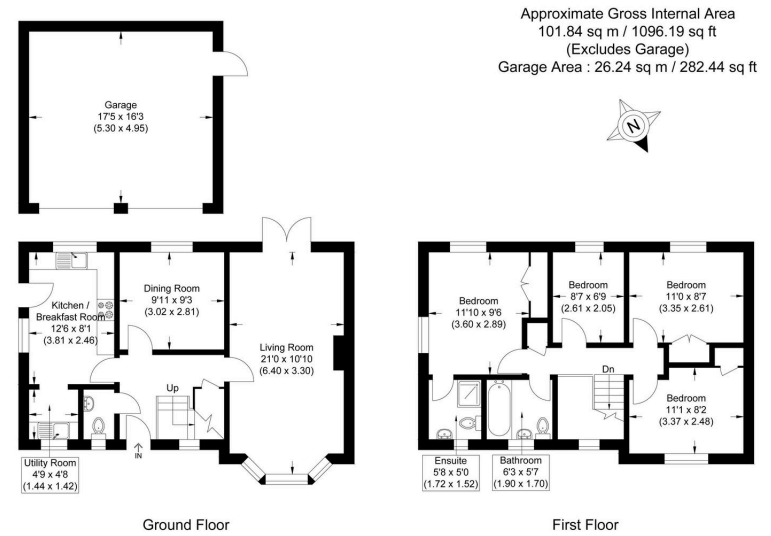
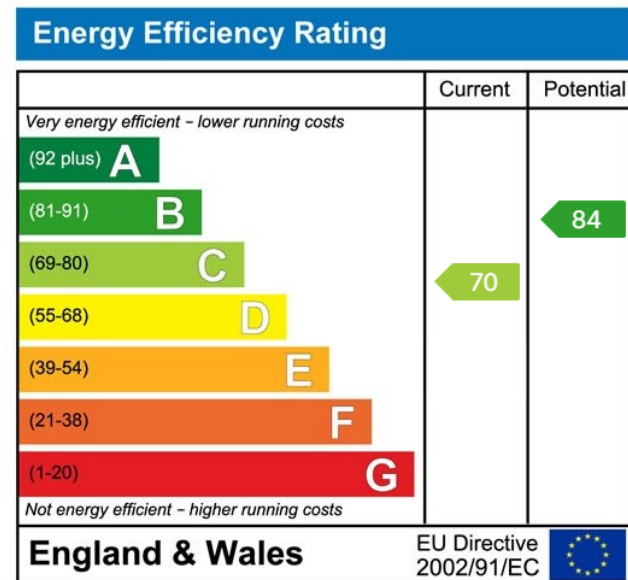


Illustration for identification purposes only, measurements are approximate, not to scale.



☎ 01635 523777 (Sales)

☎ 01635 523880 (Lettings)

🌐 [www.downer.co.uk](http://www.downer.co.uk)

DOWNER & CO Estate Agents, 44 Cheap Street Newbury, Berkshire RG14 5BX