





## 10 Laundry Court, Northway, Newbury, RG14 7FL

Guide Price £190,000

🛏 2 🚿 1 🛋 1

- NO ONWARD CHAIN
- Two double bedrooms
- Short walk to town centre, rail station, Stroud Green, racecourse
- Small block
- Allocated parking
- Light and spacious
- Newly redecorated and carpeted
- Juliette balcony
- Upvc double glazed
- Service Charge: £1300 per annum. Ground rent: £150 per annum. Years remaining on the lease: 103.



NO ONWARD CHAIN. Brilliantly located within a short walk of the town centre, mainline rail station, Stroud Green and the racecourse, this smart second floor two double bedroom flat is situated in a small block and comes with an allocated parking space.

The light and spacious accommodation has just been redecorated and recarpeted throughout and consists of communal security entry system, stairs to second floor, personal front door to hall, open plan kitchen/dining/living room with south facing Juliette balcony, good sized main bedroom with built-in wardrobes, second double bedroom and family bathroom.

Benefits include additional storage in the loft space, upvc double glazing and electric heating.









Approximate Gross Internal Area  
60.32 sq m / 649.27 sq ft

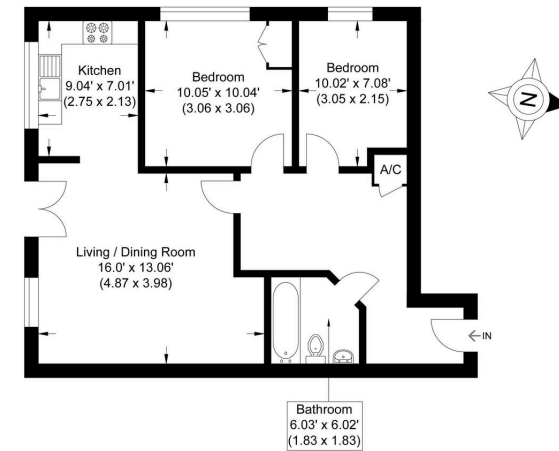
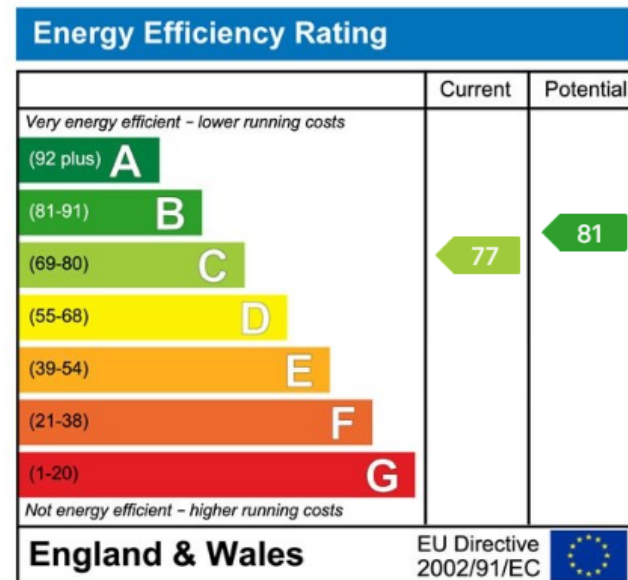


Illustration for identification purposes only, measurements are approximate, not to scale.



☎ 01635 523777 (Sales)

☎ 01635 523880 (Lettings)

🌐 [www.downer.co.uk](http://www.downer.co.uk)

DOWNER & CO Estate Agents, 44 Cheap Street Newbury, Berkshire RG14 5BX