

21 Fletton Link, Hermitage, Thatcham, RG18 9WR

Part Buy Part Rent £147,500

🛏️ 2 🚿 1 🚗 1



A great opportunity to own a 50% share of this two bedroom mid terrace house located in the popular village of Hermitage. Within walking distance of the local shops, public house and primary school.

Accommodation comprises entrance hall, cloakroom, kitchen, good size lounge/dining room with French doors opening to the rear garden, double bedroom, further generous size bedroom and bathroom. Benefits also include off road parking, pretty rear garden, gas central heating, 133 years lease remaining and double glazing throughout. No ONWARD CHAIN

EPC Rating C

Key Features

- Popular village
- Gas central heating
- Cloakroom
- Two bedrooms
- 50% share/50% rented
- Easy A34/M4 access
- No onward chain
- Large living/dining room
- Mid terraced
-

21 Fletton Link

Approximate Gross Internal Area = 61.3 sq m / 660 sq ft

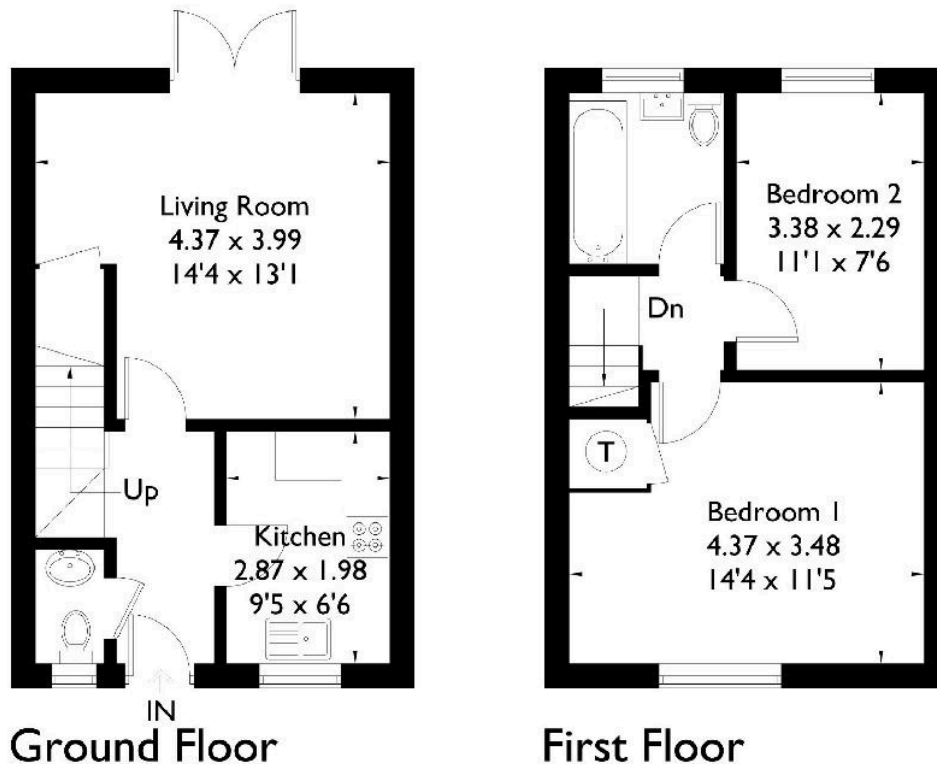


Illustration for identification purposes only. Not to scale
Ref: 151810