



6 Leys Gardens, Newbury, RG14 1HX

£625,000

🛏️ 4 🚿 2 🛋️ 3

- NO ONWARD CHAIN
- Well presented, light and spacious
- Ensuite and balcony to master bedroom
- Quiet cul-de-sac
- Smart kitchen/breakfast room
- Four bedrooms
- Detached
- West-facing garden
- Town centre
- Driveway parking room



NO ONWARD CHAIN. Brilliantly located in the town centre is this well presented, light and spacious four bedroom detached home. The property is at the end of a small cul-de-sac and is within a short walk of the High Street, Northcroft Park and not far from the mainline rail station to London Paddington.

The accommodation consists of entrance hall, smart kitchen/breakfast room, dining room, living room, cloakroom, large utility room/converted garage, master bedroom with ensuite and balcony, two further double bedrooms, fourth bedroom and family bathroom.

Benefits include upvc double glazing, gas-fired central heating and driveway parking.



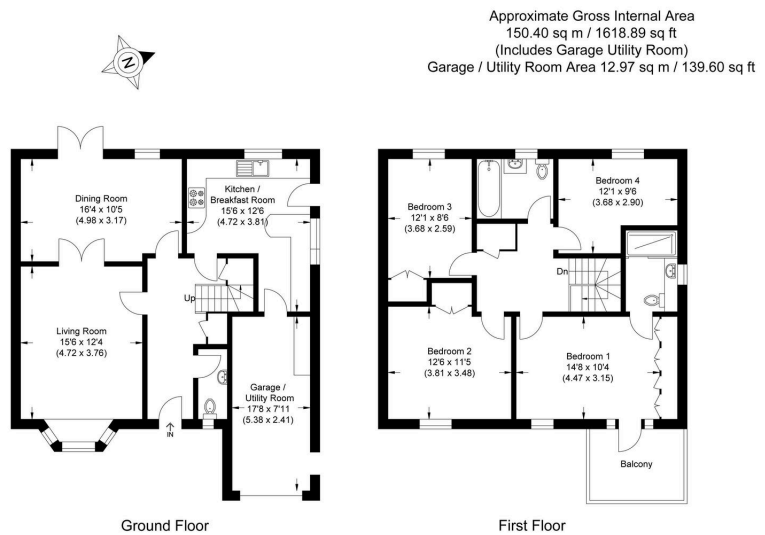
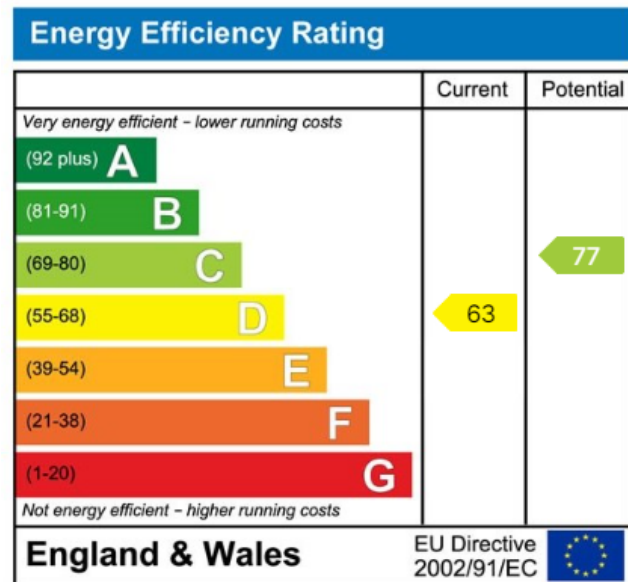


Illustration for identification purposes only, measurements are approximate, not to scale.



☎ 01635 523777 (Sales)

☎ 01635 523880 (Lettings)

🌐 www.downer.co.uk