






DOWNER & CO

TRUSTED SINCE 1988

Rosemount, Worlds End, Beedon, Newbury, Berkshire RG20 8SB

£615,000

 4  2  4

- Semi rural location
- Four double bedrooms
- Four reception rooms
- West facing rear garden
- Ideal location for A34/M4
- Detached house
- Master bedroom en-suite
- Utility room and downstairs cloakroom
- Garage and driveway for several vehicles
- No Onward Chain

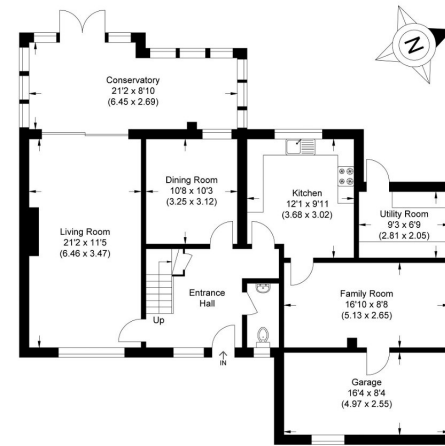


A larger than it looks four, double bedroom detached house with a west facing garden backing onto open farmland.

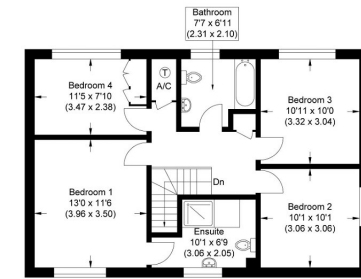
The property has four good sized reception rooms so offers very flexible and spacious accommodation including entrance hall, cloakroom, large dual aspect living room, dining room, family room/ study, kitchen, conservatory, utility room, master bedroom en-suite, three further double bedrooms, family bathroom, decent sized 100ft west facing rear garden, garage with driveway parking for several cars.

No Onward Chain.





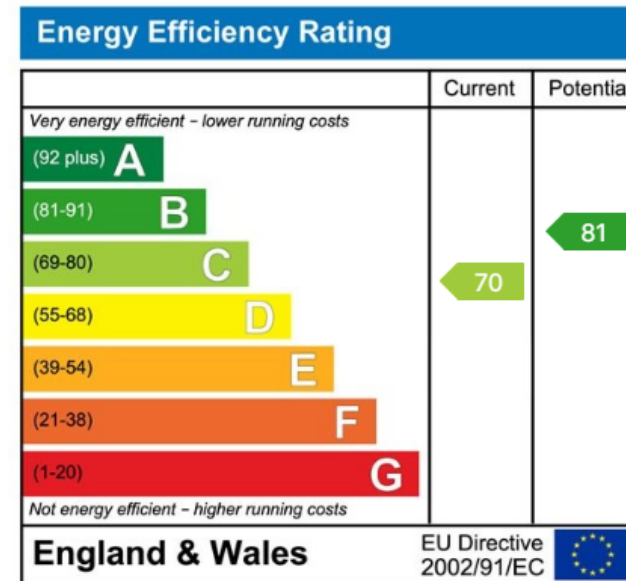
Ground Floor



First Floor

Approximate Gross Internal Area
162.05 sq m / 1744.29 sq ft
(Excludes Garage)
Garage Area : 13.08 sq m / 140.79 sq ft

Illustration for identification purposes only, measurements are approximate, not to scale.



☎ 01635 523777 (Sales)

☎ 01635 523880 (Lettings)

🌐 www.downer.co.uk