



6 Tomlin Close, Thatcham, RG19 3XY

£500,000

🛏️ 4 🚿 2 🚗 3

- Four bedrooms
- End of quiet cul-de-sac
- Two bathrooms
- Immaculate inside and out
- Light and spacious
- Detached
- Walk to local school, town centre, rail station
- Extended
- Pretty, enclosed rear garden
- Garage and driveway parking

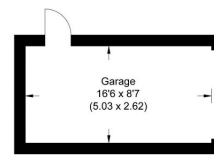


ONWARD CHAIN COMPLETE. Located at the end of a quiet cul-de-sac within walking distance of the town centre is this extremely well presented four bedroom detached home. The property has been meticulously maintained and improved by the current owners to produce a spacious and comfortable property. Locally there is a preschool, parks and the mainline rail station is only about a mile away.

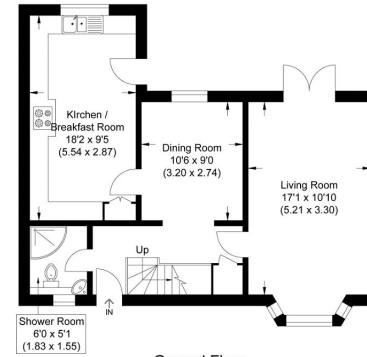
The spacious accommodation consists of entrance hall, kitchen/breakfast room, dining room, living room with dual aspect windows, bathroom to the ground floor, master bedroom, two further double bedrooms, fourth bedroom and family bathroom.

Benefits include very pretty enclosed rear garden, greenhouse, summer house, single garage with driveway parking, gas-fired central heating, and double glazing.

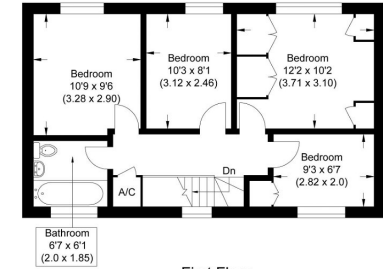




Approximate Gross Internal Area
103.61 sq m / 1115.24 sq ft
(Excludes Garage)
Garage Area 13.18 sq m / 141.86 sq ft

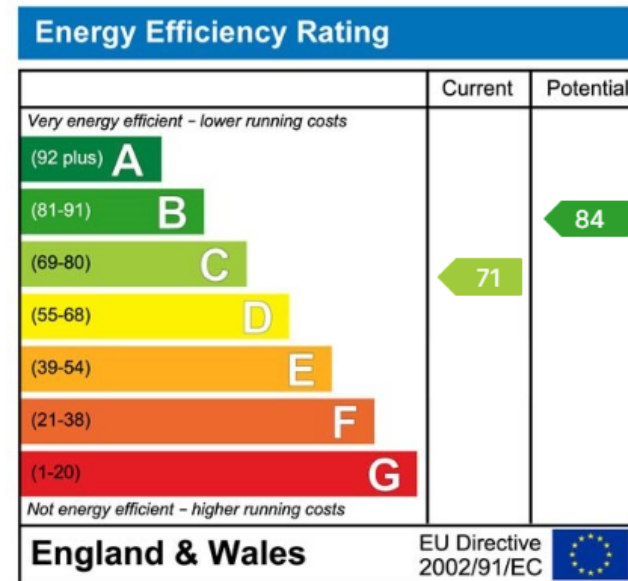


Ground Floor



First Floor

Illustration for identification purposes only, measurements are approximate, not to scale.



☎ 01635 523777 (Sales)

☎ 01635 523880 (Lettings)

🌐 www.downer.co.uk

DOWNER & CO Estate Agents, 44 Cheap Street Newbury, Berkshire RG14 5BX