



Farm View, Ashford Hill, Thatcham, Berkshire, RG19 8AX

Guide Price £699,950

🛏️ 4 🚿 3 🚗 3

- Detached
- Master bedroom with en-suite shower room
- Three further reception
- Uninterrupted countryside views
- No onward chain
- Four double bedrooms
- Large kitchen/breakfast room
- Updating required with potential to add value
- Double garage



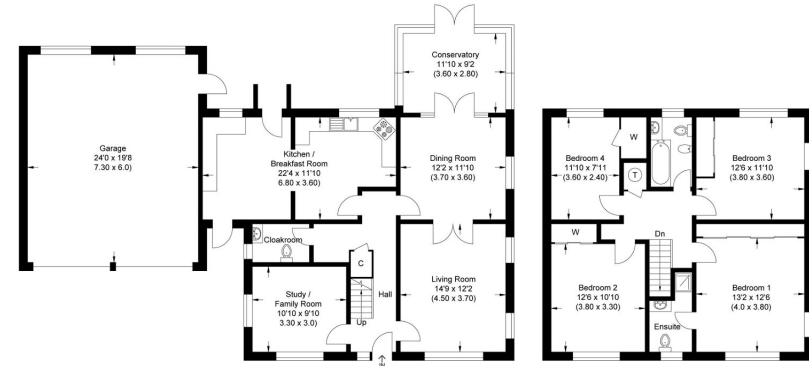
An amazing opportunity to purchase this first time to market, spacious four double bedroom detached family home, situated in an idyllic and enviable position down a quiet lane with uninterrupted countryside views.

The property is in need of updating and could make the perfect forever home! The accommodation comprises entrance hall, cloakroom, living room, kitchen/breakfast room, dining room, study/family room, conservatory, master bedroom with en-suite shower room, three further double bedrooms and family bathroom. Benefits also include a double garage, calor gas central heating and **NO ONWARD CHAIN**. Viewings by appointment and highly recommended.





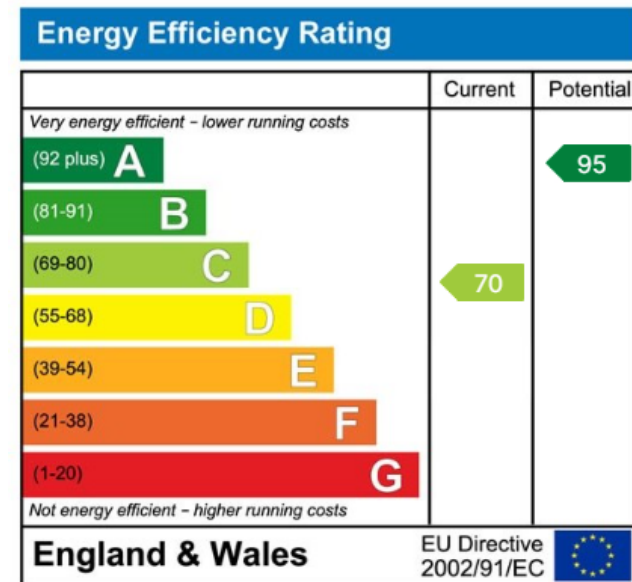
Approximate Gross Internal Area
 208.11 sq m / 2240.07 sq ft
 (Includes Garage)
 Garage Area 43.80 sq m / 471.45 sq ft



Ground Floor

First Floor

Illustration for identification purposes only, measurements are approximate, not to scale.



☎ 01635 523777 (Sales)

☎ 01635 523880 (Lettings)

🌐 www.downer.co.uk