





# Bussock Maine Cottage, Snelsmore, Newbury, RG14 3BP

£525,000

🛏️ 2 🚿 2 🛋️ 2

- No onward chain
- Stunning views of surrounding countryside
- Two bathrooms
- Plenty of driveway parking
- Well presented
- Pretty two double bedroom cottage
- Just four miles from Newbury
- Mature garden
- Lots of character
- Open plan kitchen/dining room



**NO ONWARD CHAIN.** Extremely pretty detached two double bedroom UN LISTED thatched cottage with far reaching views located just to the north of Snelsmore Common Country Park.

This well presented property sits in the middle of it's plot and is surrounded by beautiful gardens that take full advantage of the views. The accommodation consists of triple aspect kitchen/ dining room, double aspect living room, rear lobby, downstairs shower room and utility, two double bedrooms and family bathroom.

Outside there is a lovely established garden laid mainly to lawn with various seating areas, and driveway parking for several vehicles. Benefits include upvc double glazing and oil fired central heating.

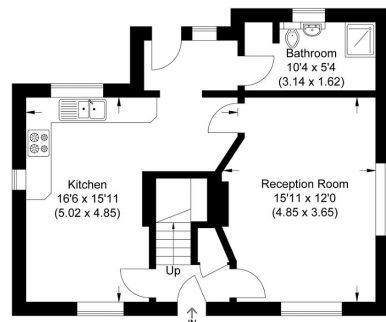




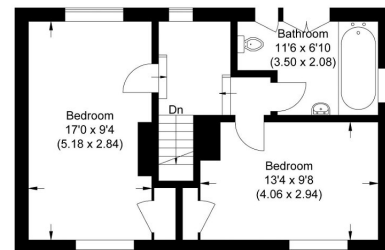




Approximate Gross Internal Area  
91.92 sq m / 989.41 sq ft



Ground Floor



First Floor

Illustration for identification purposes only, measurements are approximate, not to scale.



Score	Energy rating	Current	Potential
92+	A		
81-91	B		81 B
69-80	C		
55-68	D		
39-54	E	42 E	
21-38	F		
1-20	G		

☎ 01635 523777 (Sales)

☎ 01635 523880 (Lettings)

🌐 [www.downer.co.uk](http://www.downer.co.uk)