

## Flat 4, 16 Craven Road, Newbury RG14 5NE

£152,500

🛏 1 🚿 1 🚗 1



A characterful top floor one bedroom apartment in a converted period terrace located within a few minutes walk of the train station and town centre. The apartment has undergone some recent refurbishment and offers a spacious layout. Accessed via an outside staircase from the private car parking area at the rear of the building the accommodation includes communal entrance hall, own hallway leading to the spacious and open plan living/dining room/kitchen, double bedroom and bathroom. There is the huge added bonus of allocated parking and the property comes with 109 years remaining on the lease.

EPC Rating F.

## Key Features

- Town centre location
- Ideal for first time buyers
- One bedroom
- Allocated parking space
- Management Charge £960 per annum
- Few minutes walk to train station
- Top floor apartment
- Open plan living/dining/kitchen
- Lease of 109 years remaining
- Ground Rent £50 per annum

Approximate Gross Internal Area  
42.04 sq m / 452.51 sq ft

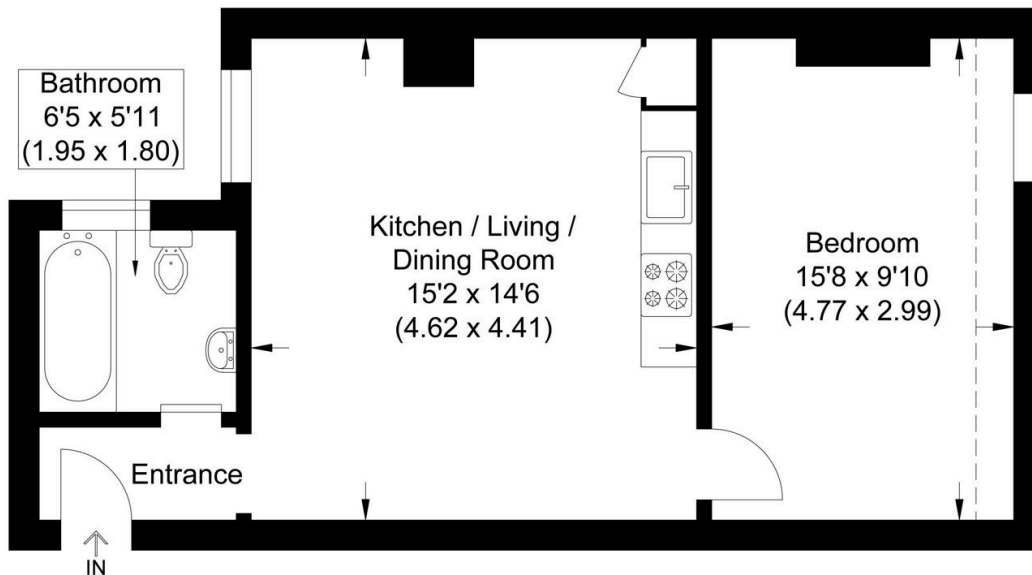


Illustration for identification purposes only, measurements are approximate, not to scale.