



High Street, East Ilsley, Newbury, RG20 7LF

Guide Price £525,000

3 1 3

- Three double bedrooms
- Attractive village location
- Three reception rooms
- Lower ground utility/storage room
- Private off-road parking space
- Characterful, Grade II Listed
- Period features maintained
- Spacious living accommodation
- Carport with large-loft space
- Private courtyard garden space



Steadman House is an attractively presented, well-proportioned, Grade II listed property in the heart of the popular village of East Ilsley, offering the perfect mix of charm and modernity. This historic house was built circa 1750 and retains many attractive period features. The accommodation briefly comprises: front vestibule, rear boot-room, large kitchen with walk-in pantry and quarry tiled floor, sitting room with inglenook fireplace, dining room with open fireplace, lower ground utility/laundry room, study/ breakfast room, master bedroom with en-suite shower, two further double bedrooms (one with vaulted ceiling) and generous size family bathroom with separate shower cubicle. Benefits also include private courtyard garden, carport with large storage room above, allocated, private courtyard parking. oil fired central heating. Good transport connections (London 45mins via train) Viewings highly recommended.



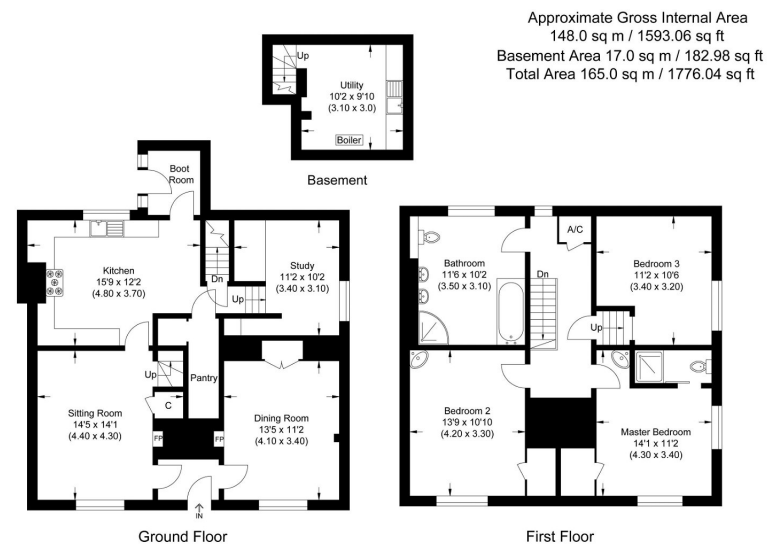
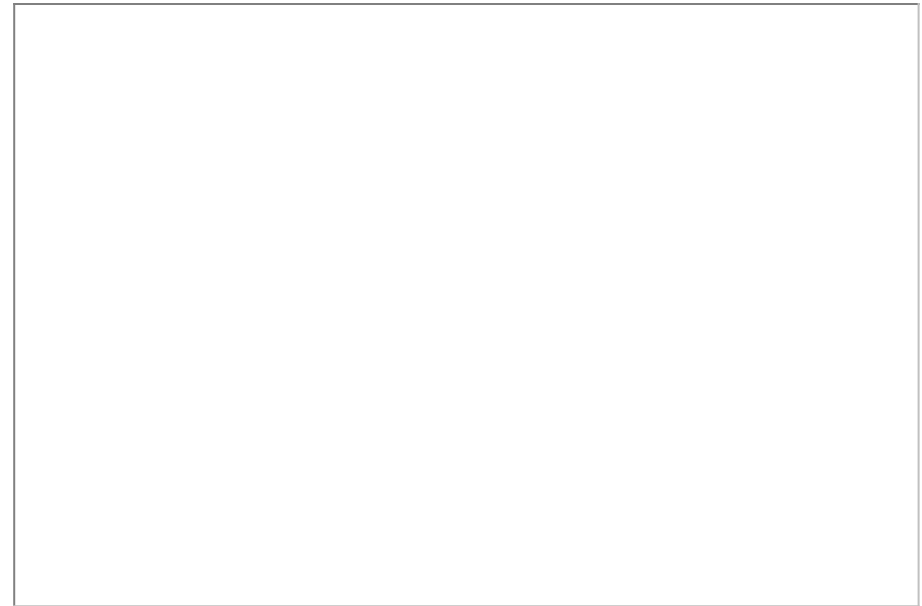


Illustration for identification purposes only, measurements are approximate, not to scale.



☎ 01635 523777 (Sales)

☎ 01635 523880 (Lettings)

🌐 www.downer.co.uk

DOWNER & CO Estate Agents, 44 Cheap Street Newbury, Berkshire RG14 5BX