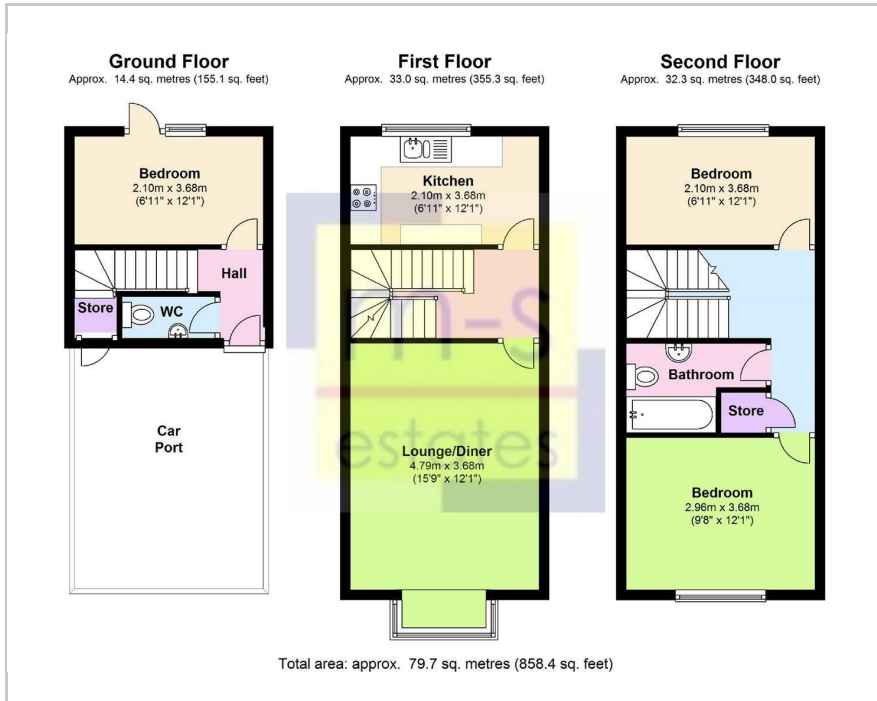




73 Lenton Manor, Nottingham, NG7 2FP  
£375 Per Week



## Floor Plan



- 3 Double bedrooms.
- 1 Bathroom & extra WC.
- Modern kitchen & bathroom.
- Well presented throughout.
- Accommodation arranged over three floors.
- Covered parking.
- Space for two cars.
- Located off Church Street in a private estate.
- Close to local amenities.
- ARLA Registered Agent.



## Area Map



### Energy Efficiency Rating

	Current	Potential
Very energy efficient - lower running costs		
(92 plus) <b>A</b>		
(81-91) <b>B</b>		<b>85</b>
(69-80) <b>C</b>	<b>72</b>	
(55-68) <b>D</b>		
(39-54) <b>E</b>		
(21-38) <b>F</b>		
(1-20) <b>G</b>		
Not energy efficient - higher running costs		
<b>England &amp; Wales</b>	EU Directive 2002/91/EC	



These particulars, whilst believed to be accurate are set out as a general outline only for guidance and do not constitute any part of an offer or contract. Intending purchasers should not rely on them as statements of representation of fact, but must satisfy themselves by inspection or otherwise as to their accuracy. No person in this firm's employment has the authority to make or give any representation or warranty in respect of the property.

3 Park Street, Derby Road, Lenton, Nottingham, NG7 1RR

Tel: 0115 9120061 Email: mail@ms-estates.co.uk www.ms-estates.co.uk