

ms  
estates

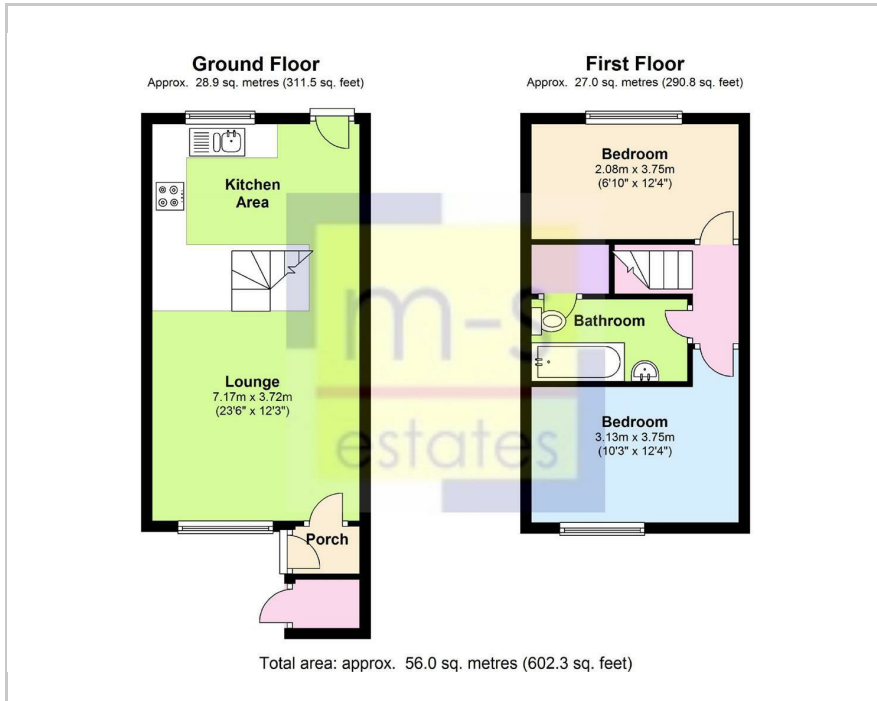


10 Grinsbrook, Nottingham, NG7 2FA  
£260 Per Week

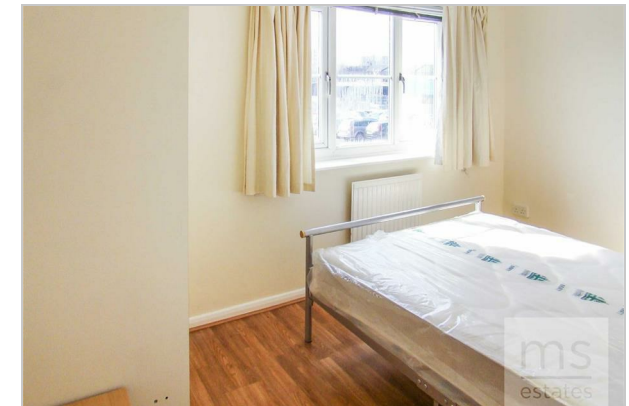


ms  
estates

## Floor Plan



- STUDENT ACCOMMODATION.
- 2 Double bedrooms.
- Well presented throughout.
- Spacious open-plan living area with fitted kitchen.
- Modern bathroom.
- Garden.
- Off-road parking.
- Quiet location.
- Intruder alarm.
- ARLA Registered Agent.



## Area Map



### Energy Efficiency Rating

	Current	Potential
<i>Very energy efficient - lower running costs</i>		
(92 plus) <b>A</b>		<b>87</b>
(81-91) <b>B</b>		
(69-80) <b>C</b>		
(55-68) <b>D</b>	<b>63</b>	
(39-54) <b>E</b>		
(21-38) <b>F</b>		
(1-20) <b>G</b>		
<i>Not energy efficient - higher running costs</i>		
<b>England &amp; Wales</b>	EU Directive 2002/91/EC	

These particulars, whilst believed to be accurate are set out as a general outline only for guidance and do not constitute any part of an offer or contract. Intending purchasers should not rely on them as statements of representation of fact, but must satisfy themselves by inspection or otherwise as to their accuracy. No person in this firm's employment has the authority to make or give any representation or warranty in respect of the property.

3 Park Street, Derby Road, Lenton, Nottingham, NG7 1RR

Tel: 0115 9120061 Email: mail@ms-estates.co.uk www.ms-estates.co.uk