



1 Forest Grove, Nottingham, NG1 4HS  
£980 Per Week

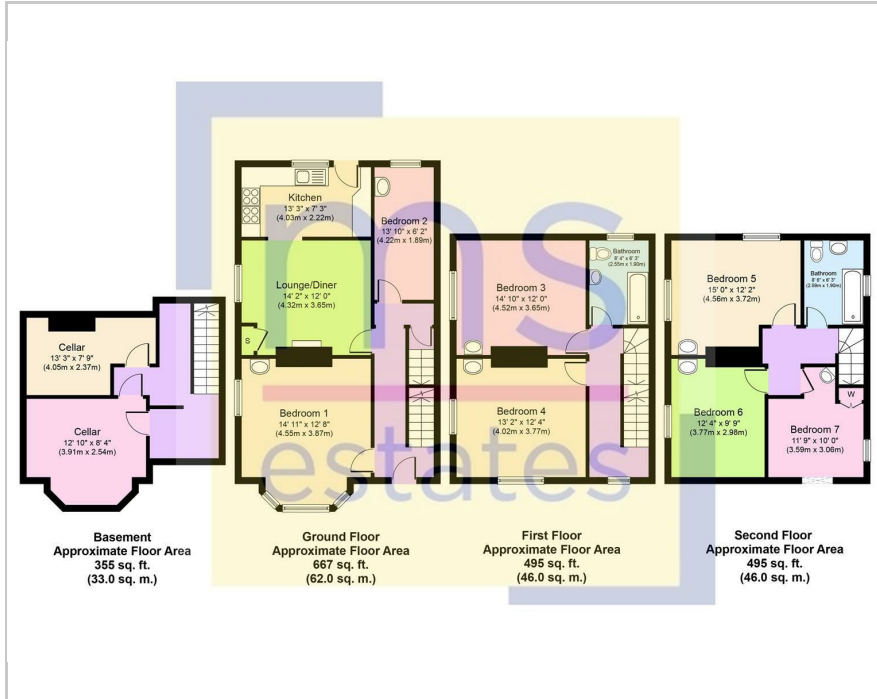


7 2 1 D

A set of four white icons on a dark background. From left to right: a bed icon with the number '7', a bathtub icon with the number '2', a sofa icon with the number '1', and a menu icon (three horizontal lines) with the letter 'D'.



## Floor Plan



## Area Map



- STUDENT ACCOMMODATION.
- Utility bills included.
- Modern kitchen.
- Separate lounge/dining area.
- Laundry room in basement.
- Televisions in bedrooms.
- Dishwasher.
- Close to NTU.
- Located in Arboretum.
- ARLA Registered Agent.

### Energy Efficiency Rating

	Current	Potential
<i>Very energy efficient - lower running costs</i>		
(92 plus) <b>A</b>		
(81-91) <b>B</b>		
(69-80) <b>C</b>		
(55-68) <b>D</b>		
(39-54) <b>E</b>		
(21-38) <b>F</b>		
(1-20) <b>G</b>		
<i>Not energy efficient - higher running costs</i>		
<b>England &amp; Wales</b>	EU Directive 2002/91/EC	<b>82</b>
		<b>64</b>



These particulars, whilst believed to be accurate are set out as a general outline only for guidance and do not constitute any part of an offer or contract. Intending purchasers should not rely on them as statements of representation of fact, but must satisfy themselves by inspection or otherwise as to their accuracy. No person in this firm's employment has the authority to make or give any representation or warranty in respect of the property.

3 Park Street, Derby Road, Lenton, Nottingham, NG7 1RR

Tel: 0115 9120061 Email: mail@ms-estates.co.uk www.ms-estates.co.uk